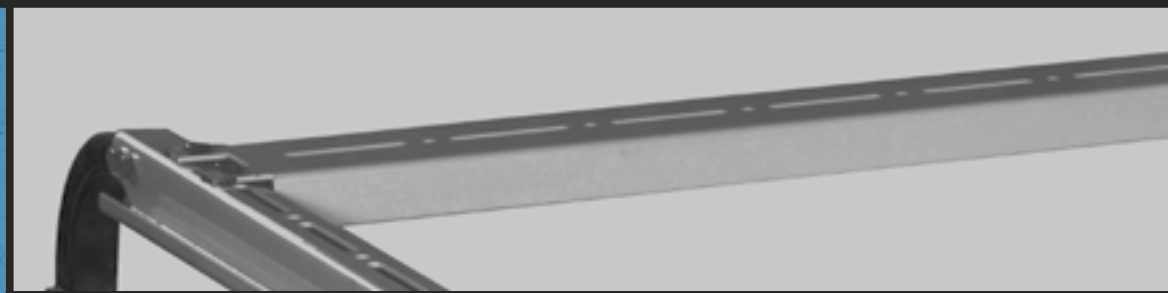
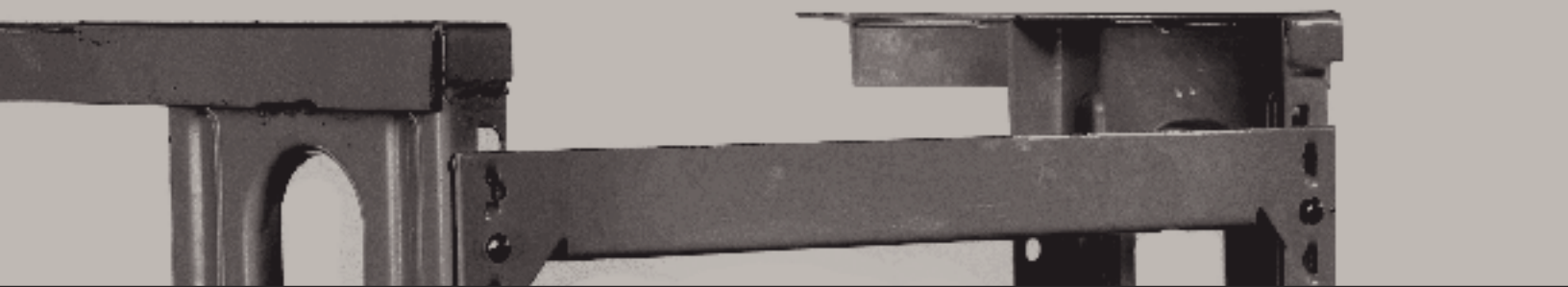


Products Catalogue



**FIREFIGHTING
FIXATION
SYSTEM**



HARMONY[®]
SUPPLIER

QUALITY
EMPOWERS
YOU.

ABOUT HARMONY

0.1

Harmony Group is the national market leader in several sheet metal products and successfully develops new types of applications for sheet metal that can be used in various fields. The privately owned company based in Giza, Egypt, develops and manufactures high specialized products for different home appliances products.

The Factory is located in the 3rd industrial zone, 6th of October, Giza, Egypt. Harmony's facility covers a manufacturing area of 2000 m² where more than 250 hard working employee get the work done. Combining decades of technical experience with modern management. Harmony is constantly expanding its business.

CERTIFICATION

CERTIFICATES

ISO 9001:2015



ISO 14001:2015



Scan this QR Code with smartphone to verify the certificate

CERTIFICATE OF REGISTRATION



This is to certify that:

HARMONY
(ALAA OSAMA MAHMOUD AND HIS PARTNERS)

PLOT 230, THIRD INDUSTRIAL ZONE,
6TH OF OCTOBER, GIZA - EGYPT

Additional Site:
1, NEW MARWA BUILDING, AHMED TAYSEER STREET,
NASR CITY, EGYPT

the management system of the above organisation has been assessed and found to comply with the requirements of the management system standards detailed below

STANDARD

ISO 14001:2015

Environmental Management System

Certification Scope

Manufacturing of All Steel and Construction and Supports for Pipes and Process Components Products and Sheet Metal Fabrication.
Design, Supply, Installation, Testing, Commissioning & After Sales Service of All Types of HVAC (Heating, Ventilation and Air-Conditioning) Systems.
Design, Supply, Installation, Testing & Commissioning of All Types of Fire-Fighting Systems.

Certification Calendar

Certificate Number IAS2612144669	Date of Registration 26-Dec-2022	Validity **Validity of this certificate is subject to successful and timely completion of the annual surveillance audit.
Client ID HA2086	Valid From 26-Dec-2022	Note¹ : Certification cycle expiry date of this certificate is - 25-Dec-2025.
Revision No. 00	Valid Until 25-Dec-2023	Note² : Surveillance 01 will be due in the month of Nov-2023 and Surveillance 02 will be due in the month of Nov-2024.

**This certificate remains the property of SAGACI and shall have to be returned back when it has ceased to be valid, for whatsoever reason.
*Information about this certificate can be inquired at the official website of certification (www.sagaciert.com)



Authorized Signatory





ACCREDITED
Management System
Certification Body
ISO/IEC

SAGACI CERTIFICATIONS PRIVATE LIMITED
www.sagaciert.com

This certificate has been issued by Sagar Certifications Pvt. Ltd., B-1, 2, Block 10, Sector 10, Gurgaon, Haryana, India. It is valid only for the activities covered by the scope of the certificate. Further clarification regarding the scope of this certificate and verification of the certificate is available through SAGACI or www.sagaciert.com.
Phone: 011-43692111, Email: info@sagaciert.com, Web: www.sagaciert.com

ISO 45001:2018



Scan this QR Code with smartphone to verify the certificate

CERTIFICATE OF REGISTRATION



This is to certify that:

HARMONY
(ALAA OSAMA MAHMOUD AND HIS PARTNERS)

PLOT 230, THIRD INDUSTRIAL ZONE,
6TH OF OCTOBER, GIZA - EGYPT

Additional Site:
1, NEW MARWA BUILDING, AHMED TAYSEER STREET,
NASR CITY, EGYPT

the management system of the above organisation has been assessed and found to comply with the requirements of the management system standards detailed below

STANDARD

ISO 45001:2018

Occupational Health & Safety Management System

Certification Scope

Manufacturing of All Steel and Construction and Supports for Pipes and Process Components Products and Sheet Metal Fabrication.
Design, Supply, Installation, Testing, Commissioning & After Sales Service of All Types of HVAC (Heating, Ventilation and Air-Conditioning) Systems.
Design, Supply, Installation, Testing & Commissioning of All Types of Fire-Fighting Systems.

Certification Calendar

Certificate Number IAS2612454470	Date of Registration 26-Dec-2022	Validity **Validity of this certificate is subject to successful and timely completion of the annual surveillance audit.
Client ID HA2086	Valid From 26-Dec-2022	Note¹ : Certification cycle expiry date of this certificate is - 25-Dec-2025.
Revision No. 00	Valid Until 25-Dec-2023	Note² : Surveillance 01 will be due in the month of Nov-2023 and Surveillance 02 will be due in the month of Nov-2024.

**This certificate remains the property of SAGACI and shall have to be returned back when it has ceased to be valid, for whatsoever reason.
*Information about this certificate can be inquired at the official website of certification (www.sagaciert.com)



Authorized Signatory





ACCREDITED
Management System
Certification Body
ISO/IEC

SAGACI CERTIFICATIONS PRIVATE LIMITED
www.sagaciert.com

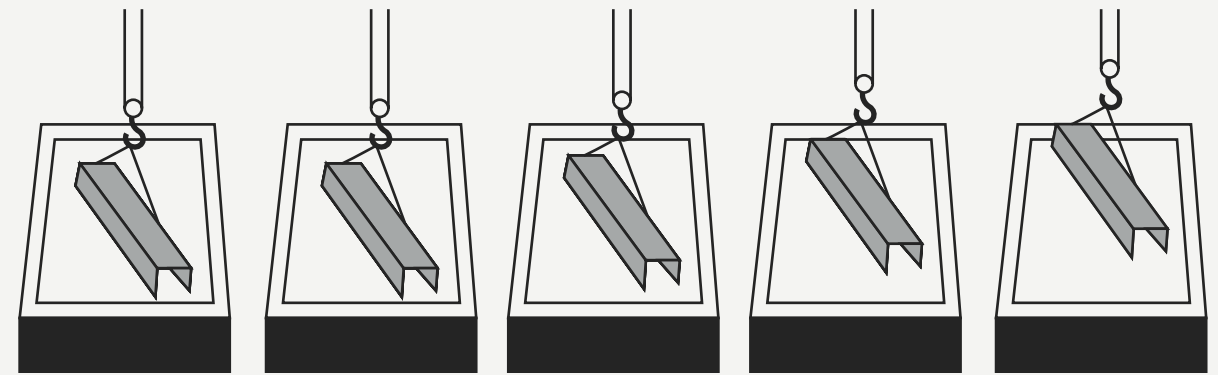
This certificate has been issued by Sagar Certifications Pvt. Ltd., B-1, 2, Block 10, Sector 10, Gurgaon, Haryana, India. It is valid only for the activities covered by the scope of the certificate. Further clarification regarding the scope of this certificate and verification of the certificate is available through SAGACI or www.sagaciert.com.
Phone: 011-43692111, Email: info@sagaciert.com, Web: www.sagaciert.com

Galvanization Methodology.

Hot-dip galvanizing is the process of immersing iron or steel in a bath of molten zinc to produce a corrosion resistant, multi-layered coating of zinc-iron alloy and zinc metal. While the steel is immersed in the zinc, a metallurgical reaction occurs between the iron in the steel and the molten zinc. This reaction is a diffusion process, so the coating forms perpendicular to all surfaces creating a uniform thickness throughout the part.

FIRST STEP

SURFACE PREPARATION



Caustic Cleaning

Rinsing

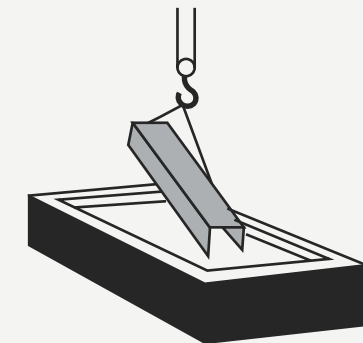
Pickling

Rinsing

Flux Solution

SECOND STEP

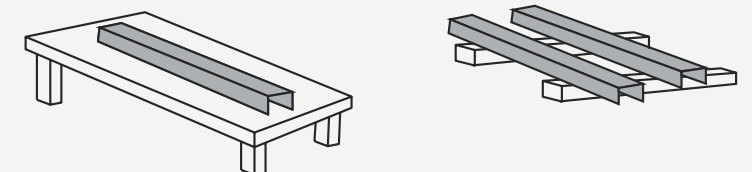
GALVANIZING Molten Zinc Bath



FINAL STEP

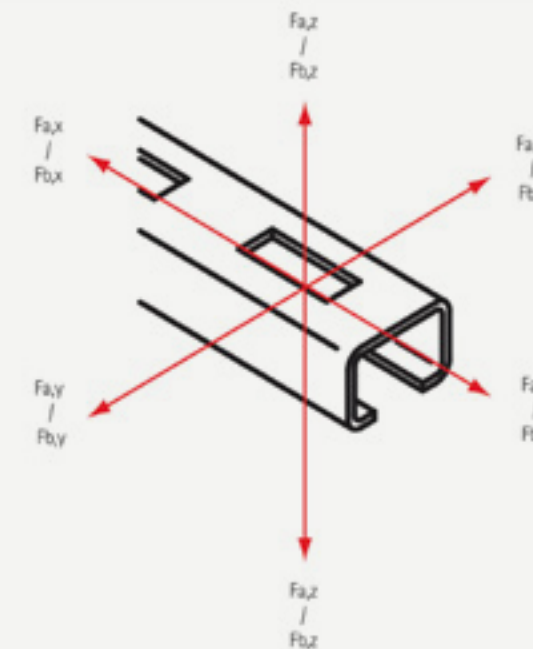
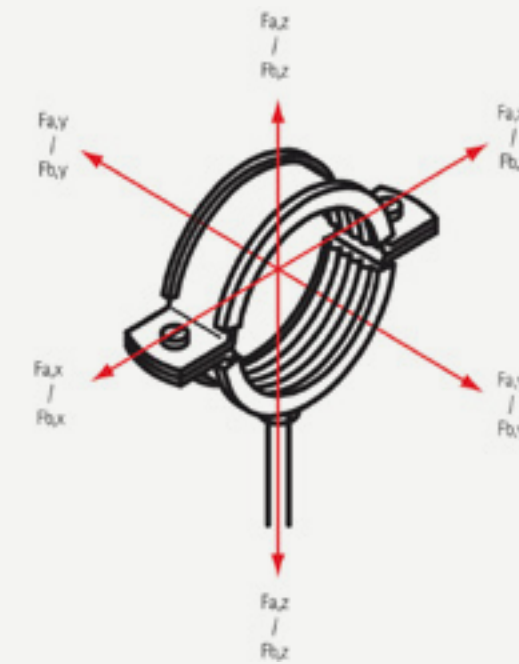
INSPECTION

Cooling and
Quality Assurance



Maximum Allowed Load.

From most of our products a maximum allowed load is included in the article tables. Stand values are determined by the measuring method described in the testing prescriptions RAL-GZ 655, which is set up by the 'Gütegemeinschaft Rohrbefestigung!'. If the product is provided with the 'RAL-Gütezeichen', the test results are checked by an independent testing institute.



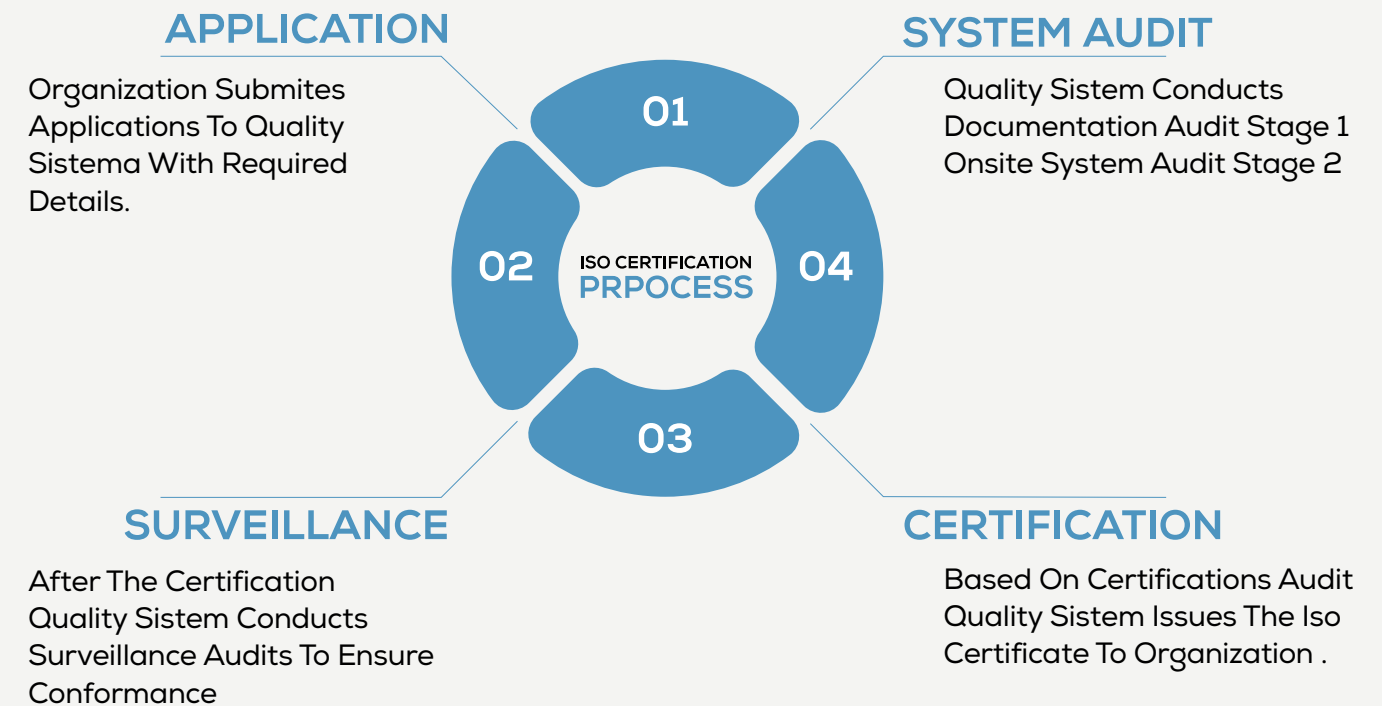
Force Directions (F) x, y, and z (at 20°C)

Fa = Maximum Allowe Load
 Fb = Breaking Load
 For plastic clamps the breaking load is included.

Commitment To Quality

Our commitment to quality is clearly revealed in the way we do our business; our processes, our close interaction with our clients as well By delivering superior products tailored to the specific construction needs, ambitious solutions, and an outstanding as the strict product inspection procedures.

To achieve this, we have implemented quality systems & processes that are continually being improved to satisfy our customer's needs



FIREFIGHTING FIXATION SYSTEM

1.0

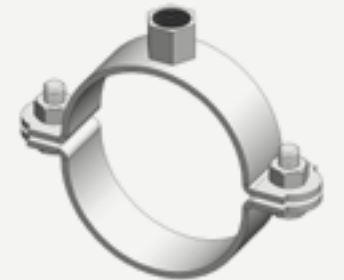
FIREFIGHTING FIXATION SYSTEM

1.1

BIS CLAMPS

- 1.1.1 Plain Split Clamp

PAGE 21

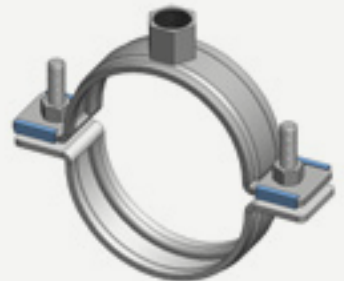


1.2

BIS INDUSTRIAL CLAMPS

- 1.2.1 BIS Heavy Duty Clamp HD1501 (M8/10, M10/12) (BUP1000)
- 1.2.2 BIS Heavy Duty Clamp HD1501 (M16) (BUP1000)

PAGE 23



1.3

BIS Sprinkler Clamp

- 1.3.1 Sprinkles Clamp

PAGE 27



1.0

FIREFIGHTING FIXATION SYSTEM

1.4

U Bolt Clamps

- 1.4.1 U Bolt
- 1.4.2 Two Bolt Clamp



PAGE 29

1.5

Industrial Saddle

- 1.5.1 Riser Clamp
- 1.5.1 Two Bolt Riser Clamp



PAGE 33

1.6

U-STRAP CLAMP

- 1.6.1 U-Strap Clamp (M80M10)
- 1.6.2 Strap Clamp (M12M18)



PAGE 37

1.0

FIREFIGHTING FIXATION SYSTEM

1.7

Clevis Hangers

- 1.7.1 Clevis Hanger



PAGE 41

1.8

Rollers & Hangers

- 1.8.1 Adjustable Roller Hanger
- 1.8.2 Pipe Roller Chair
- 1.8.3 Pipe Roller
- 1.8.4 Roller Stand

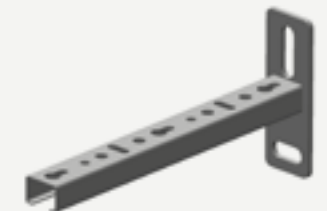


PAGE 43

1.9

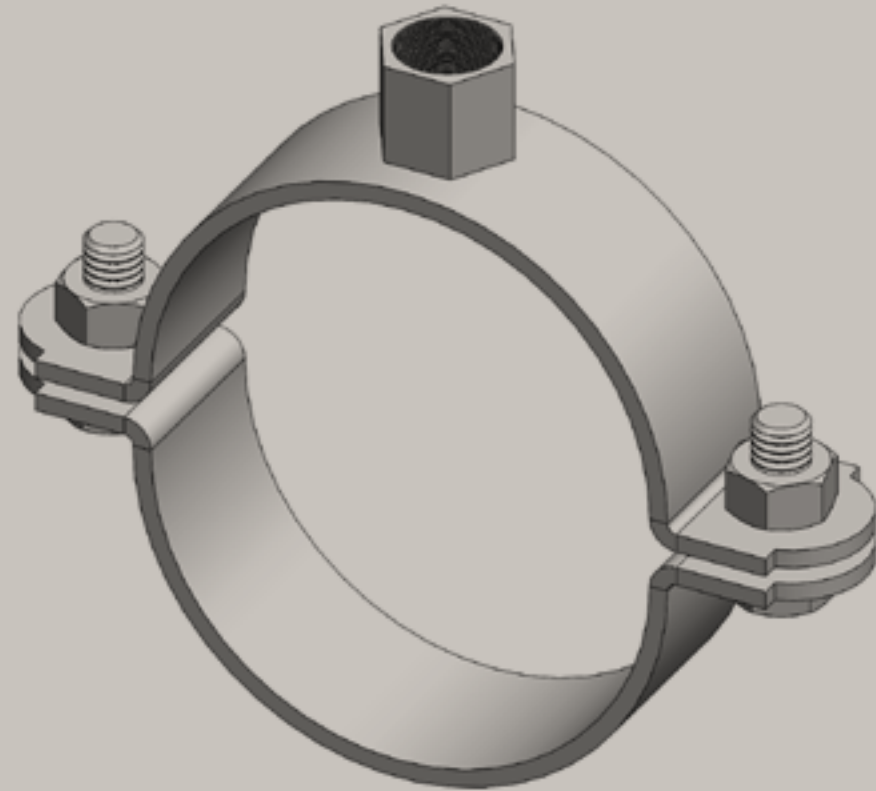
Wall Cantilever

- 1.9.1 BIS RapidRail Cantiliver Arms(BUP1000)



PAGE 51

Plain Split Clamp



FEATURES & BENEFITS

Lock bolts with combi cross recessed head for horizontal and vertical applications

Strengthened lock bolts for high load capacity

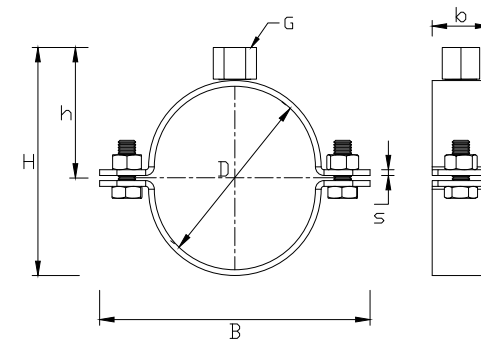
Screws secured with anti-loss washer

Material: steel

Electrogalvanized as per ASTM B 633

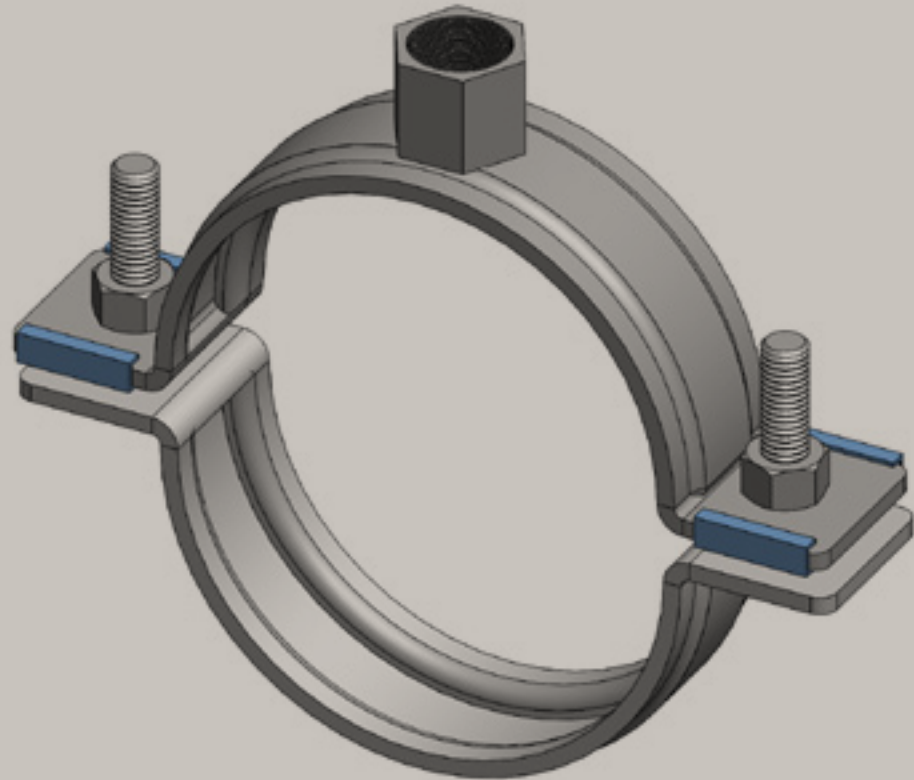
Standards (SC3), BS 1706 FE/ZN 12

Part No.	D (mm)	D (")	G	B (mm)	H (mm)	h (mm)	b x S (mm)	Faz (N)	Pack1
DM C13 3 018	15-19	3/8	M8/M10	59	30	23	20 x 2	2,000	600
DM C13 3 022	20-25	1/2	M8/M10	66	37	26	20 x 2	2,000	500
DM C13 3 028	26-30	3/4	M8/M10	72	43	29	20 x 2	2,000	400
DM C13 3 035	32-36	1	M8/M10	79	50	33	20 x 2	2,000	350
DM C13 3 040	38-43	1 1/4	M8/M10	86	57	36	20 x 2	2,000	300
DM C13 3 048	47-51	1 1/2	M8/M10	92	63	39	20 x 2	2,000	250
DM C13 3 054	53-58		M8/M10	98	69	42	20 x 2	2,000	250
DM C13 3 060	60-64	2	M8/M10	104	75	45	20 x 2	2,000	200
DM C13 3 063	63-66		M8/M10	108	72	47	20 x 2	2,000	200
DM C13 3 070	68-72		M8/M10	114	85	50	20 x 2	2,000	150
DM C13 3 075	74-80	2 1/2	M8/M10	119	90	53	20 x 2	2,000	150
DM C13 3 083	81-86		M8/M10	127	98	57	20 x 2	2,000	125
DM C13 3 090	92-97	3	M8/M10	134	105	60	20 x 2	2,000	125
DM C13 3 100	99-105	3 1/2	M8/M10	144	115	65	20 x 2	2,000	100
DM C13 3 110	107-112		M8/M10	164	125	70	20 x 2	2,000	100
DM C13 3 115	113-118	4	M8/M10	159	130	73	20 x 2	2,000	90
DM C13 3 125	125-130		M8/M10	169	140	78	20 x 2	2,000	75
DM C13 3 133	131-137		M8/M10	177	148	82	20 x 2	2,000	75
DM C13 3 140	137-142	5	M8/M10	184	155	85	20 x 2.5	3,000	75
DM C13 3 150	148-153		M8/M10	194	165	90	20 x 2.5	3,000	60
DM C13 3 160	159-166		M8/M10	204	175	95	25 x 2.5	3,000	60
DM C13 3 168	168-172	6	M8/M10	212	183	99	25 x 2.5	3,000	60
DM C13 3 200	200-212		M8/M10	244	215	115	25 x 2.5	3,000	60
DM C13 3 220	215-220	8	M8/M10	264	235	125	25 x 2.5	3,000	50
DM C13 3 250	248-252		M8/M10	294	265	140	25 x 2.5	3,000	50
DM C13 3 315	313-318		M8/M10	359	330	173	25 x 2.5	3,000	40



Hot Dip Galvanized, Stainless Steel, and Electrical Option available on request.
With connection nut M8/M10, M10/M12 available on request.
With M6 Side Nuts available on request.

Heavy Duty Clamp HD500 (M8-12) (BUP1000)



FEATURES & BENEFITS

Two-part clamp with two locking bolts

Up to and including 5": locking nut is captive,

Hidden in plastic holder

Bolts secured with anti-loss washer

With CO2 welded connection nut

Heavy design - Material: steel

Suitable for in- and-outdoor applications

Also available: noise insulating lining of

silicone rubber (reddish brown), heat

resistant up to +200 °C (A 35 15)

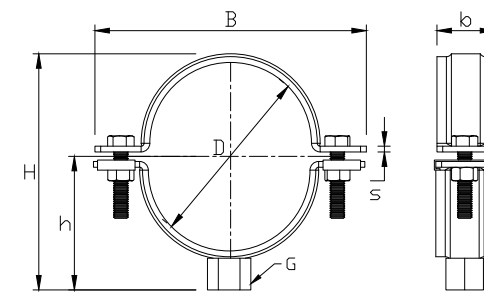
BIS Ultra Protect® 1000 system

stands min. 1,000 hours salt spray test

(max. 5% red rust) based on ISO 9227

tested for fire safety

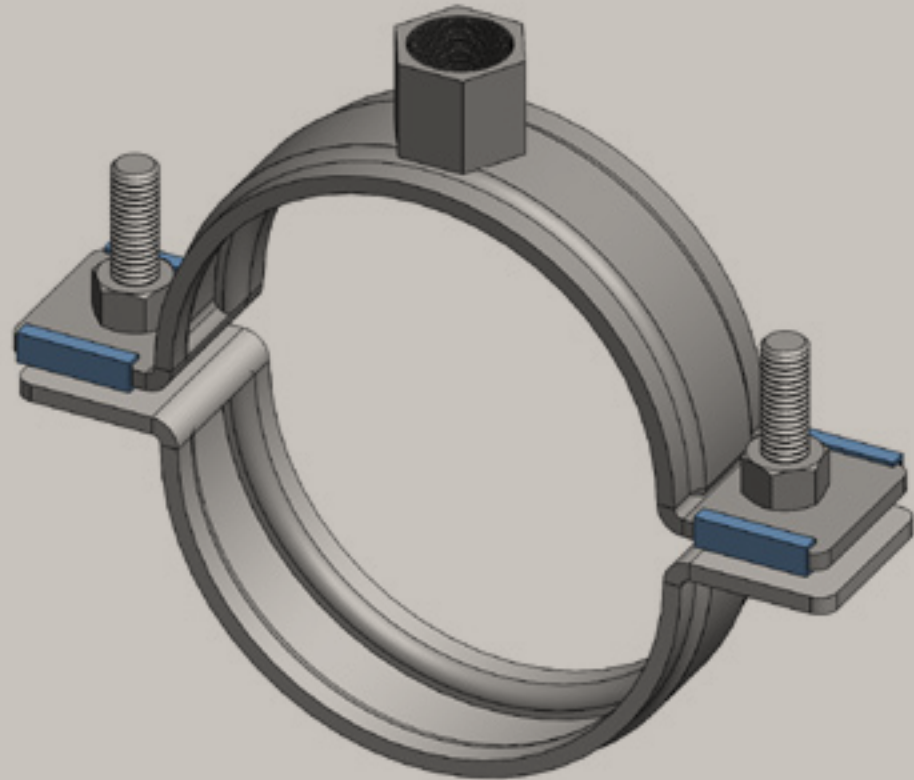
Part No.	D (mm)	D (")	DN (mm)	G (mm)	B (mm)	H (mm)	h (mm)	b x s (mm)	Fa,z (N)	Pack1
3303 8 019	15-19	3/8	10	M8/M10	75	46	32	30x2.5	2,100 RAL2	25
3303 8 023	19-23	1/2	15	M8/M10	78	50	34	30x2.5	2,100 RAL2	25
3303 8 030	25-30	3/4	20	M8/M10	84	57	38	30x2.5	2,100 RAL2	25
3303 8 036	31-36	1	25	M8/M10	91	63	41	30x2.5	2,100 RAL2	25
3303 8 042	37-42			M8/M10	98	69	44	30x2.5	2,100 RAL2	25
3303 8 045	40-45	1 1/4	32	M8/M10	101	72	45	30x2.5	2,100 RAL2	25
3303 8 052	47-52	1 1/2	40	M8/M10	109	79	49	30x2.5	2,100 RAL2	25
3303 8 058	53-58			M8/M10	115	85	52	30x2.5	2,100 RAL2	25
3303 8 065	59-65	2	50	M8/M10	122	92	55	30x2.5	2,100 RAL2	25
3303 8 071	66-71			M8/M10	129	98	58	30x2.5	2,100 RAL2	25
3304 8 078	72-78	2 1/2	65	M10/M12	136	115	70	30x3	4,000 RAL2	25
3304 8 085	79-85			M10/M12	144	122	75	30x3	4,000 RAL2	25
3304 8 092	86-92	3	80	M10/M12	152	129	78	30x3	4,000 RAL2	25
3304 8 106	98-106			M10/M12	165	143	85	30x3	4,000 RAL2	25
3304 8 116	108-116	4	100	M10/M12	175	153	90	30x3	4,000 RAL2	25
3304 8 123	116-123			M10/M12	182	160	94	30x3	4,000 RAL2	25
3304 8 133	125-133			M10/M12	193	170	99	30x3	4,000 RAL2	25
3304 8 140	132-140	5	125	M10/M12	200	177	102	30x3	4,000 RAL2	25
3304 8 154	148-154			M10/M12	215	191	109	30x3	4,000 RAL2	15
3304 8 169	159-169	6	150	M10/M12	240	207	117	38x4	8,200 RAL2	15
3304 8 183	173-183			M10/M12	254	221	124	38x4	8,200 RAL2	15
3304 8 202	192-202			M10/M12	274	240	133	38x4	8,200 RAL2	15
3304 8 219	208-219			M10/M12	290	256	141	38x4	8,200 RAL2	15
3304 8 227	217-227	8	200	M10/M12	299	265	146	38x4	8,200 RAL2	2



RAL[®] = tested, certified and extremely monitored according to RAL-GZ 656.



Heavy Duty Clamp HD500 (M16) (BUP1000)



FEATURES & BENEFITS

Two-part clamp with two locking bolts

Up to and including 5": locking nut is captive,

Hidden in plastic holder

Bolts secured with anti-loss washer

With CO2 welded connection nut

Heavy design - Material: steel

Suitable for in- and-outdoor applications

Also available: noise insulating lining of

silicone rubber (reddish brown), heat

resistant up to +200 °C (A 35 15)

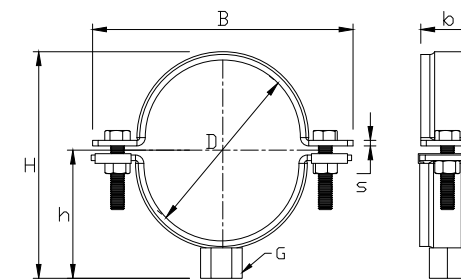
BIS Ultra Protect® 1000 system

stands min. 1,000 hours salt spray test

(max. 5% red rust) based on ISO 9227

tested for fire safety

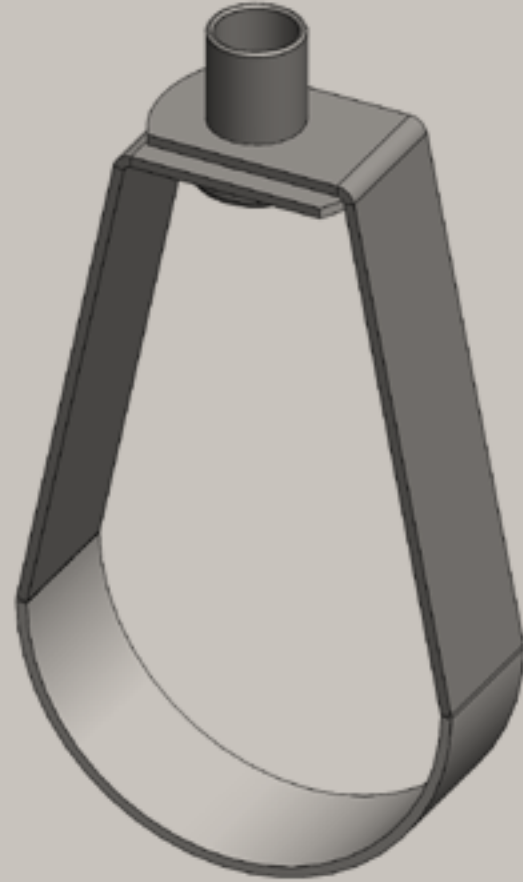
Part No.	D (mm)	D (")	DN (mm)	G	B (mm)	H (mm)	h (mm)	b x s (mm)	Fa,z (N)	Pack1
3306 8 169	159-169	6	150	M16	241	193	103	30 x 4,0	8,200 RAL1	2
3306 8 183	173-183			M16	255	207	110	30 x 4,0	8,200 RAL1	2
3306 8 202	192-202			M16	274	226	130	30 x 4,0	8,200 RAL1	2
3306 8 227	217-227	8	200	M16	299	263	144	30 x 4,0	8,200 RAL1	2
3306 8 241	229-241			M16	322	277	151	30 x 4,0	8,200 RAL1	2
3306 8 254	244-254			M16	335	290	158	30 x 4,0	8,200 RAL1	2
3306 8 264	254-264			M16	345	300	163	30 x 4,0	8,200 RAL1	2
3306 8 279	267-279	10	250	M16	360	315	170	30 x 4,0	8,200 RAL1	2
3306 8 289	279-289			M16	367	324	175	48 x 5,0	12,000 RAL1	2
3306 8 302	292-302			M16	380	337	181	48 x 5,0	12,000 RAL1	2
3306 8 325	315-325	12	300	M16	403	358	193	48 x 5,0	12,000 RAL1	2
3306 8 360	350-360	14	350	M16	439	395	210	48 x 5,0	12,000 RAL1	2
3306 8 374	364-374			M16	453	409	217	48 x 5,0	12,000 RAL1	2
3306 8 389	379-389			M16	468	424	225	48 x 5,0	12,000 RAL1	2
3306 8 408	398-408	16	400	M16	487	443	234	48 x 5,0	12,000 RAL1	2
3306 8 418	408-418			M16	498	441	227	48 x 5,0	12,000 RAL1	2
3306 8 436	424-436			M16	515	471	248	48 x 5,0	12,000 RAL1	2
3306 8 458	448-458	18	450	M16	537	493	259	48 x 5,0	12,000 RAL1	2
3306 8 509	499-509	20	500	M16	588	544	285	48 x 5,0	12,000 RAL1	2



RAL[®] = tested, certified and extremely monitored according to RAL-GZ 656.



BIS Sprinkler Clamp



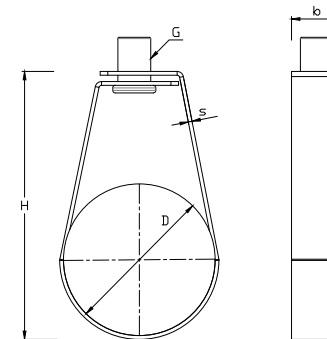
FEATURES & BENEFITS

For use in firefighting /sprinkler installations
 Easy to install, without tools
 High load capacity due to one-piece Design
 Knurled swivel nut allows vertical pipe
 Alignment during and after installation

locking device allows easy premounting
 material: steel
 pre-galvanized as per ASTM A 653 G90
 designed to meet MSS Standard SP-58,
 type 10 and SP-69



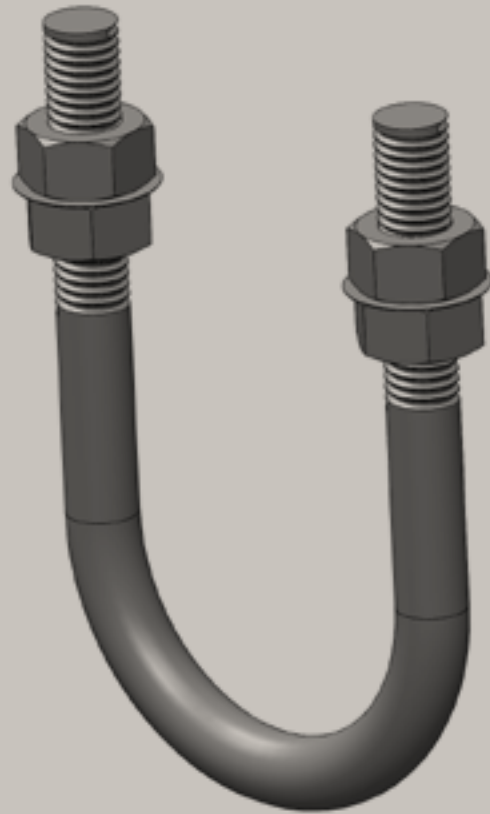
Part No.	D (mm)	D (")	G	h (mm)	b x s (mm)	Fa,z Appr. (N)	Pack1
DM C117 028	28	3/4	M10	61	20 X 15	3,000 FM , UL	400
DM C117 035	35	1	M10	61	20 X 15	3,000 FM , UL	300
DM C117 040	42	1 1/4	M10	75	20 X 15	3,000 FM , UL	250
DM C117 048	48	1 1/2	M10	81	20 X 15	3,000 FM , UL	200
DM C117 060	60	2	M10	100	20 X 15	3,000 FM , UL	180
DM C117 075	73	2 1/2	M10	120	32 X 2	4,500 FM , UL	75
DM C117 090	89	3	M10	135	32 X 2	4,500 FM , UL	60
DM C117 100	105	3 1/2	M10	150	32 X 2	4,500 FM , UL	40
DM C117 115	115	4	M10	165	32 X 2.5	5,500 FM , UL	40
DM C117 140	140	5	M12	195	40 X 2.5	6,500 FM , UL	25
DM C117 168	168	6	M12	230	40 X 3	7,500 FM , UL	20
DM C117 219	219	8	M12	290	50 X 3	9,000 FM , UL	10
DM C117 273	273	10	M12	315	50 X 3	9,000 FM , UL	8



Hot Dip Galvanized, Stainless Steel, and Electrical Foption available on request.



U-Bolt



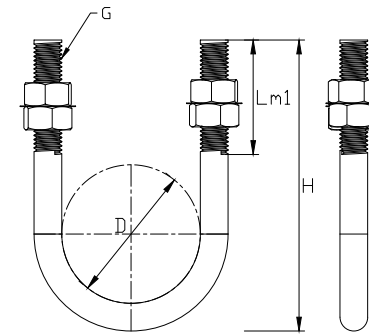
FEATURES & BENEFITS

High load capacity due to one-piece design
 Supplied with four nuts and two washes
 Material: steel
 Special U bolts with longer tangents and threads available on request

Electrogalvanized as per ASTM B 633 Standards (SC3), BS 1706 FE/ZN 12
 Designed to meet MSS Standard SP-58, type 24 and SP-69

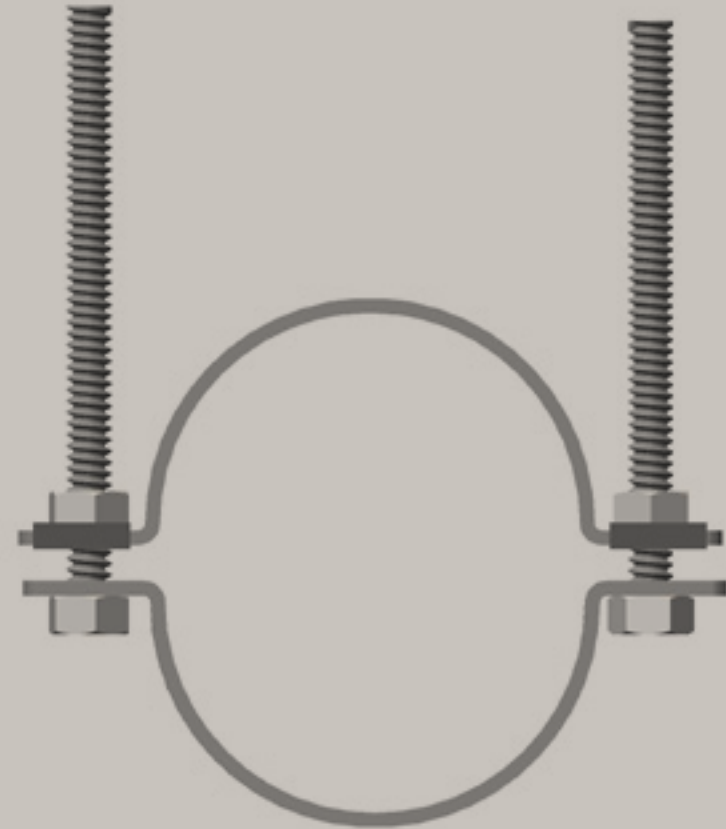


Part No.	D (mm)	D (")	G	H (mm)	Lm1 (mm)	Fa,z (N)	Pack1
DM C14 4 022	21	1/2	M10	65	50	6,000	250
DM C14 4 028	27	3/4	M10	77	50	6,000	200
DM C14 4 035	34	1	M10	85	50	6,000	200
DM C14 4 042	43	1 1/4	M10	93	50	6,000	175
DM C14 4 048	48	1 1/2	M10	100	50	6,000	150
DM C14 4 060	60	2	M10	110	50	6,000	150
DM C14 4 075	76	2 1/2	M12	127	50	10,000	100
DM C14 4 090	89	3	M12	140	50	10,000	75
DM C14 4 115	115	4	M12	165	50	10,000	75
DM C14 4 140	140	5	M12	190	50	10,000	70
DM C14 4 168	168	6	M12	220	50	10,000	50
DM C14 4 219	219	8	M16	295	75	20,000	20
DM C14 4 273	273	10	M20	370	100	32,500	10
DM C14 4 324	324	12	M20	420	100	32,500	10
DM C14 4 356	356	14	M20	455	100	32,500	10
DM C14 4 406	406	16	M20	505	100	32,500	10
DM C14 4 457	457	18	M24	555	100	45,000	5
DM C14 4 508	508	20	M24	605	100	45,000	5
DM C14 4 610	610	24	M24	710	100	45,000	5



Hot Dip Galvanized Option Available on Request.
 Sizes of the U Bolts can be modified to be used with rubber support inserts.
 Alternate rod sizes for different pipe sizes available on request.

Two-Bolt Clamp



FEATURES & BENEFITS

Designed to act as a horizontal support for heavier pipes

Two bolt arrangement provides sturdier support

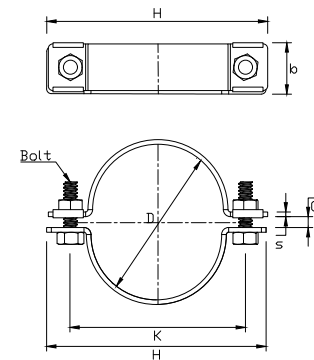
Material: steel

Electrogalvanized as per ASTM B 633 Standards (SC3), BS 1706 FE/ZN 12

Designed to meet MSS Standard SP-58-2002, type 4 and SP-69



Part No.	D	Bolt	bxs	k	H	c	Fa,z	Pack1
	(")		(mm)	(mm)	(mm)	(mm)	(N)	
DMC2 11 022	1/2"	M 10	25 x 5.0	68	97	12	1700	60
DMC2 11 028	3/4"	M 10	25 x 5.0	76	105	12	1700	60
DMC2 11 035	1	M 10	25 x 5.0	84	113	12	1700	50
DMC2 11 040	1-1/4"	M 10	25 x 5.0	92	121	12	1700	50
DMC2 11 048	1-1/2"	M 10	25 x 5.0	98	127	12	1700	40
DMC2 11 060	2"	M 10	25 x 5.0	116	156	16	1700	35
DMC2 11 075	2-1/2"	M 12	25 x 6.0	142	182	16	4000	35
DMC2 11 090	3	M 12	25 x 6.0	156	196	16	4000	30
DMC2 11 100	3-1/2"	M 12	25 x 6.0	168	208	16	4000	30
DMC2 11 115	4"	M 12	25 x 6.0	180	220	19	4000	25
DMC2 11 140	5"	M 16	40 x 9.0	214	252	19	6000	20
DMC2 11 168	6"	M 16	40 x 9.0	242	290	22	11000	15
DMC2 11 220	8"	M 16	40 x 9.0	152	352	25	12000	10
DMC2 11 273	10"	M 16	50 x 9.0	358	406	25	15000	5
DMC2 11 323	12"	M 20	50 x 12.0	430	490	25	15000	4
DMC2 11 355	14"	M 20	50 x 12.0	480	546	28	22000	4
DMC2 11 406	16"	M 20	60 x 16.0	2	597	28	22000	2
DMC2 11 457	18"	M 20	60 x 16.0	610	66	32	22000	2
DMC2 11 508	20"	M 20	60 x 16.0	6680	776	35	22000	1
DMC2 11 610	24"	M 20	60 x 16.0	780	876	42	22000	1



Hot Dip Galvanized, Stainless Steel option available on request.



Riser Clamp



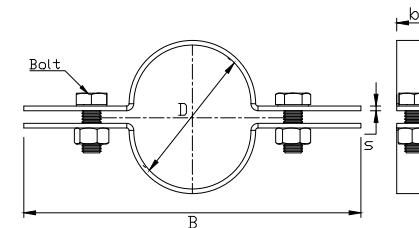
FEATURES & BENEFITS

Designed to act as a rigid support or guide for vertical pipes
 Suitable for use with all types of pipes
 Material: steel

Electrogalvanized as per ASTM B 633 Standards (SC3), BS 1706 FE/ZN 12
 Designed to meet MSS Standard SP-58-2002, type 8 and SP-69

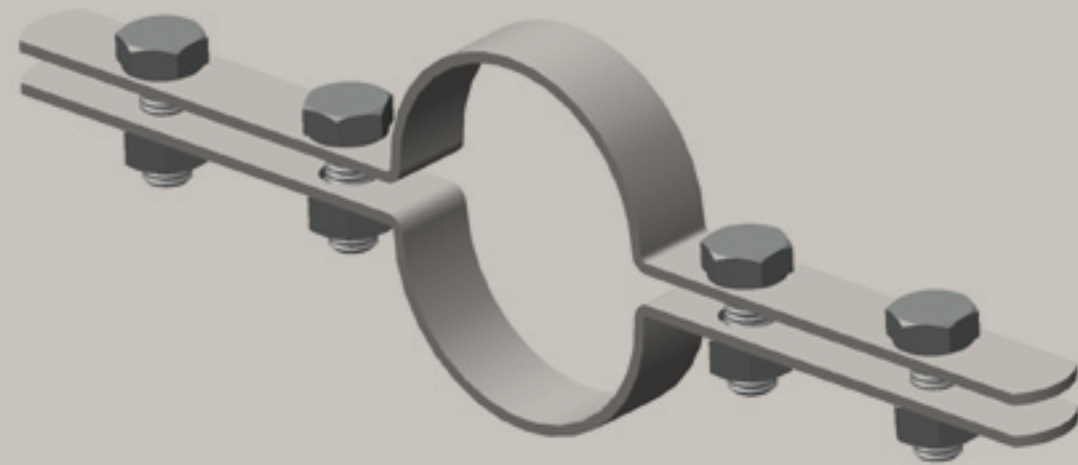


Part No.	D (")	Bolt	B (mm)	bxh (mm)	Fa.z (N)	Pack1
DM C11 022	1/2"	M10	200	25 x 5.0	1,700	60
DM C11 028	3/4"	M10	210	25 x 5.0	1,700	60
DM C11 035	1	M10	230	25 x 5.0	1,700	50
DM C11 040	1 1/4"	M10	260	25 x 5.0	1,700	50
DM C11 048	1 1/2"	M10	260	25 x 5.0	1,700	40
DM C11 060	2"	M10	260	25 x 5.0	1,700	35
DM C11 075	2 1/2"	M12	290	25 x 6.0	4,000	35
DM C11 090	3	M12	290	25 x 6.0	4,000	30
DM C11 100	3 1/2"	M12	330	25 x 6.0	4,000	30
DM C11 115	4"	M12	330	25 x 6.0	4,000	25
DM C11 140	5"	M16	350	40 x 6.0	6,000	20
DM C11 168	6"	M16	380	40 x 6.0	6,000	15
DM C11 220	8"	M16	470	40 x 10.0	11,000	10
DM C11 273	10"	M16	520	50 x 10.0	12,000	5
DM C11 323	12"	M20	580	50 x 12.0	15,000	4
DM C11 355	14"	M20	610	50 x 12.0	15,000	4
DM C11 406	16"	M20	660	60 x 16.0	22,000	2
DM C11 457	18"	M20	710	60 x 16.0	22,000	2
DM C11 508	20"	M20	760	60 x 16.0	22,000	1
DM C11 610	24"	M20	880	60 x 16.0	22,000	1



Hot Dip Galvanized, Stainless Steel option available on request.

Two Bolt Riser Clamp



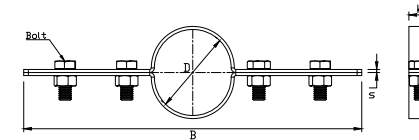
FEATURES & BENEFITS

Designed to act as a rigid support or guide for vertical pipes
 Suitable for use with all types of pipes
 Material: steel

Electrogalvanized as per ASTM B 633 Standards (SC3), BS 1706 FE/ZN 12
 Designed to meet MSS Standard SP-58-2002, type 42

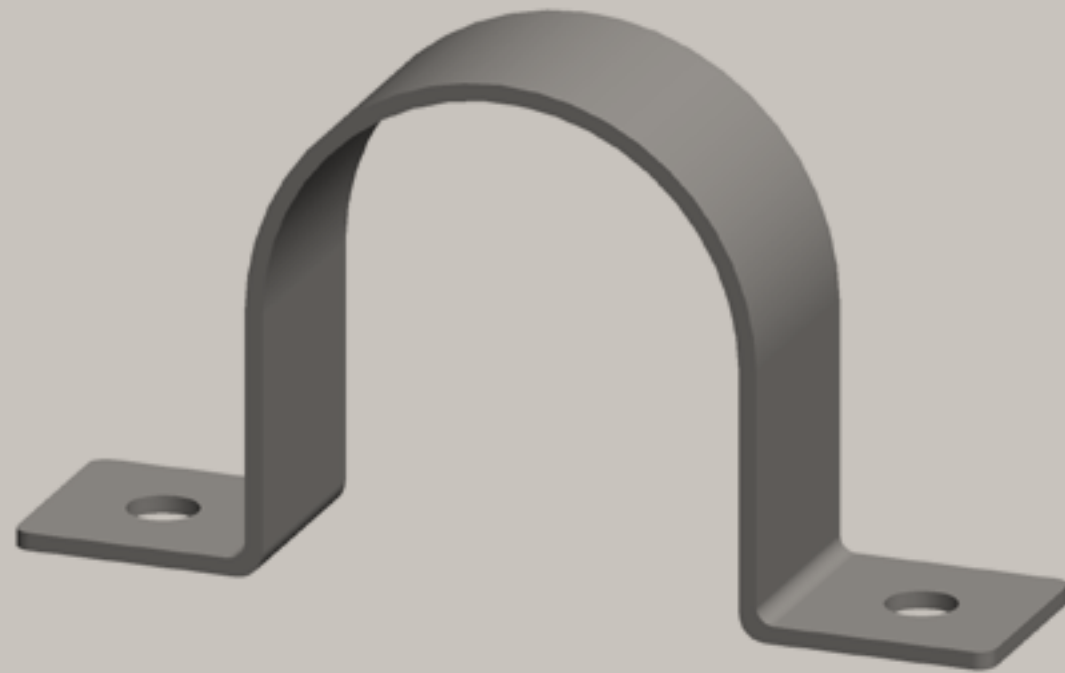


Part No.	D (")	Bolt	B (mm)	bxz (mm)	Fa,z (N)	Pack1
DM C11 3 022	1/2"	M10	200	25 x 5.0	1,700	60
DM C11 3 028	3/4"	M10	210	25 x 5.0	1,700	60
DM C11 3 035	1	M10	230	25 x 5.0	1,700	50
DM C11 3 040	1 1/4"	M10	260	25 x 5.0	1,700	50
DM C11 3 048	1 1/2"	M10	260	25 x 5.0	1,700	40
DM C11 3 060	2"	M10	260	25 x 5.0	1,700	35
DM C11 3 075	2 1/2"	M12	290	25 x 6.0	4,000	35
DM C11 3 090	3	M12	290	25 x 6.0	4,000	30
DM C11 3 100	3 1/2"	M12	330	25 x 6.0	4,000	30
DM C11 3 115	4"	M12	330	25 x 6.0	4,000	25
DM C11 3 140	5"	M16	350	40 x 6.0	6,000	20
DM C11 3 168	6"	M16	380	40 x 6.0	6,000	15
DM C11 3 220	8"	M16	470	40 x 10.0	11,000	10
DM C11 3 273	10"	M16	520	50 x 10.0	12,000	5
DM C11 3 323	12"	M20	580	50 x 12.0	15,000	4
DM C11 3 355	14"	M20	610	50 x 12.0	15,000	4
DM C11 3 406	16"	M20	660	60 x 16.0	22,000	2
DM C11 3 457	18"	M20	710	60 x 16.0	22,000	2
DM C11 3 508	20"	M20	760	60 x 16.0	22,000	1
DM C11 3 510	24"	M20	880	60 x 16.0	22,000	1



Hot Dip Galvanized, Stainless Steel option available on request.

U-Strap Clamp (M8-M10)



FEATURES & BENEFITS

For mounting plain or insulated pipes

Material: steel

Can be used with Rubber Support Inserts

Electrogalvanized as per ASTM B 633

Slotted holes on both sides allow convenient installation

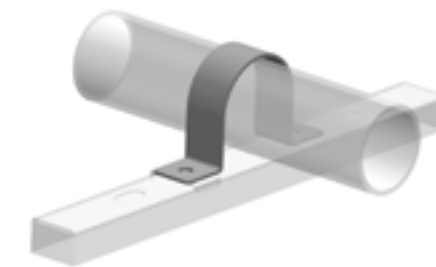
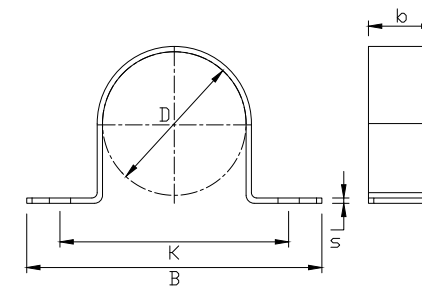
Standards (SC3), BS 1706 FE/ZN 12

Designed to meet MSS Standard SP-

58, type 26 and SP-69

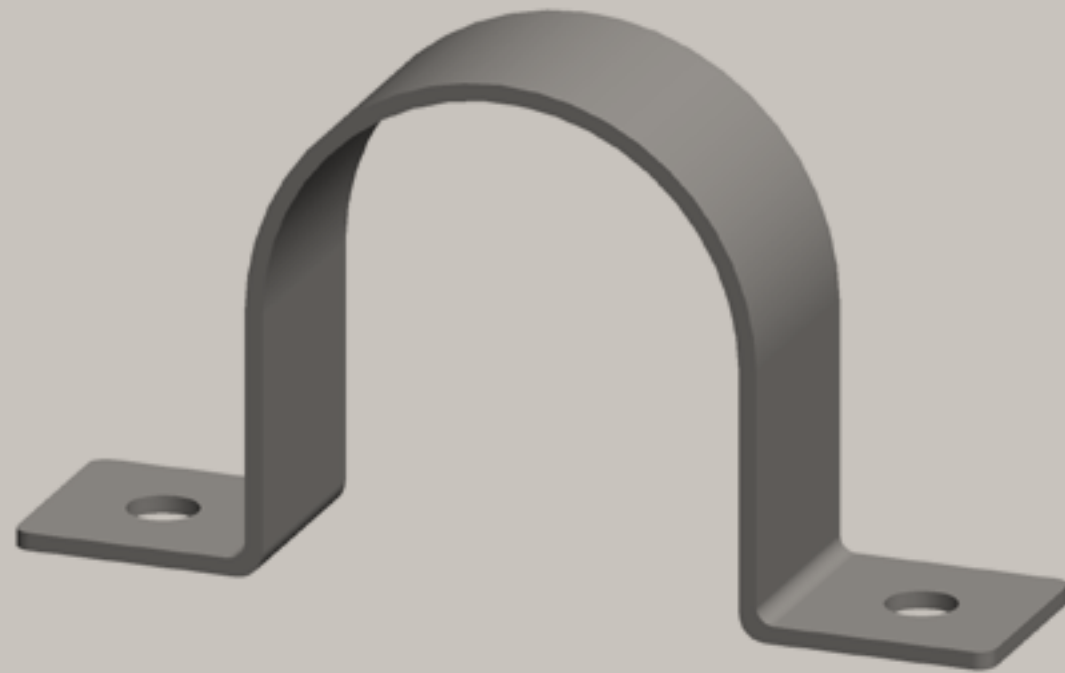
 **HARMONY**
SUPPLIER

Part No.	D (mm)	D (")	Bolt	B (mm)	b x s (mm)	k (mm)	Fa,z (N)	Pack1
DM C15 5 022	22	1/2	M 8	76	25 x 2.0	51	5,500	500
DM C15 5 028	28	3/4	M 8	82	25 x 2.0	57	5,500	400
DM C15 5 035	35	1	M 8	89	25 x 2.0	64	5,500	400
DM C15 5 040	40	1 1/4	M 8	96	25 x 2.0	71	5,500	350
DM C15 5 048	48	1 1/2	M 8	102	25 x 2.0	77	5,500	300
DM C15 5 054	54	-	M 8	108	25 x 2.0	83	5,500	250
DM C15 5 060	60	2	M 8	114	25 x 2.0	89	5,500	200
DM C15 5 067	67	-	M 8	121	25 x 2.0	96	5,500	200
DM C15 5 075	75	2 1/2	M 8	145	25 x 3.0	113	6,500	150
DM C15 5 082	82	-	M 8	152	25 x 3.0	120	6,500	150
DM C15 5 090	90	3	M 8	160	25 x 3.0	128	6,500	150
DM C15 5 100	100	3 1/2	M 8	170	25 x 3.0	138	6,500	150
DM C15 5 108	108	-	M 8	178	25 x 3.0	146	6,500	125
DM C15 5 115	115	4	M 8	185	25 x 3.0	153	6,500	125
DM C15 5 126	126	-	M 10	196	25 x 3.0	164	6,500	125
DM C15 5 140	140	5	M 10	210	25 x 3.0	178	6,500	100
DM C15 5 148	155	-	M 10	218	28 x 3.0	186	6,500	100
DM C15 5 155	168	-	M 10	225	25 x 3.0	193	6,500	100
DM C15 5 168	179	6	M 10	237	25 x 3.0	205	6,500	100
DM C15 5 179	190	-	M 10	249	25 x 3.0	217	6,500	100
DM C15 5 190	205	-	M 10	260	38 x 3.0	228	9,000	50
DM C15 5 205	219	-	M 10	275	38 x 3.0	243	9,000	50
DM C15 5 219	230	8	M 10	289	38 x 3.0	257	9,000	50
DM C15 5 230	230	-	M 10	300	38 x 3.0	268	9,000	30



Other Dimensions available on Request.
 Sizes of U Strap can be modified to be used with Rubber Support Inserts.
 Hot Dip Galvanized and Stainless Steel option available on request.

U-Strap Clamp (M12-M18)



FEATURES & BENEFITS

For mounting plain or insulated pipes

Can be used with Rubber Support Inserts

Slotted holes same as used u strap

Material: steel

Electrogalvanized as per ASTM B 633

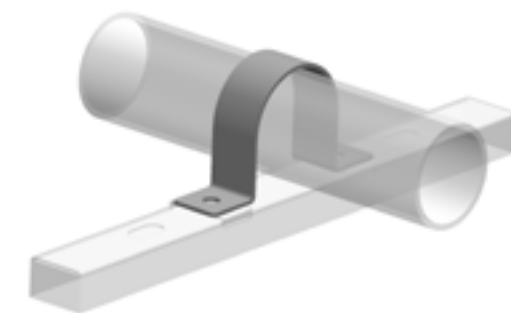
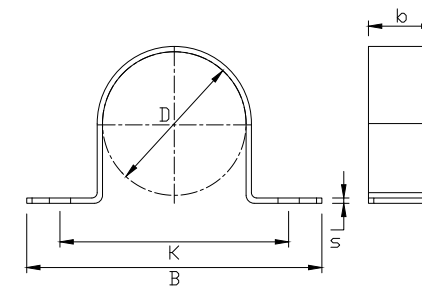
Standards (SC3), BS 1706 FE/ZN 12

Designed to meet MSS Standard SP-

58, type 26 and SP-69

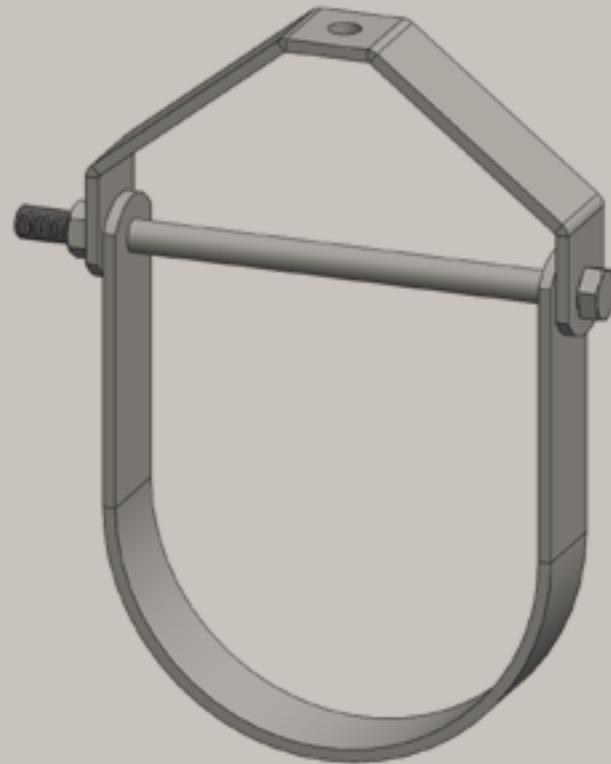
 **HARMONY**
SUPPLIER

Part No.	D (mm)	D (")	Bolt	B (mm)	b x s (mm)	k (mm)	Fa.z (N)	Pack1
DM C15 5 241	241	-	M12	332	38 x 4.0	291	13,500	35
DM C15 5 263	263	-	M12	354	38 x 4.0	313	13,500	35
DM C15 5 273	273	10	M18	364	38 x 4.0	323	13,500	35
DM C15 5 295	295	-	M18	386	38 x 4.0	345	13,500	30
DM C15 5 323	323	12	M18	414	38 x 4.0	373	13,500	30
DM C15 5 356	356	14	M18	447	50 x 4.0	406	19,000	10
DM C15 5 374	374	-	M18	465	50 x 4.0	424	19,000	15
DM C15 5 406	406	16	M18	497	50 x 4.0	456	19,000	15
DM C15 5 432	432	-	M18	523	50 x 4.0	482	19,000	15
DM C15 5 456	456	18	M18	547	50 x 4.0	506	19,000	10
DM C15 5 482	482	-	M18	573	50 x 4.0	532	19,000	10
DM C15 5 508	508	20	M18	599	50 x 4.0	558	19,000	10
DM C15 5 533	533	-	M18	624	50 x 4.0	583	19,000	10
DM C15 5 559	559	-	M18	650	50 x 4.0	609	19,000	10
DM C15 5 583	583	-	M18	674	50 x 4.0	633	19,000	10
DM C15 5 610	610	24	M18	701	50 x 4.0	660	19,000	10
DM C15 5 658	658	-	M18	766	50 x 6.0	718	24,000	5
DM C15 5 690	690	-	M18	798	50 x 6.0	750	24,000	5
DM C15 5 760	760	-	M18	868	50 x 6.0	820	24,000	5
DM C15 5 863	863	-	M18	971	50 x 6.0	923	24,000	5
DM C15 5 918	918	-	M18	1,026	50 x 6.0	978	24,000	5



Other Dimensions available on Request.
 Sizes of U Strap can be modified to be used with Rubber Support Inserts.
 Hot Dip Galvanized and Stainless Steel option available on request.

Clevis Hanger



FEATURES & BENEFITS

Designed for chilled water pipe work and firefighting systems

Design permits vertical adjustment of pipe after installation

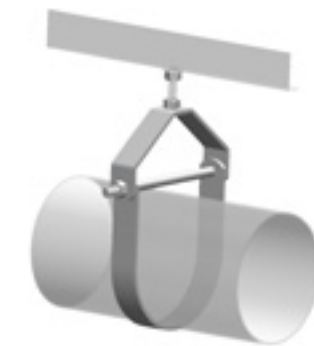
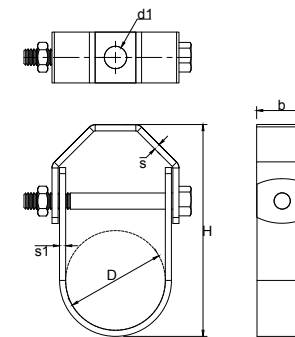
Material: steel

Electrogalvanized as per ASTM B 633 Standards (SC3), BS 1706 FE/ZN 12

Designed to meet MSS Standard SP-58, type 1 and SP-69

Hanger load nut above clevis must be tightened securely to ensure proper hanger performance

Part No.	D (mm)	D (")	G	H (mm)	b (mm)	s (mm)	s1 (mm)	d1 (mm)	Fa,z Appr. (N)	Pack1
DM C12 2 022	22	1/2	M8 x 60mm	70	25	3	3	10	4,000 FM, UL	125 *
DM C12 2 028	28	3/4	M8 x 68mm	76	25	3	3	10	4,000 FM, UL	125 *
DM C12 2 035	35	1	M8 x 78mm	82	25	3	3	10	4,000 FM, UL	125 *
DM C12 2 040	42	1 1/4	M8 x 82mm	92	25	3	3	10	4,000 FM, UL	125 *
DM C12 2 048	48	1 1/2	M8 x 88mm	100	25	3	3	10	4,000 FM, UL	100 *
DM C12 2 060	60	2	M10 x 110mm	117	25	3	3	10	4,000 FM, UL	75 *
DM C12 2 075	73	2 1/2	M10 x 125mm	146	25	4	4	10	6,5000 FM, UL	60 *
DM C12 2 090	89	3	M10 x 140mm	155	25	4	4	10	6,5000 FM, UL	50 *
DM C12 2 100	105	3 1/2	M10 x 155mm	173	25	4	4	10	6,5000 FM, UL	40 *
DM C12 2 115	115	4	M10 x 170mm	198	32	6	6	10	8,000 FM, UL	20 *
DM C12 2 140	140	5	M12 x 195mm	232	32	6	6	12	8,000 FM, UL	15 *
DM C12 2 168	168	6	M12 x 225mm	266	40	5	6	12	11,000 FM, UL	10 *
DM C12 2 219	219	8	M12 x 275mm	338	40	5	6	12	11,000 FM, UL	15 *
DM C12 2 273	273	10	M16 x 360mm	419	40	6	6	16	11,000 FM, UL	10
DM C12 2 323	323	12	M20 x 420mm	490	50	6	10	20	15,000 FM, UL	6
DM C12 2 355	355	14	M20 x 455mm	556	50	6	10	20	15,000 FM, UL	6
DM C12 2 406	406	16	M24 x 510mm	610	65	6	12	24	17,000 FM, UL	3
DM C12 2 457	457	18	M24 x 555mm	675	65	6	12	24	17,000 FM, UL	3
DM C12 2 508	508	20	M24 x 610mm	715	75	10	12	30	22,000 FM, UL	2
DM C12 2 610	610	24	M24 x 710mm	850	75	10	16	30	27,000 FM, UL	2
DM C12 2 755	755	30	M24 x 890mm	995	75	10	20	30	30,000 FM, UL	1

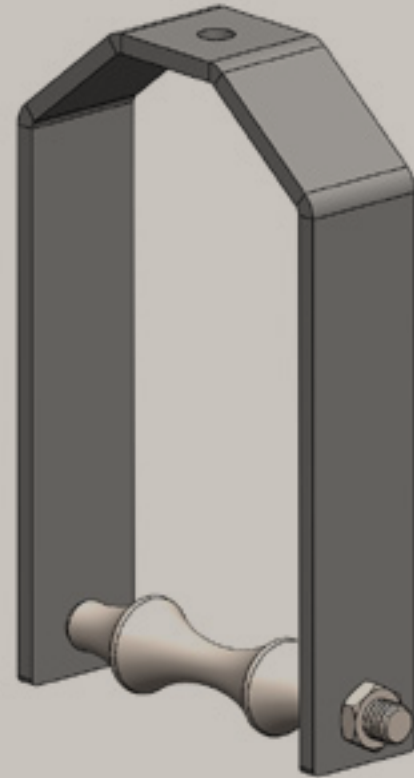


Hot Dip Galvanized and Stainless-Steel option available on request.

The Sizes of the Clevis Hanger can be modified to be used with Rubber Support Inserts.

Custom made Clevis Hanger are available on request.

Ajustable Roller Hanger

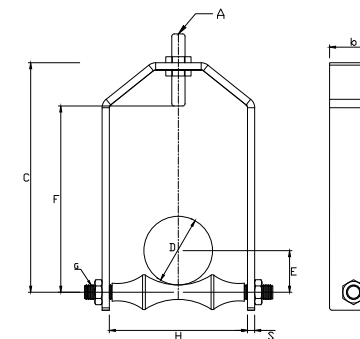


Part No.	D	A	C	E	F	H	G	bx	Fa,z
	(")		(mm)	(mm)	(mm)	(mm)		(mm)	(N)
DMC177 060	2	M10	122	41	98	64	M12	25 X 3.0	1600
DMC177 075	2 1/2	M12	148	50	124	92	M12	25 X 3.0	1600
DMC177 090	3	M12	161	56	137	94	M12	32 X 6.0	2100
DMC177 100	3 1/2	M12	180	65	153	110	M12	32 X 6.0	2100
DMC177 115	4	M12	192	69	162	122	M12	40 X 6.0	2900
DMC177 140	5	M12	233	88	202	152	M12	50 X 6.0	5500
DMC177 168	6	M18	260	102	227	180	M20	50 X 6.0	5500
DMC177 220	8	M22	326	131	283	230	M20	65 X 10.0	6000
DMC177 273	10	M22	381	161	339	285	M20	65 X 10.0	6000
DMC177 323	12	M22	440	192	400	335	M24	65 X 12.0	7500
DMC177 355	14	M24	448	212	433	372	M24	65 X 12.0	7500
DMC177 406	16	M24	524	233	480	421	M32	65 X 12.0	7500
DMC177 457	18	M24	590	267	550	474	M32	65 X 12.0	7500
DMC177 508	20	M32	664	300	605	522	M36	75 X 16.0	9000
DMC177 610	24	M32	788	351	718	630	M36	75 X 16.0	11100

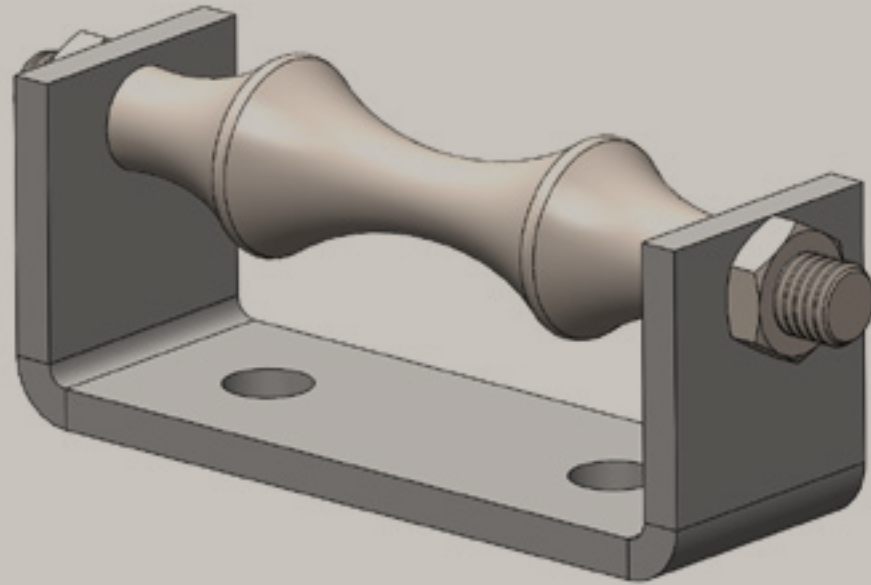
FEATURES & BENEFITS

For support of pipe where horizontal movement due to expansion and contraction may occur
 Vertical adjustment up to 6" is possible
 Material Bracket: steel

Roller: solid steel shaft
 Electrogalvanized as per ASTM B 633 Standards (SC3), BS 1706 FE/ZN 12
 Designed to meet MSS Standard SP-58-2002, type 43 and SP-69



Pipe Roller Chair



Part No.	D (")	B (mm)	C (mm)	k (mm)	l (mm)	G	bxh (mm)	Fa,z (N)
DMC166 060	2	110	40	35	12	M 12	32 x 6.0	6700
DMC166 075	2 1/2	110	40	35	12	M 12	32 x 6.0	10000
DMC166 090	3	145	45	50	12	M 12	32 x 6.0	13800
DMC166 100	3 1/2	145	45	50	12	M 12	32 x 6.0	17300
DMC166 115	4	180	50	50	16	M 12	40 x 8.0	21100
DMC166 140	5	215	55	75	16	M 12	40 x 8.0	30400
DMC166 168	6	250	60	80	16	M 20	50 x 10.0	34700
DMC166 220	8	285	75	85	19	M 20	50 x 10.0	34700
DMC166 273	10	345	90	130	19	M 20	50 x 12.0	42900
DMC166 323	12	395	105	140	19	M 24	50 x 12.0	53400
DMC166 355	14	440	120	165	25	M 24	50 x 12.0	53400
DMC166 406	16	480	140	210	25	M 32	75 x 12.0	53400
DMC166 457	18	525	155	235	25	M 32	75 x 12.0	62300
DMC166 508	20	555	165	260	25	M 36	75 x 12.0	71100
DMC166 610	24	665	200	310	25	M 50	100 x 16.0	71100
DMC166 660	26	720	220	335	25	M 50	100 x 16.0	76000
DMC166 712	28	771	240	360	25	M 50	100 x 16.0	76000
DMC166 762	30	822	260	385	25	M 50	100 x 16.0	80000

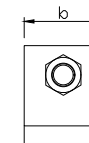
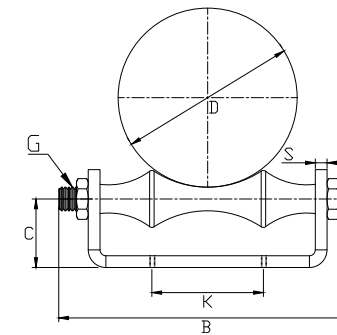
FEATURES & BENEFITS

For support of pipe where horizontal movement due to expansion and contraction may occur

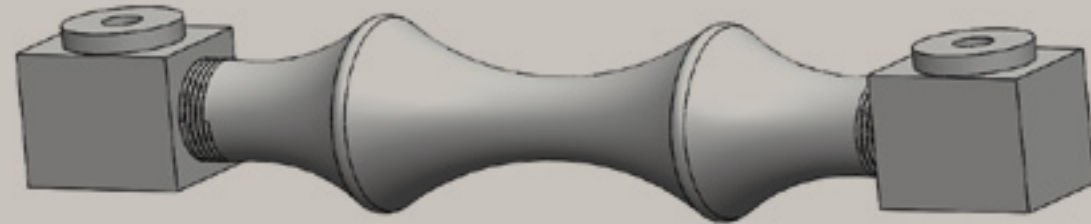
Material bracket: steel

Roller: solid steel shaft

Electrogalvanized as per ASTM B 633 Standards (SC3), BS 1706 FE/ZN 12
Designed to meet BS3974-1: 1974;
MSS Standard SP-58-2002, type 44
and SP-69



Pipe Roller

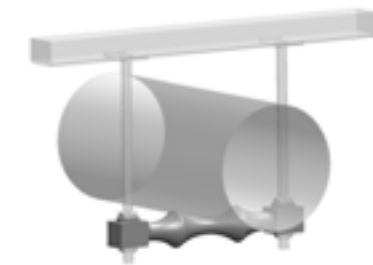
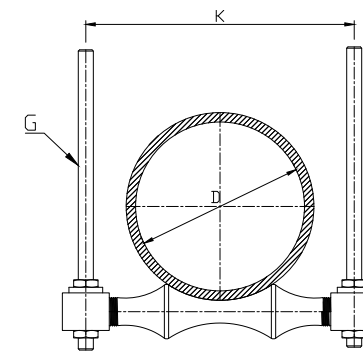


FEATURES & BENEFITS

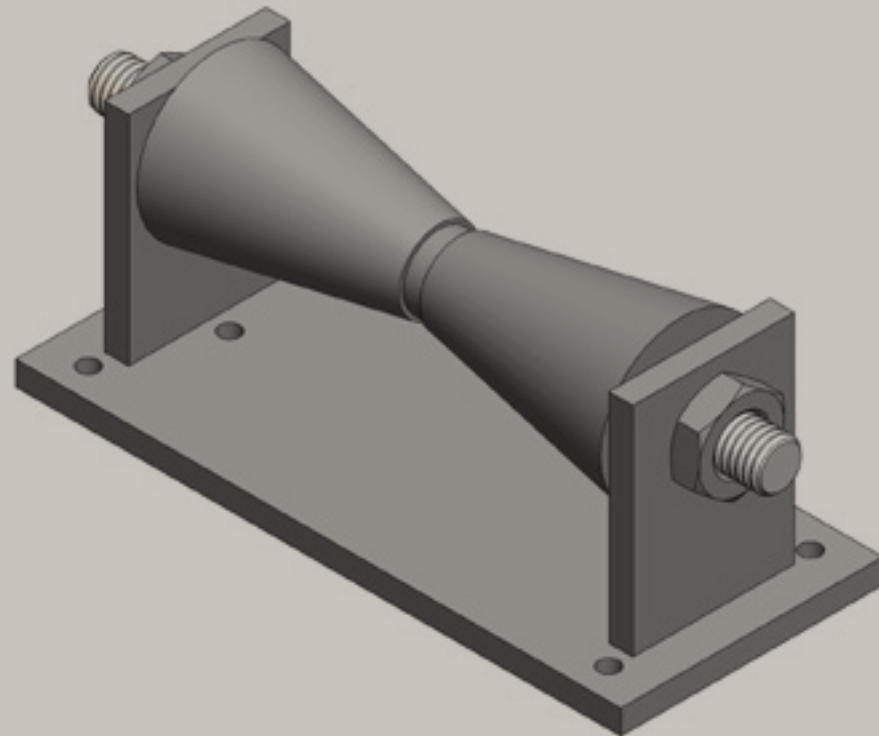
- Support of pipes to provide axial movement
- Multiple pipe installations by using two rollers
- Versatile design permits axial movement of pipe due to expansion and contraction
- Standard installation to support single pipe and design permits installation of two pipes in double banking arrangement.
- Material socket: steel Roller: steel shaft
- Electrogalvanized as per ASTM B 633 Standards (SC3), BS 1706 FE/ZN 12
- Designed to meet MSS Standard SP-58, type 41 and SP-69
- Insulation protection products such as Rubber Support Inserts,



Part No.	D (")	G	k (mm)	Fa,z (N)
DM C28 8 060	2	M 12	125	3,500
DM C28 8 075	2 1/2	M 12	144	3,500
DM C28 8 090	3	M 12	157	3,500
DM C28 8 100	3 1/2	M 12	169	3,500
DM C28 8 115	4	M 12	187	5,000
DM C28 8 140	5	M 12	226	5,000
DM C28 8 168	6	M 20	273	5,000
DM C28 8 220	8	M 20	309	12,500
DM C28 8 273	10	M 20	362	12,500
DM C28 8 323	12	M 24	420	15,000
DM C28 8 355	14	M 24	470	15,000
DM C28 8 406	16	M 32	510	35,000
DM C28 8 457	18	M 32	551	35,000
DM C28 8 508	20	M 36	591	35,000
DM C28 8 610	24	M 36	670	50,000



Roller Stand



Part No.	D	L	B	B2	h	d1	k	k1	Fa,z
	(")	(mm)	(mm)	(mm)	(mm)	(mm)	(mm)	(mm)	(N)
DMC277060100	2 / 2 1/2 / 3 / 3 1/2	135	120	150	93	16	115	100	5,500
DMC277115168	4 / 5 / 6	135	160	150	152	16	115	100	13,000
DMC277219273	8 / 10	165	215	215	215	20	160	110	17,500
DMC277323355	12 / 14	200	275	275	275	20	220	145	35,000
DMC277406508	16 / 18 / 20	215	310	310	310	24	245	150	52,500
DMC277558609	22 / 24	240	340	340	340	24	265	165	65,000
DMC277660762	26 / 28 / 30	270	430	430	430	28	345	185	84,500
DMC277 914	30	300	500	500	540	28	215	215	105,000

FEATURES & BENEFITS

For support of pipe where horizontal movement due to expansion and contraction may occur

Material bracket: steel

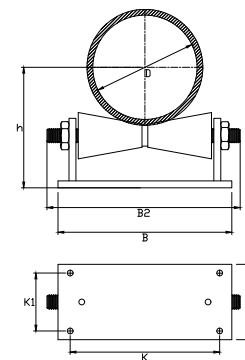
Roller: solid steel shaft

Electrogalvanized as per ASTM B 633

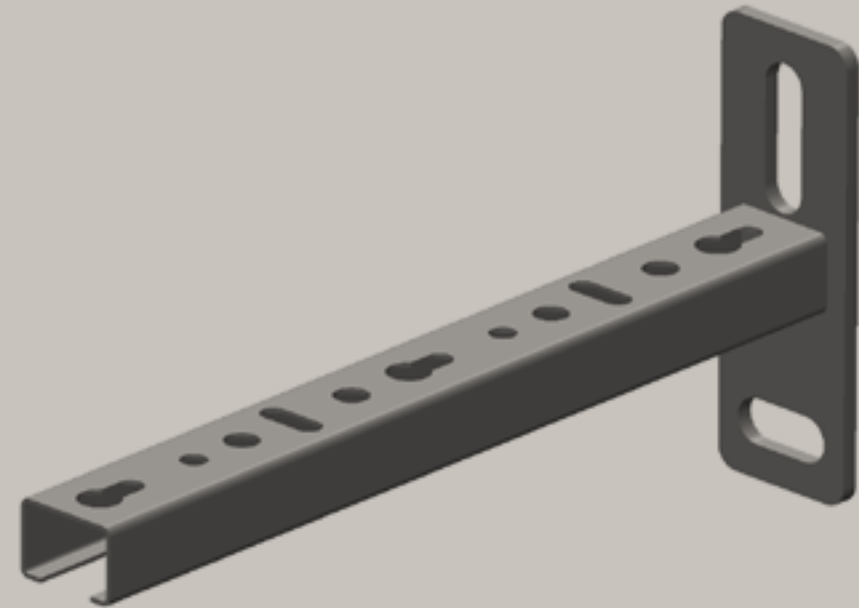
Standards (SC3), BS 1706 FE/ZN 12

Designed to meet BS476-1: 1974; MSS

Standard SP-58, type 44 and SP-69



BIS RapidRail Cantiliver Arms(BUP1000)



FEATURES & BENEFITS

Wall plate with welded C-profile

Perfectly suitable for hanging to the ceiling

Slots at 90° to each other to simplify fixing

CO2 welded - Material: steel

Unique perforation on rail WM15, WM30 and rail WM35 allows for hanging on both sides

Allowed load (Fa, z) check loading tables

A continuous graduated centimeter scale on one side

Product is part of the BIS Ultra Protect® 1000 system

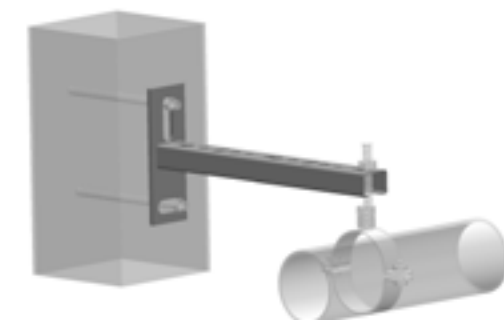
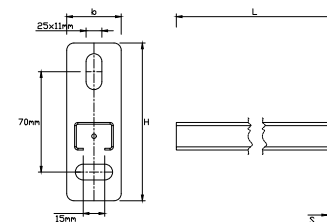
Suitable for in- and outdoor applications

Stands min. 1.000 hours salt spray test

(max. 5% red rust) according to ISO 9227

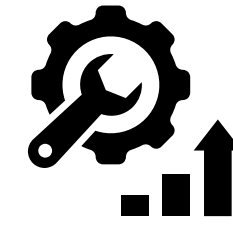


Part No.	L (mm)	H	From Rail b x s (mm)	Pack 1
660 3 015 150 mm	110	WMO-27 x 18	38 x 4	20
660 3 019 200 mm	110	WMO-27 x 18	38 x 4	60



Hot Dip Galvanized, Stainless Steel, and Electrical Option available on request.
With connection nut M8/M10, M10/M12 available on request.
With M6 Side Nuts available on request.

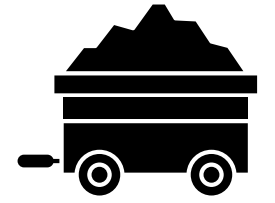
OUR PRODUCTION ARM



Leading
Manufacturer And
Fabricator



Region
Exposure



100%
Raw Material

0.5

Harmony Manufacturing is a leading manufacturer and fabricator of light steel construction products in the region, servicing the construction sector.

Products of Harmony Manufacturing are manufactured from quality raw material according to the relevant international standards to meet all kinds of construction projects requirements.



Health And Safty

The Factory Management regard the health and safety of the employees, clients and all others that may be affected by their operations to be of a major importance.

In support of this, the management promotes health and safety throughout the factory's operations and endeavor to engender a positive attitude in all employees towards the prevention of accidents and maintenance of healthy working arrangements.



The Factory satisfies the requirements of the Health, Safety and related legislation by setting out the responsibilities of all levels of staff and the arrangements for carrying out those responsibilities and in particular do what is reasonably practicable to:

1. Maintains safe & healthy working conditions.
2. Ensures that all facilities and equipment are safe and properly maintained.
3. Provides products that can be applied and used safely and without risk to health.
4. Provides and maintain working procedures, that are safe and without risk to health, throughout the its operations in respect of: The use, handling, storage, transports and disposal of materials and substances, The use of factory equipment , Potential emergency situations, including first aid & fire and escape of substances.
5. Ensure the competence of employees by keeping trained and up tp date with the latest in the industry both technically and in terms of safety.

Social Responsibility

Being socially responsible is a part of who we are and how we do our business. We aim to provide useful products and services, to provide jobs and development opportunities for our communities, and satisfaction through meaningful work.

We make a difference by acting on the values and principles of our societies and we inspire others to do at Harmony, we anticipate and reduce threats caused by environmental changes or natural disasters, and we are well adapted to significant social changes. We contribute to a more sustainable society by means of value and support to our consumers & our supply chains.



WE ARE KEEN TO IDENTIFY WAYS THEY CAN IMPROVE OUR IMPACTS ON THE PEOPLE AND PLACES WE WORK.

- Organizational governance: We promote accountability and transparency at all levels.
- Human care: We treat individuals with respect; and make efforts to help members of vulnerable groups.
- Labor practices: We provide just, safe and favorable conditions to workers
- Environment: At Harmony, we identify and improve environmental impacts of our operations, including the resource use of natural resources and waste disposal.

At Harmony, we are committed to continuous improvement ongoing learning, process review and innovative thinking that foster new initiatives; and better practices. Our environmental programs evolve to meet today's changing needs while protecting resources for future generations.

CONTACT INFORMATION

www.harmony-egy.com
info@harmony-egy.com

Plot 230, Third Industrial Zone, 6th of October, Giza, Egypt
المنطقة الصناعية الثالثة، القطعة ٢٣٠، مدينة 6 أكتوبر، الجيزة، مصر

+2 0111 521 3111
+2 0121 0 11 2633