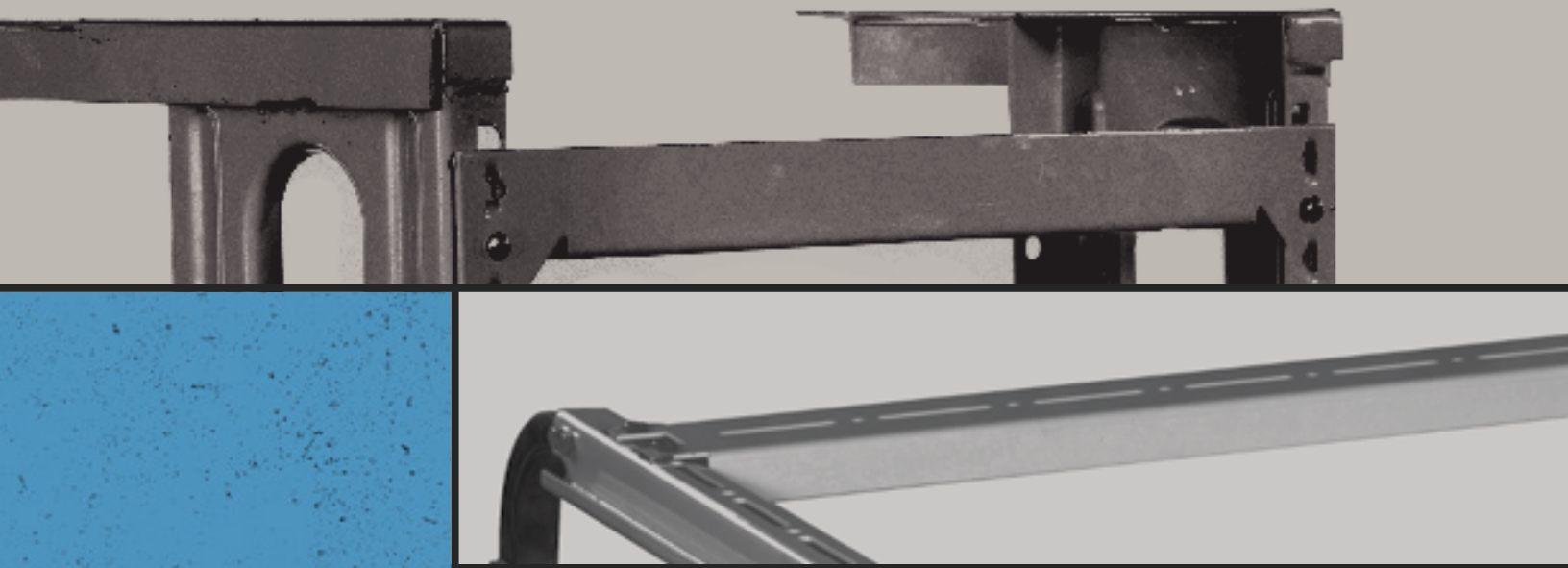


Products Catalogue



**INSULATION
ACCESOIRES**

 **HARMONY**[®]
SUPPLIER

QUALITY
EMPOWERS
YOU.

ABOUT HARMONY

0.1

Harmony Group is the national market leader in several sheet metal products and successfully develops new types of applications for sheet metal that can be used in various fields. The privately owned company based in Giza, Egypt, develops and manufactures high specialized products for different home appliances products.

The Factory is located in the 3rd industrial zone, 6th of October, Giza, Egypt. Harmony's facility covers a manufacturing area of 2000 m² where more than 250 hard working employee get the work done. Combining decades of technical experience with modern management. Harmony is constantly expanding its business.

CERTIFICATION

CERTIFICATES

ISO 9001:2015



ISO 14001:2015



Scan this QR Code with smartphone to verify the certificate

CERTIFICATE OF REGISTRATION



This is to certify that:

HARMONY
(ALAA OSAMA MAHMOUD AND HIS PARTNERS)

PLOT 230, THIRD INDUSTRIAL ZONE,
6TH OF OCTOBER, GIZA - EGYPT

Additional Site:
1, NEW MARWA BUILDING, AHMED TAYSEER STREET,
NASR CITY, EGYPT

the management system of the above organisation has been assessed and found to comply with the requirements of the management system standards detailed below

STANDARD

ISO 14001:2015

Environmental Management System

Certification Scope

Manufacturing of All Steel and Construction and Supports for Pipes and Process Components Products and Sheet Metal Fabrication.
Design, Supply, Installation, Testing, Commissioning & After Sales Service of All Types of HVAC (Heating, Ventilation and Air-Conditioning) Systems.
Design, Supply, Installation, Testing & Commissioning of All Types of Fire-Fighting Systems.

Certification Calendar

Certificate Number IAS2612144669	Date of Registration 26-Dec-2022	Validity **Validity of this certificate is subject to successful and timely completion of the annual surveillance audit.
Client ID HA2086	Valid From 26-Dec-2022	Note¹ : Certification cycle expiry date of this certificate is - 25-Dec-2025.
Revision No. 00	Valid Until 25-Dec-2023	Note² : Surveillance 01 will be due in the month of Nov-2023 and Surveillance 02 will be due in the month of Nov-2024.

**This certificate remains the property of SAGACI and shall have to be returned back when it has ceased to be valid, for whatever reason.
*Information about this certificate can be inquired at the official website of certification (www.sagaciert.com)



Authorized Signatory





ACCREDITED
Management System
Certification Body
19011

SAGACI CERTIFICATIONS PRIVATE LIMITED
www.sagaciert.com

This certificate has been issued by Sagar Certifications Pvt. Ltd., B-1, 2, Block 19, Sector 19, Gurgaon, Haryana, India. It is valid only for the activities covered by the scope of the certificate. Further clarification regarding the scope of this certificate and verification of the certificate is available through SAGACI or www.sagaciert.com.
Phone: 011-43692111, Email: info@sagaciert.com, Web: www.sagaciert.com

ISO 45001:2018



Scan this QR Code with smartphone to verify the certificate

CERTIFICATE OF REGISTRATION



This is to certify that:

HARMONY
(ALAA OSAMA MAHMOUD AND HIS PARTNERS)

PLOT 230, THIRD INDUSTRIAL ZONE,
6TH OF OCTOBER, GIZA - EGYPT

Additional Site:
1, NEW MARWA BUILDING, AHMED TAYSEER STREET,
NASR CITY, EGYPT

the management system of the above organisation has been assessed and found to comply with the requirements of the management system standards detailed below

STANDARD

ISO 45001:2018

Occupational Health & Safety Management System

Certification Scope

Manufacturing of All Steel and Construction and Supports for Pipes and Process Components Products and Sheet Metal Fabrication.
Design, Supply, Installation, Testing, Commissioning & After Sales Service of All Types of HVAC (Heating, Ventilation and Air-Conditioning) Systems.
Design, Supply, Installation, Testing & Commissioning of All Types of Fire-Fighting Systems.

Certification Calendar

Certificate Number IAS2612454470	Date of Registration 26-Dec-2022	Validity **Validity of this certificate is subject to successful and timely completion of the annual surveillance audit.
Client ID HA2086	Valid From 26-Dec-2022	Note¹ : Certification cycle expiry date of this certificate is - 25-Dec-2025.
Revision No. 00	Valid Until 25-Dec-2023	Note² : Surveillance 01 will be due in the month of Nov-2023 and Surveillance 02 will be due in the month of Nov-2024.

**This certificate remains the property of SAGACI and shall have to be returned back when it has ceased to be valid, for whatever reason.
*Information about this certificate can be inquired at the official website of certification (www.sagaciert.com)



Authorized Signatory





ACCREDITED
Management System
Certification Body
19011

SAGACI CERTIFICATIONS PRIVATE LIMITED
www.sagaciert.com

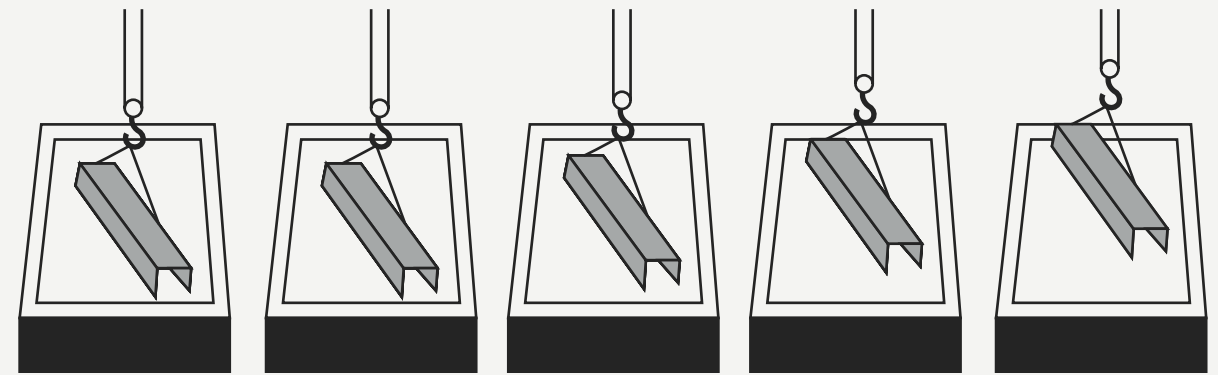
This certificate has been issued by Sagar Certifications Pvt. Ltd., B-1, 2, Block 19, Sector 19, Gurgaon, Haryana, India. It is valid only for the activities covered by the scope of the certificate. Further clarification regarding the scope of this certificate and verification of the certificate is available through SAGACI or www.sagaciert.com.
Phone: 011-43692111, Email: info@sagaciert.com, Web: www.sagaciert.com

Galvanization Methodology.

Hot-dip galvanizing is the process of immersing iron or steel in a bath of molten zinc to produce a corrosion resistant, multi-layered coating of zinc-iron alloy and zinc metal. While the steel is immersed in the zinc, a metallurgical reaction occurs between the iron in the steel and the molten zinc. This reaction is a diffusion process, so the coating forms perpendicular to all surfaces creating a uniform thickness throughout the part.

FIRST STEP

SURFACE PREPARATION



Caustic Cleaning

Rinsing

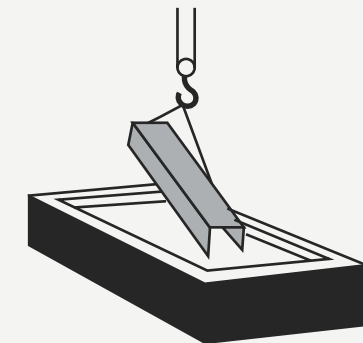
Pickling

Rinsing

Flux Solution

SECOND STEP

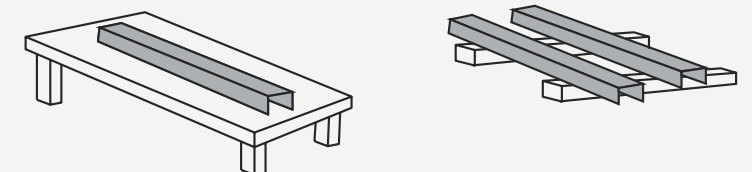
GALVANIZING Molten Zinc Bath



FINAL STEP

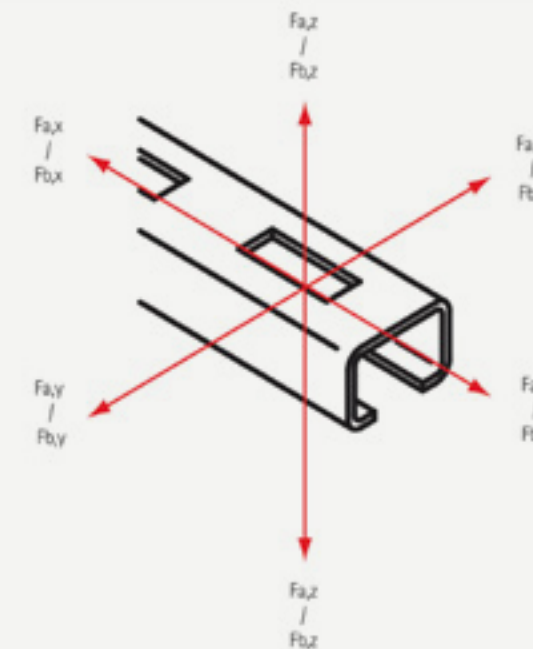
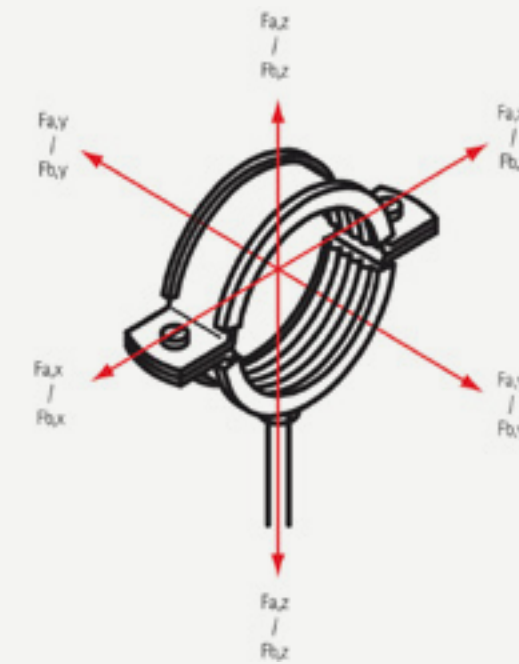
INSPECTION

Cooling and
Quality Assurance



Maximum Allowed Load.

From most of our products a maximum allowed load is included in the article tables. Stand values are determined by the measuring method described in the testing prescriptions RAL-GZ 655, which is set up by the 'Gütegemeinschaft Rohrbefestigung!'. If the product is provided with the 'RAL-Gütezeichen', the test results are checked by an independent testing institute.



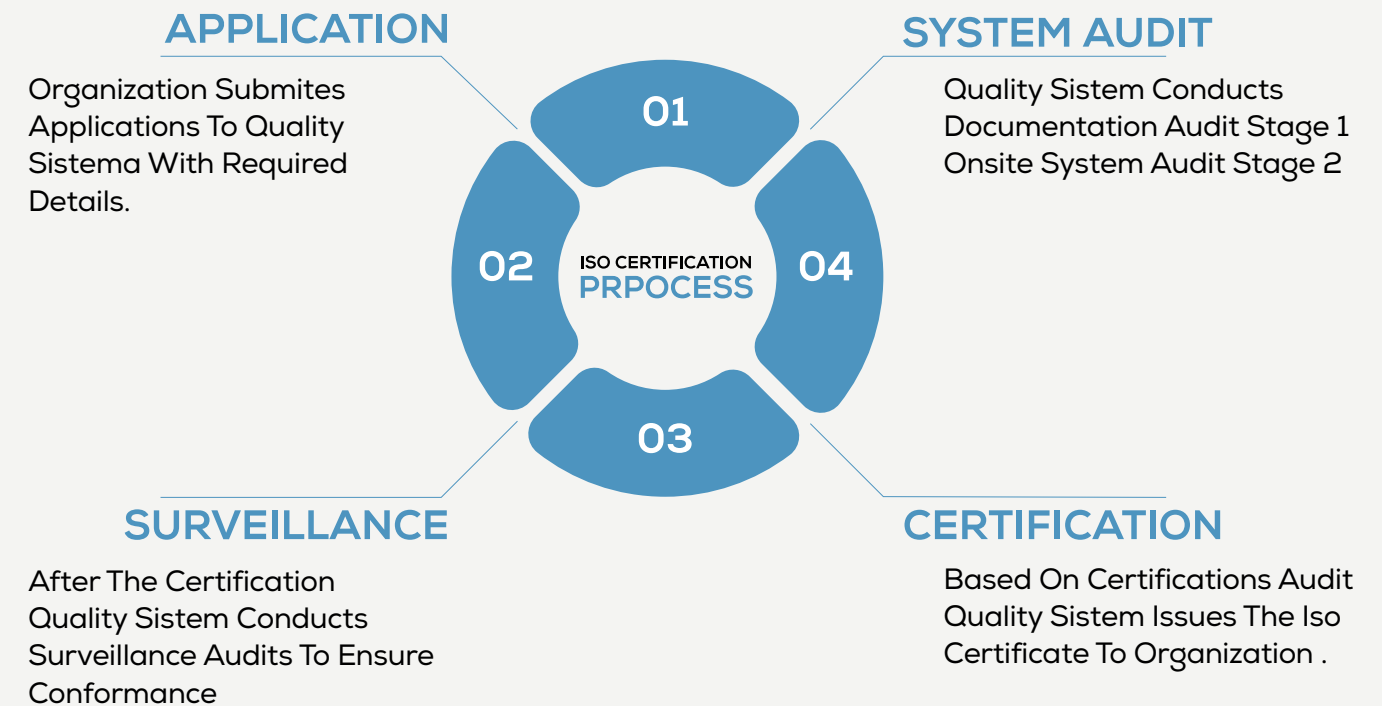
Force Directions (F) x, y, and z (at 20°C)

Fa = Maximum Allowe Load
 Fb = Breaking Load
 For plastic clamps the breaking load is included.

Commitment To Quality

Our commitment to quality is clearly revealed in the way we do our business; our processes, our close interaction with our clients as well By delivering superior products tailored to the specific construction needs, ambitious solutions, and an outstanding as the strict product inspection procedures.

To achieve this, we have implemented quality systems & processes that are continually being improved to satisfy our customer's needs



INSULATION ACCESSORIES

4.0

INSULATION ACCESSORIES

1.1

Insulation Support

- 1.1.1 BISOFIX PIR20
- 1.1.2 BISOFIX PIR30
- 1.1.3 BISOFIX PIR40
- 1.1.4 BISOFIX PIR50

PAGE 17



1.2

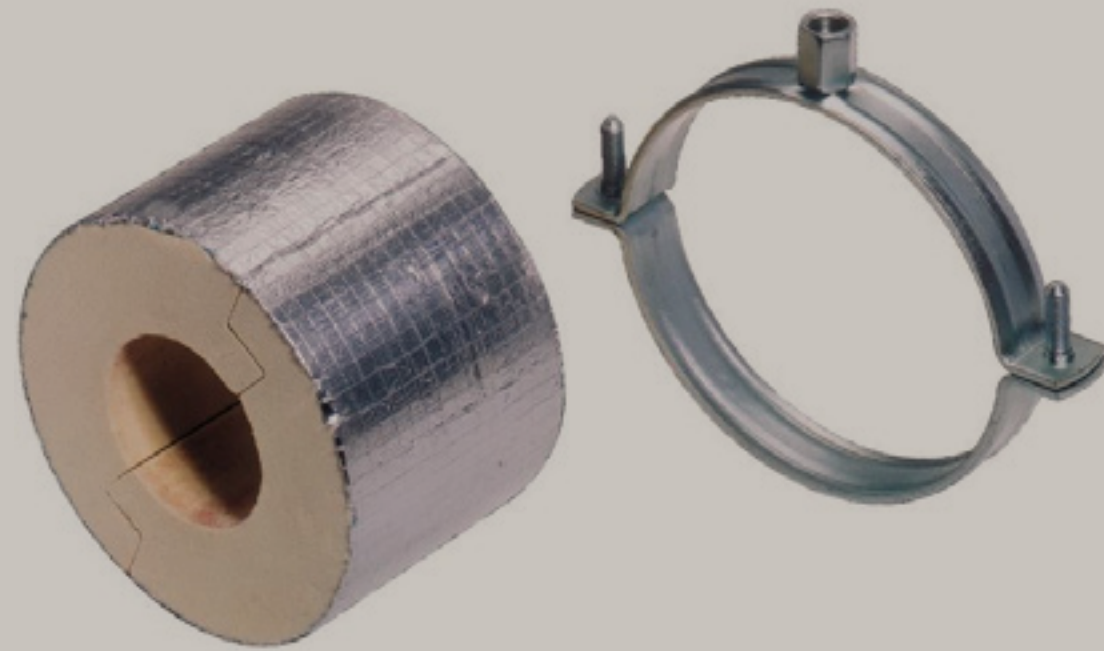
Rupper Support Insert

- 1.2.1 Steel Pipe Rubber Support
- 1.2.2 Copper Pipe Rubber Support
- 1.2.3 Insulation Protection Shield
- 1.2.4 Pipe Covering Protection Saddle-1
- 1.2.5 Pipe Covering Protection Saddle-2

PAGE 25



BISOFIX PIR20



FEATURES & BENEFITS

Insulation shell (Thick. 20 mm) with pipe clamp BIS Biofix® 300

For fixing of thermal isolated pipe of steel, copper or stainless steel

Combination with hard insulation material

A vapor sealed connection with pipe

insulation can be made by aluminum tape

No CFC, HCFC, formaldehyde or cadmium

Size & weight are tuned to pipe weight

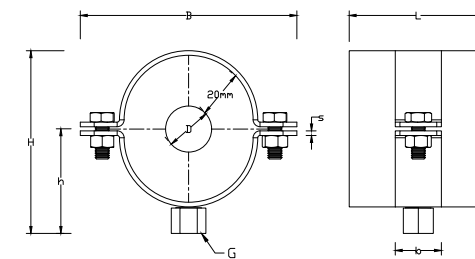
Material: clamp of steel; insulation shell PIR thermally hardening foam with a moisture

proof covering of glass fiber & aluminum foil

Excellent thermal and mechanical properties

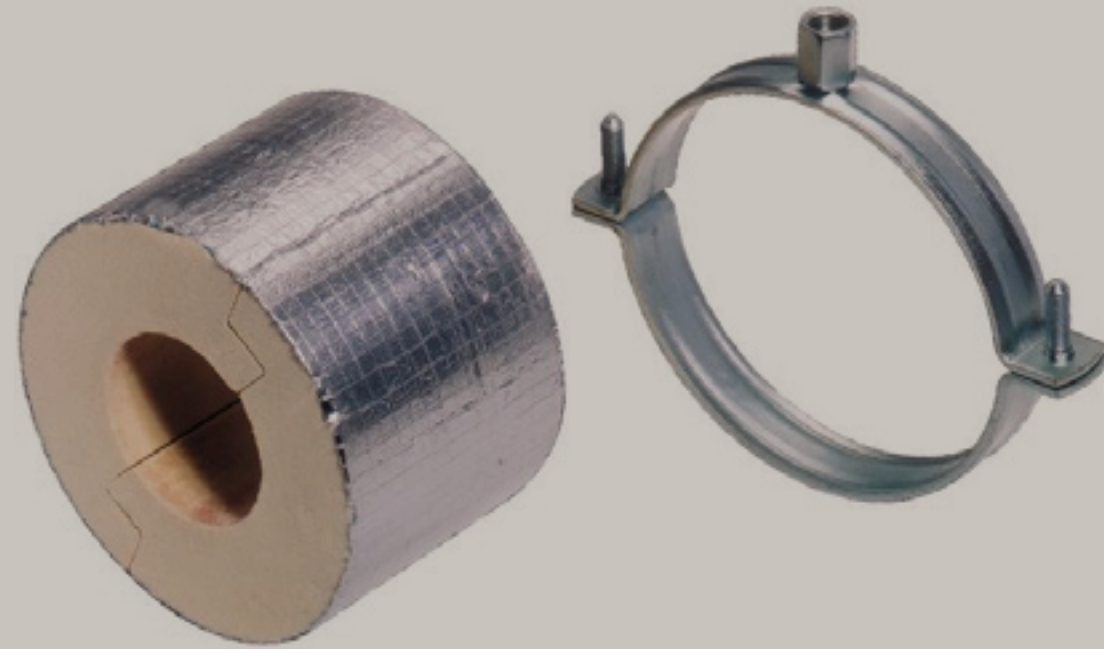
clamp: zinc plated

Part No.	D (mm)	D (")	DN (mm)	G	L	B (mm)	H (mm)	h (mm)	Fa,z
221 2 015	15,0 - 16,0	-	-	M8/10	75 mm	92	76	46	160
221 2 017	17,2 - 18,0	3/8	10	M8/10	75 mm	92	76	46	170
222 2 021	21,3 - 22,0	1/2	15	M8/10	75 mm	91	81	48	180
223 2 027	26,9 - 28,0	3/4	20	M8/10	75 mm	102	91	53	200
224 2 033	33,7 - 35,0	1	25	M8/10	75 mm	109	98	57	220
225 2 042	42,0	1 1/4	32	M8/10	75 mm	117	104	60	380
226 2 048	48,3	1 1/2	40	M8/10	75 mm	123	123	63	300



Hot Dip Galvanized, Stainless Steel, and Electrical Option available on request.
With connection nut M8/M10, M10/M12 available on request.
With M6 Side Nuts available on request.

BISOFIX PIR30



FEATURES & BENEFITS

Insulation shell (Thick. 30 mm) with pipe clamp BIS Biofix® 300

For fixing of thermal isolated pipe of steel, copper or stainless steel

Combination with hard insulation material

A vapor sealed connection with pipe

insulation can be made by aluminum tape

No CFC, HCFC, formaldehyde or cadmium

Size & weight are tuned to pipe weight

Material: clamp of steel; insulation shell PIR

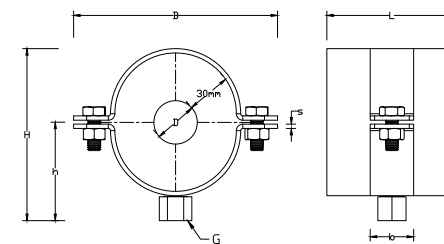
thermally hardening foam with a moisture

proof covering of glass fiber & aluminum foil

Excellent thermal and mechanical properties

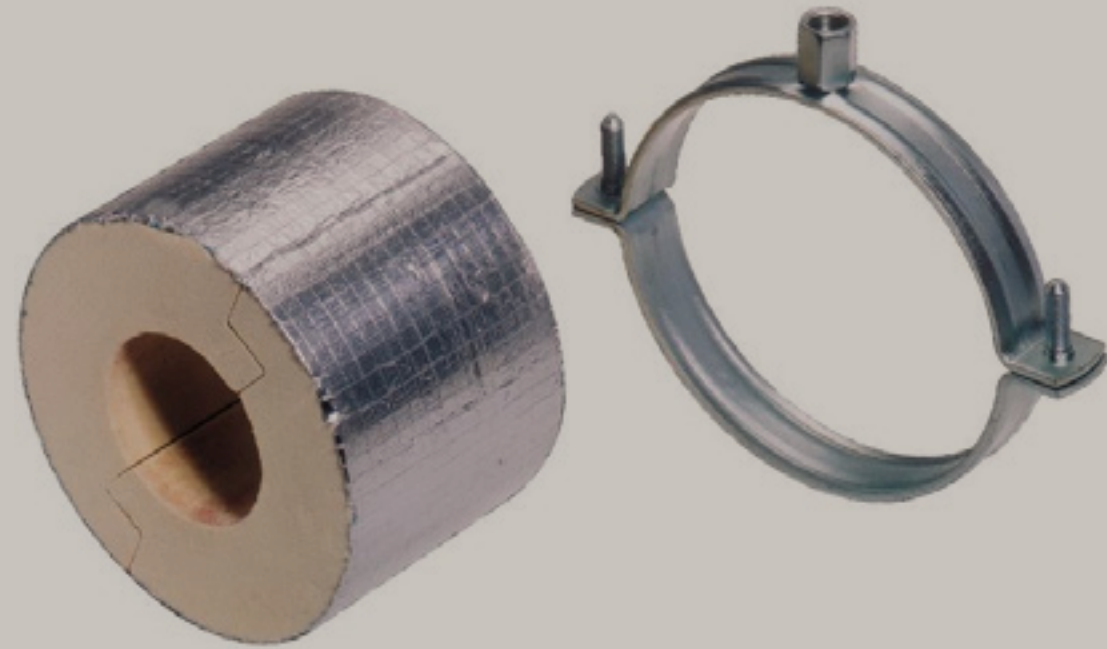
clamp: zinc plated

Part No.	D (mm)	D (")	DN (mm)	G	L	B (mm)	H (mm)	h (mm)	Fa,z (N)	Pack1
221 3 015	15,0 - 16,0	-	-	M8/10	75 mm	109	99	56	170	12
221 3 017	17,2 - 18,0	3/8	10	M8/10	75 mm	109	99	57	190	12
221 3 021	21,3 - 22,0	1/2	15	M8/10	75 mm	117	102	59	230	12
221 3 027	26,9 - 28,0	3/4	20	M8/10	75 mm	123	108	61		300/12
221 3 0333	3,7 - 35,0	1	25	M8/10	75 mm	129	113	64		320/12
221 3 042	42,0	1 1/4	32	M8/10	75 mm	138	123	69	350	12
221 3 048	48,3	1 1/2	40	M8/10	75 mm	144	128	72	370	12
221 3 054	54,0	-	-	M8/10	75 mm	153	138	77	380	12
221 3 057	56,0 - 57,0	-	-	M8/10	75 mm	153	138	77		390/12
221 3 060	60,3	2	50	M8/10	75 mm	160	144	80	410	12
221 3 064	63,5 - 64,0	-	-	M8/10	75 mm	160	144	80		420/12
221 3 076	76,1	2 1/2	65	M8/10	75 mm	178	163	89	460	24
221 3 089	88,9	3	80	M8/10	75 mm	187	171	93	500	24
221 3 108	108,0	-	-	M8/10	75 mm	204	197	102	620	18
221 3 114	114,3	4	100	M8/10	100 mm	233	200	108	1.37	8
221 3 133	133,0	-	-	M8/10	100 mm	256	223	119	1.52	8
221 3 140	139,7	5	125	M8/10	100 mm	256	223	119	1.57	8
221 3 159	159,0	-	-	M8/10	100 mm	273	242	128	1.72	8
221 3 168	168,3	6	150	M10/12	100 mm	303	248	129	2.72	8
221 3 219	219,1	8	200	M16	150 mm	358	306	160	4.21	6
221 3 273	273,1	10	250	M16	150 mm	421	352	181	5.02	6
221 3 324	323,9	12	300	M16	150 mm	465	410	212	5.79	6



Hot Dip Galvanized, Stainless Steel, and Electrical Option available on request.
With connection nut M8/M10, M10/M12 available on request.
With M6 Side Nuts available on request.

BISOFIX PIR40



FEATURES & BENEFITS

Insulation shell (thickness 40 mm) with pipe clamp BIS Biofix® 300

For fixing of thermal isolated pipe of steel, copper or stainless steel

To be used in combination with hard insulation material

Clamp: Zinc Plated

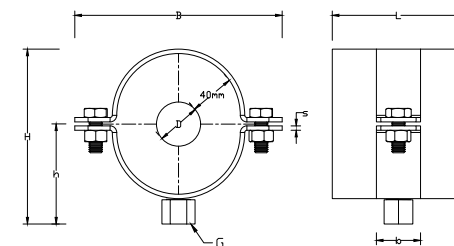
A vapor sealed connection with pipe insulation can easily be made by use of aluminum tape

From pipe Ø 273 mm pipe support

Does not contain CFC, HCFC, formaldehyde or cadmium

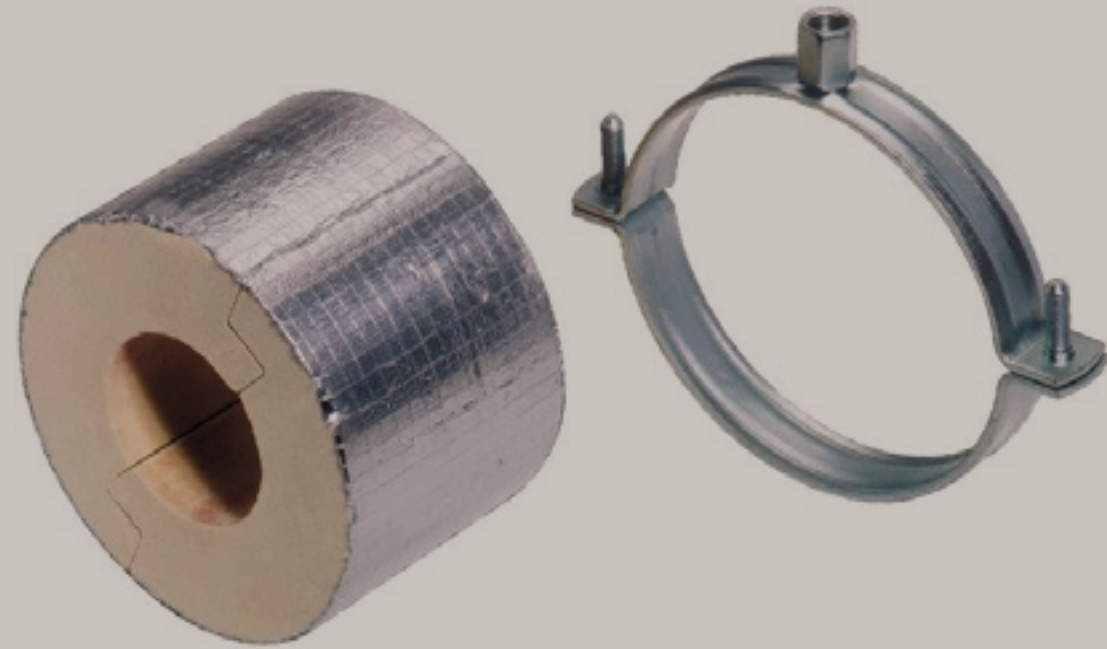
excellent thermal & mechanical properties

Part No.	D (mm)	D (")	DN (mm)	G	L	B (mm)	H (mm)	h (mm)	Fa.z (N)	Pack.1
221 4 060	60,3	2	50	M8/10	75 mm	178	163	89	470	24
221 4 070	63,5 - 64,0	-	-	M8/10	75 mm	187	171	93	510	24
221 4 076	76,1	2 1/2	65	M8/10	75 mm	191	175	95	530	24
221 4 089	88,9	3	80	M8/10	75 mm	203	187	101	620	18
221 4 108	108,0	-	-	M8/10	75 mm	246	213	114	690	10
221 4 114	114,3	4	100	M8/10	100 mm	256	223	119	153	12
221 4 133	133,0	-	-	M8/10	100 mm	273	240	128	167	8
221 4 140	139,7	5	125	M8/10	100 mm	273	258	130	173	8
221 4 159	159,0	-	-	M16	100 mm	273	244	134	2.85	24
221 4 168	168,3	6	150	M16	100 mm	306	266	138	2.96	24
221 4 219	219,1	8	200	M16	150 mm	388	333	174	4.15	6
221 4 273	273,1	10	250	M16	150 mm	436	381	198	5.32	6
221 4 219	323,9	12	300	M16	150 mm	486	431	223	6.09	1
221 4 273	406,4	16	400	M16	150 mm	569	514	264	7.33	1
221 4 324										
221 4 324										



Hot Dip Galvanized, Stainless Steel, and Electrical Foption available on request.
With connection nut M8/M10, M10/M12 available on request.
With M6 Side Nuts available on request.

BISOFIX PIR50



FEATURES & BENEFITS

Insulation shell (thickness 50 mm) with pipe clamp BIS Biofix® 300

For fixing of thermal isolated pipe of steel, copper or stainless steel

To be used in combination with hard insulation material

Clamp: Zinc Plated

A vapor sealed connection with pipe insulation can easily be made by use of

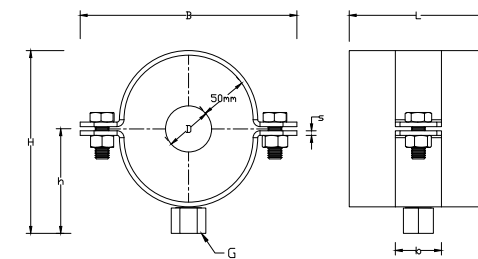
aluminum tape

From pipe Ø 273 mm pipe support

Does not contain CFC, HCFC, formaldehyde or cadmium

excellent thermal & mechanical properties

Part No.	D (mm)	D (")	DN (mm)	G	L (mm)	B (mm)	H (mm)	h (mm)	Fa.z (N)	Pack1
221 5 114	114,3	4	100	M8/10	100 mm	273	240	128	2	8
221 5 133	133,0	-	-	M16	100 mm	272	251	131	2.78	24
221 5 140	139,7	5	125	M16	100 mm	303	259	135	2.86	24
221 5 159	159,0	-	-	M16	100 mm	328	277	143	3.09	10
221 5 168	168,3	6	150	M16	100 mm	348	291	151	3	10
221 5 219	219,1	8	200	M16	150 mm	347	393	181	4.81	6
221 5 273	273,1	10	250	M16	150 mm	450	395	205	5.62	6
221 5 324	323,9	12	300	M16	150 mm	501	446	230	6.39	1



Hot Dip Galvanized, Stainless Steel, and Electrical Option available on request.
With connection nut M8/M10, M10/M12 available on request.
With M6 Side Nuts available on request.

Rubber Support Insert for steel Pipes



FEATURES & BENEFITS

Used at the supporting points of insulated pipes to prevent crushing of insulation.

Inherently superior to wood.

Density: 1,100 – 1,400 kg/m³

Thermal conductivity: 0.16 w/m Temperature

Designed to meet BS3974-1:1974

Resistance from -20°C to +110°

Tongue and groove design.

Steel reinforcements for higher sizes.

Standard width

1/2" to 2": 25mm

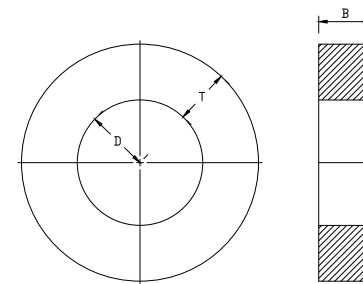
2 1/2" to 5": 38mm

6" and above: 50mm

Non-Standard widths are available.



PIPE SIZE	DN	D (mm)	B	T (RSI THICKNESS IN MILLIMETER)										
				13	19	25	32	38	50	65	75			
1/2"	15	21.3	25	DMRSI121325	DMRSI1213925	DMRSI122525	DMRSI123225	DMRSI127525						
3/4"	20	26.7	25	DMRSI341325	DMRSI341925	DMRSI342525	DMRSI343225	DMRS347525						
1	25	33.4	25	DMRSI11325	DMRSI11925	DMRSI12525	DMRSI123325	DMRSI17525						
1 1/4"	32	42.1	25	DMRSI1141325	DMRSI1141925	DMRSI1142525	DMRSI1143325	DMRSI1147525						
1 1/2"	40	48.2	25	DMRSI1121325	DMRSI1121925	DMRSI1122525	DMRSI1123225	DMRSI1127525						
2	50	60.3	25	DMRSI21325	DMRSI21925	DMRSI2123238	DMRSI2123238	DMRS27525						
2 1/2"	65	73	38	DMRSI212338	DMRSI2121938	DMRSI32538	DMRSI33238	DMRS2127538						
3"	80	88.9	38	DMRSI31338	DMRSI31938	DMRSI3122538	DMRSI3123238	DMRS37538						
3 1/2"	90	101.6	38	DMRSI3121338	DMRSI21938	DMRSI42538	DMRSI43238	DMRS3127538						
4"	100	114.3	38	DMRSI41338	DMRSI41938	DMRSI52538	DMRSI53238	DMRS47538						
5"	125	141.3	38	DMRSI51338	DMRSI51938	DMRSI62550	DMRSI63250	DMRS57538						
6"	150	168.3	50	DMRSI61350	DMRSI61938	DMRSI82550	DMRSI83250	DMRS67550						
8"	200	219.1	50	DMRSI81350	DMRSI71938	DMRSI82550	DMRSI83250	DMRS87550						
10"	250	278	50	-	-	DMRSI02550	DMRSI03250	DMRS107550						
12"	300	323.8	50	-	-	DMRSI22550	DMRSI23250	DMRS127550						
14"	350	355.6	50	-	-	DMRSI42550	DMRSI43250	DMRS147550						
16"	400	406.4	50	-	-	DMRSI62550	DMRSI63250	DMRS167550						
18"	450	457.2	50	-	-	-	DMRSI83250	DMRS187550						
20"	500	508	50	-	-	-	DMRSI203250	DMRS207550						
24"	600	609.6	50	-	-	-	DMRSI243250	DMRS247550						



Hot Dip Galvanized, Stainless Steel, and Electrical Option available on request.
With connection nut M8/M10, M10/M12 available on request.
With M6 Side Nuts available on request.

Rubber Support Insert for Copper Pipes



FEATURES & BENEFITS

Used at the supporting points of insulated pipes to prevent crushing of insulation.

Inherently superior to wood.

Density: 1,100 – 1,400 kg/m³

Thermal conductivity: 0.16 w/m Temperature

Designed to meet BS3974-1:1974

Resistance from -20°C to +110°

Tongue and groove design.

Steel reinforcements for higher sizes.

Standard width

1/2" to 2": 25mm - 2 1/2" to 5": 38mm

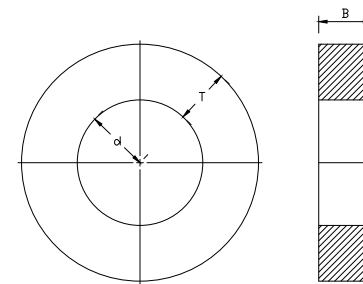
6" and above: 50mm

Non-Standard widths are available. Great

resistance to deuteriation/distortion.

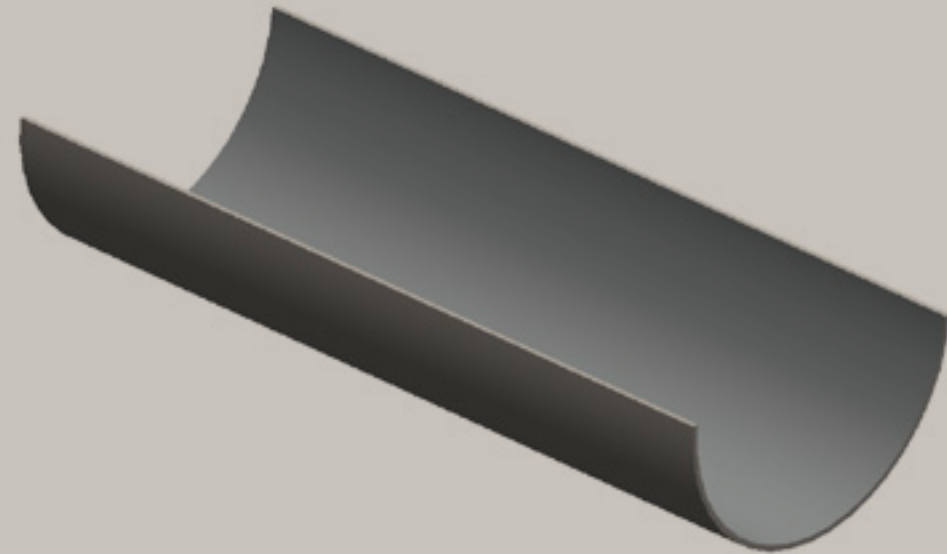


COPPER PIPE	d (mm)	B	T (RSI THICKNESS IN MILLIMETER)					
			13	19	25	32	38	50
16	16	25	DMRSI 161325	DMRSI 161925	-	DMRSI 163225	-	DMRSI 165025
22	22	25	DMRSI 121325	DMRSI 121925	DMRSI 122525	DMRSI 123225	DMRSI 123825	DMRSI 125025
28	28	25	DMRSI 341325	DMRSI 341925	DMRSI 342525	DMRSI 343225	DMRSI 343825	DMRSI 345025
35	35	25	DMRSI 11325	DMRSI 11925	DMRSI 12525	DMRSI 13225	DMRSI 13825	DMRSI 15025
42	42	25	DMRSI 1141325	DMRSI 1141925	DMRSI 1142525	DMRSI 1143225	DMRSI 1143825	DMRSI 1145025
54	54	25	DMRSI 541325	DMRSI 541925	DMRSI 542525	DMRSI 543225	DMRSI 543825	DMRSI 545025
67	67	25	DMRSI 671325	DMRSI 671925	DMRSI 672525	DMRSI 673225	DMRSI 673825	DMRSI 675025
76	76	38	DMRSI 2121338	DMRSI 2121938	DMRSI 2122538	DMRSI 2123238	DMRSI 2123838	DMRSI 2125038
108	108	38	DMRSI 1081338	DMRSI 1081938	DMRSI 1082538	DMRSI 1083238	DMRSI 1083838	DMRSI 1085038
133	133	38	DMRSI 1331338	DMRSI 1331938	DMRSI 1332538	DMRSI 1333238	DMRSI 1333838	DMRSI 1335038
160	160	50	DMRSI 1601350	DMRSI 1601950	DMRSI 1602550	DMRSI 1603250	DMRSI 1603850	DMRSI 1605050



Hot Dip Galvanized, Stainless Steel, and Electrical Foption available on request.
With connection nut M8/M10, M10/M12 available on request.
With M6 Side Nuts available on request.

Insulation protection shield



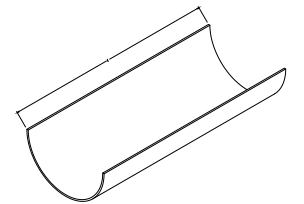
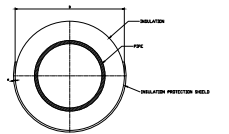
FEATURES & BENEFITS

Used between hanger surface and insulated pipes to prevent crushing of insulation
 Designed to meet MSS Standard SP-58-2002, type 40

Electrogalvanized as per ASTM B 633
 Material: steel

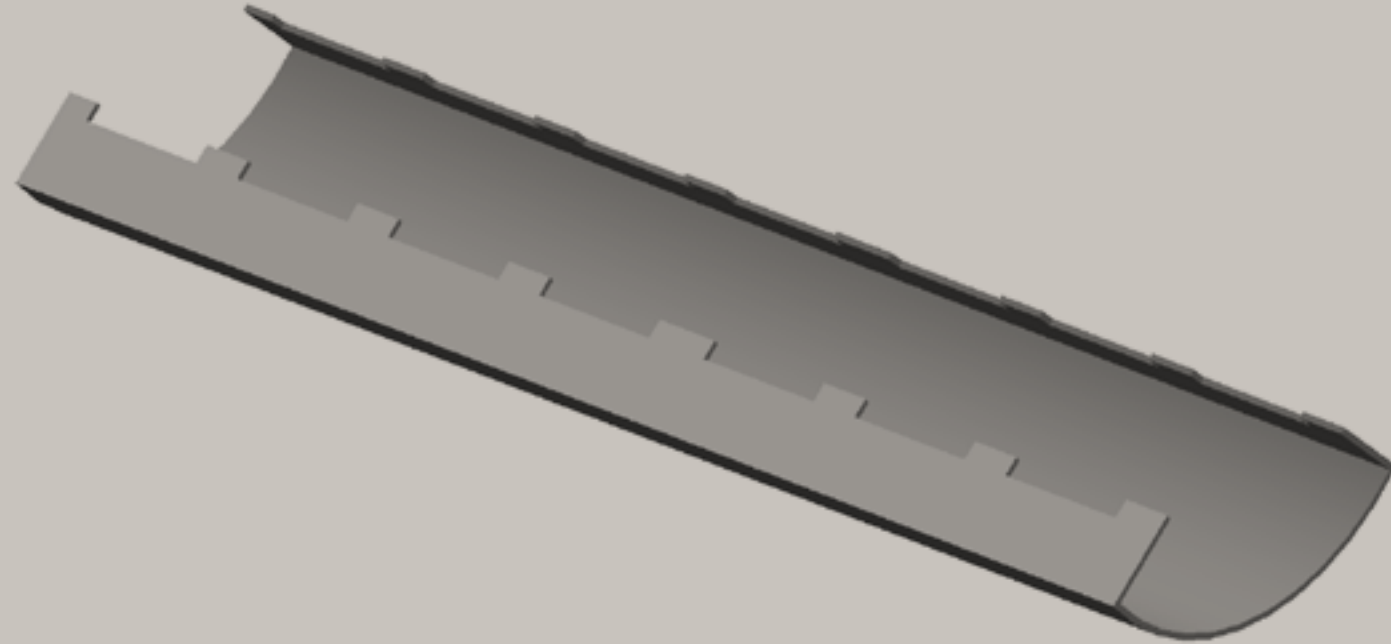
Standards (SC3), BS 1706 FE/ZN 12

Part No.	D (mm)	L	s (mm)	Gauge (mm)	Ø Matching Hanger (")	Ø Matching Hanger (mm)
DMI P S1A	48.2	305 mm	1.22	18	1 1/2	40
DMI P S2A	60.4	305 mm	1.22	18	2	50
DMI P S3A	73.1	305 mm	1.22	18	2 1/2	65
DMI P S4A	88.9	305 mm	1.22	18	3	80
DMI P S5A	101.6	305 mm	1.22	18	3 1/2	90
DMI P S6A	114.3	305 mm	1.22	18	4	100
DMI P S7A	127	305 mm	1.22	18	5	125
DMI P S8A	141.2	305 mm	1.22	18	5	125
DMI P S9A	168.6	305 mm	1.22	16	6	150
DMI P S10A	194	305 mm	1.22	16	8	200
DMI P S11A	219.4	305 mm	1.22	16	8	200
DMI P S10B	194	610 mm	1.52	16	8	200
DMI P S11B	219	610mm	1.52	16	8	200
DMI P S12B	244.8	610mm	1.52	16	10	250
DMI P S13B	273.3	610mm	1.52	16	10	250
DMI P S14C	298.7	610mm	1.91	14	12	300
DMI P S15C	324.1	610mm	1.91	14	12	300
DMI P S16C	355.6	610mm	1.91	14	14	350
DMI P S17C	381	610mm	1.91	14	16	400
DMI P S18C	406.4	610mm	1.91	14	16	400
DMI P S19C	431.8	610mm	1.91	14	18	450
DMI P S20C	457.2	610mm	2.67	12	18	450
DMI P S21C	482.6	610mm	2.67	12	20	500
DMI P S22C	508	610mm	2.67	12	20	500
DMI P S23C	533.4	610mm	2.67	12	24	600
DMI P S24C	558.8	610mm	2.67	12	24	600
DMI P S25C	584.2	610mm	2.67	12	24	600
DMI P S26C	609.6	610mm	2.67	12	24	600
DMI P S27C	635	610mm	2.67	12	30	750
DMI P S28C	660.4	610mm	2.67	12	30	750
DMI P S29C	685.8	610mm	2.67	12	30	750
DMI P S30C	711.2	610mm	2.67	12	30	750
DMI P S31C	736.6	610mm	2.67	12	30	750
DMI P S32C	662	610mm	2.67	12	30	750
DMI P S33C	812.8	610mm	2.67	12	36	900



Hot Dip Galvanized, Stainless Steel, and Electrical Foption available on request.
 With connection nut M8/M10, M10/M12 available on request.
 With M6 Side Nuts available on request.

Pipe covering Protection Saddle -1



FEATURES & BENEFITS

Recommended to be used with insulated pipes

Protects the pipe insulation over pipe lines

Length: 300 mm

Material: steel

Electrogalvanized as per ASTM B 633

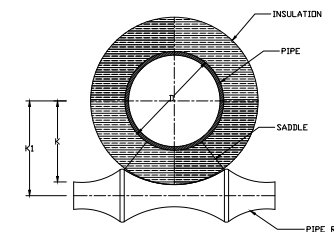
Standards (SC3), BS 1706 FE/ZN 12

Designed to meet MSS Standard SP-

58, SP-69, type 39A and 39B

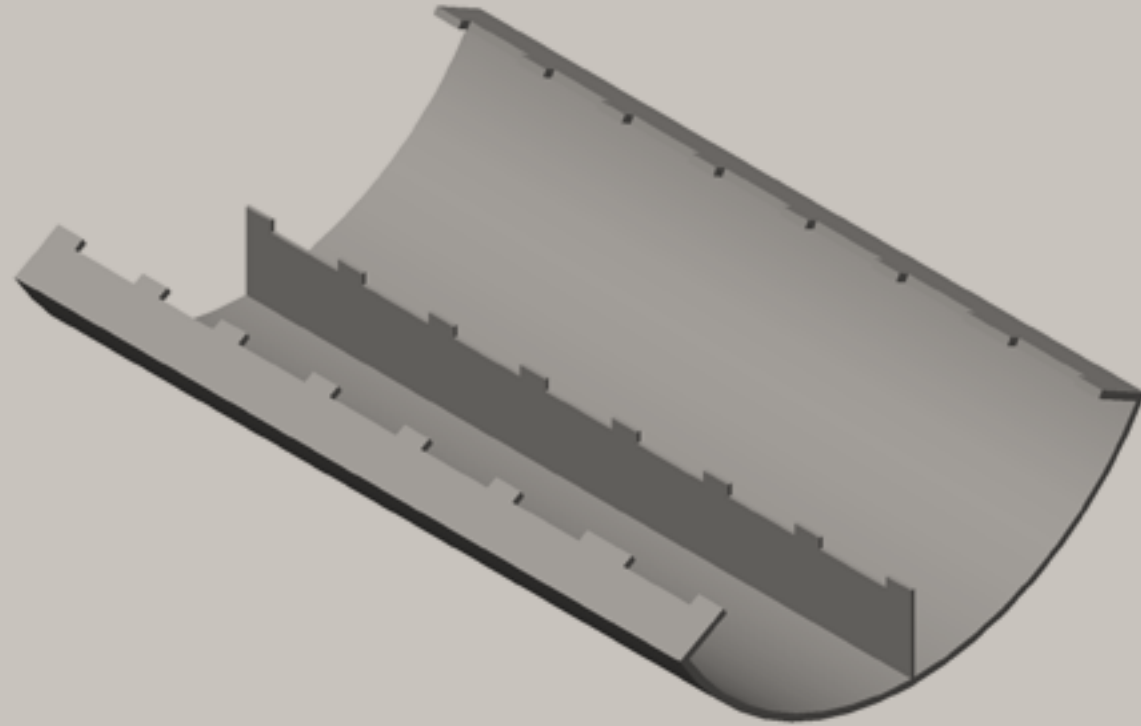


Part No.	D (mm)	D (")	K (mm)	K1 (mm)	Fa.z (N)	Insulation Thickness (mm)	Matching Roller Chair
DM PPS2 5-25	33.4	1	47	62	3,500	25	DMC166090
DM PPS2 5-50	33.4	1	73	62	3,500	50	DMC166140
DM PPS3 2-25	42	1 ¼	50	64	3,500	25	DMC166090
DM PPS3 2-50	42	1 ¼	76	70	3,500	50	DMC166140
DM PPS4 0-25	48	1 ½	54	72	3,500	25	DMC166090
DM PPS4 0-50	48	1 ½	80	102	3,500	50	DMC166140
DM PPS5 0-25	60	2	60	80	3,500	25	DMC166115
DM PPS5 0-50	60	2	86	111	3,500	50	DMC166168
DM PPS5 0-75	60	2	111	141	3,500	75	DMC166219
DM PPS6 5-25	73	2 ½	68	90	6,000	25	DMC166140
DM PPS6 5-50	73	2 ½	98	126	6,000	50	DMC166175
DM PPS6 5-75	73	2 ½	119	149	6,000	75	DMC166220
DM PPS7 5-25	90	3	77	99	6,000	25	DMC166140
DM PPS7 5-50	90	3	103	131	6,000	50	DMC166175
DM PPS7 5-75	90	3	128	164	6,000	75	DMC166273
DM PPS100-25	115	4	89	114	6,000	25	DMC166168
DM PPS100-50	115	4	115	145	6,000	50	DMC166219
DM PPS100-75	115	4	140	176	6,000	75	DMC166273
DM PPS125-25	140	5	103	131	9,500	25	DMC166193
DM PPS125-50	140	5	129	165	9,500	50	DMC166273
DM PPS125-75	140	5	154	196	9,500	75	DMC166323
DM PPS150-25	168	6	116	146	9,500	25	DMC166219
DM PPS150-50	168	6	142	178	9,500	50	DMC166273
DM PPS150-75	168	6	167	209	9,500	75	DMC166323



Hot Dip Galvanized, Stainless Steel, and Electrical Foption available on request.
With connection nut M8/M10, M10/M12 available on request.
With M6 Side Nuts available on request.

Pipe covering Protection Saddle -2



FEATURES & BENEFITS

Protects the pipe insulation over pipe lines

Length: 300 mm

material: steel

Designed to meet MSS Standard SP-58, SP-

69, type 39A and 39B

Recommended to be used with

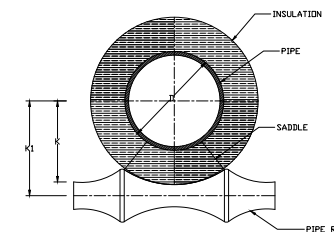
insulated pipes

Electrogalvanized as per ASTM B 633

Standards (SC3), BS 1706 FE/ZN 12

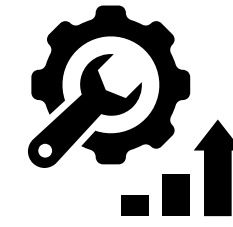


Part No.	D (mm)	D (")	K (mm)	K1 (mm)	Fa.z (N)	Insulation Thickness (mm)	Matching Roller Chair
DM PPS200-25	219	8	143	179	9,500	25	DMC166273
DM PPS200-50	219	8	169	211	9,500	50	DMC166323
DM PPS200-75	219	8	194	244	9,500	75	DMC166355
DM PPS250-25	273	10	170	212	12,500	25	DMC166323
DM PPS250-50	273	10	196	261	12,500	50	DMC166406
DM PPS250-75	273	10	221	288	12,500	75	DMC166457
DM PPS300-25	323	12	196	261	12,500	25	DMC166406
DM PPS300-50	323	12	222	289	12,500	50	DMC166457
DM PPS300-75	323	12	247	322	12,500	75	DMC166508
DM PPS350-25	356	14	212	277	29,000	25	DMC166406
DM PPS350-50	356	14	238	305	29,000	50	DMC166457
DM PPS350-75	356	14	263	239	29,000	75	DMC166508
DM PPS400-50	406	16	263	239	29,000	50	DMC166508
DM PPS400-75	406	16	289	365	29,000	75	DMC166558
DM PPS450-50	457	18	289	365	29,000	50	DMC166558
DM PPS450-75	457	18	315	393	29,000	75	DMC166610
DM PPS500-50	508	20	315	393	29,000	50	DMC166610
DM PPS500-75	508	20	340	425	29,000	75	DMC166660
DM PPS600-50	610	24	366	457	45,000	50	DMC166711
DM PPS600-75	610	24	392	489	45,000	75	DMC166762
DM PPS750-50	762	30	442	554	45,000	50	DMC166863
DM PPS750-75	762	30	468	588	45,000	75	DMC166914



Hot Dip Galvanized, Stainless Steel, and Electrical Option available on request.
With connection nut M8/M10, M10/M12 available on request.
With M6 Side Nuts available on request.

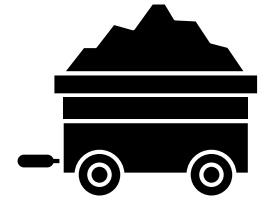
OUR PRODUCTION ARM



Leading
Manufacturer And
Fabricator



Region
Exposure



100%
Raw Material

0.5

Harmony Manufacturing is a leading manufacturer and fabricator of light steel construction products in the region, servicing the construction sector.

Products of Harmony Manufacturing are manufactured from quality raw material according to the relevant international standards to meet all kinds of construction projects requirements.



Health And Safty

The Factory Management regard the health and safety of the employees, clients and all others that may be affected by their operations to be of a major importance.

In support of this, the management promotes health and safety throughout the factory's operations and endeavor to engender a positive attitude in all employees towards the prevention of accidents and maintenance of healthy working arrangements.



The Factory satisfies the requirements of the Health, Safety and related legislation by setting out the responsibilities of all levels of staff and the arrangements for carrying out those responsibilities and in particular do what is reasonably practicable to:

1. Maintains safe & healthy working conditions.
2. Ensures that all facilities and equipment are safe and properly maintained.
3. Provides products that can be applied and used safely and without risk to health.
4. Provides and maintain working procedures, that are safe and without risk to health, throughout the its operations in respect of: The use, handling, storage, transports and disposal of materials and substances, The use of factory equipment , Potential emergency situations, including first aid & fire and escape of substances.
5. Ensure the competence of employees by keeping trained and up tp date with the latest in the industry both technically and in terms of safety.

Social Responsibility

Being socially responsible is a part of who we are and how we do our business. We aim to provide useful products and services, to provide jobs and development opportunities for our communities, and satisfaction through meaningful work.

We make a difference by acting on the values and principles of our societies and we inspire others to do at Harmony, we anticipate and reduce threats caused by environmental changes or natural disasters, and we are well adapted to significant social changes. We contribute to a more sustainable society by means of value and support to our consumers & our supply chains.



WE ARE KEEN TO IDENTIFY WAYS THEY CAN IMPROVE OUR IMPACTS ON THE PEOPLE AND PLACES WE WORK.

- Organizational governance: We promote accountability and transparency at all levels.
- Human care: We treat individuals with respect; and make efforts to help members of vulnerable groups.
- Labor practices: We provide just, safe and favorable conditions to workers
- Environment: At Harmony, we identify and improve environmental impacts of our operations, including the resource use of natural resources and waste disposal.

At Harmony, we are committed to continuous improvement ongoing learning, process review and innovative thinking that foster new initiatives; and better practices.

Our environmental programs evolve to meet today's changing needs while protecting resources for future generations.

CONTACT INFORMATION

www.harmony-egy.com
info@harmony-egy.com

Plot 230, Third Industrial Zone, 6th of October, Giza, Egypt
المنطقة الصناعية الثالثة، القطعة ٢٣٠، مدينة 6 أكتوبر، الجيزة، مصر

+2 0111 521 3111
+2 0121 0 11 2633