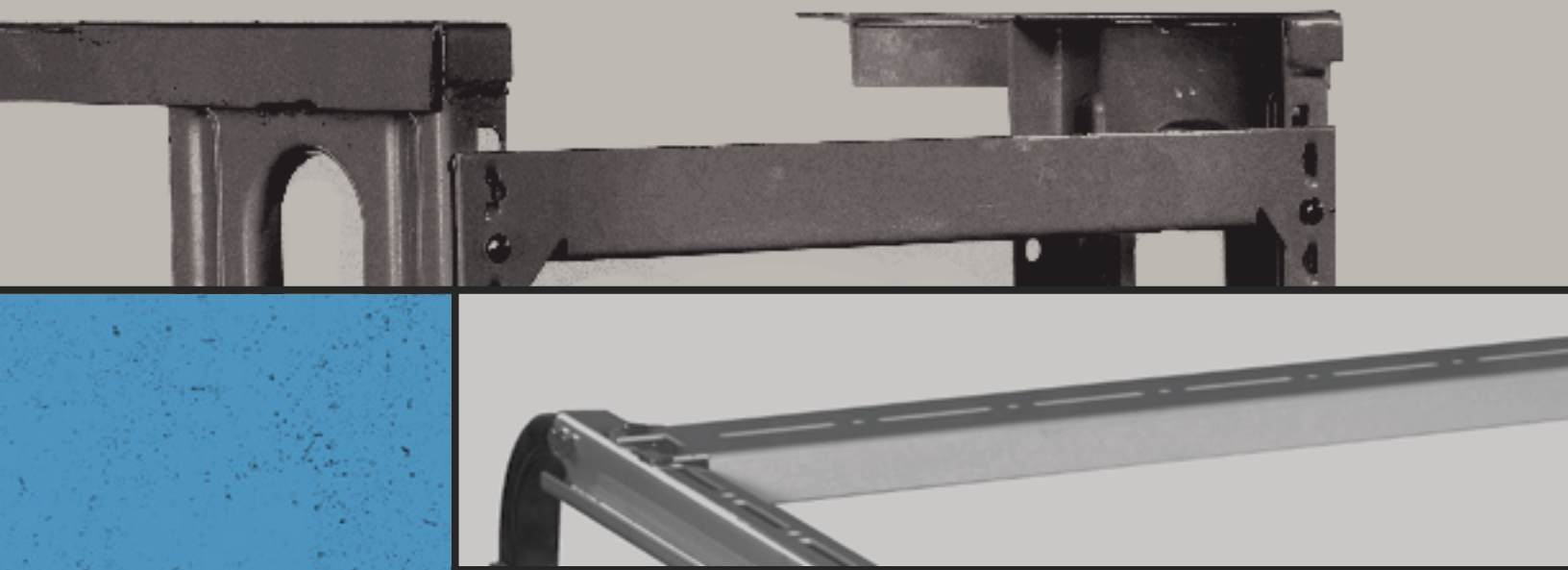


# Products Catalogue



**MARBLE &  
GRAINTE  
FIXATION  
SYSTEM**



**HARMONY<sup>®</sup>**  
SUPPLIER

QUALITY  
EMPOWERS  
YOU.

# ABOUT HARMONY

---

## 0.1

---

Harmony Group is the national market leader in several sheet metal products and successfully develops new types of applications for sheet metal that can be used in various fields. The privately owned company based in Giza, Egypt, develops and manufactures high specialized products for different home appliances products.

The Factory is located in the 3rd industrial zone, 6th of October, Giza, Egypt. Harmony's facility covers a manufacturing area of 2000 m<sup>2</sup> where more than 250 hard working employee get the work done. Combining decades of technical experience with modern management. Harmony is constantly expanding its business.

# CERTIFICATION

CERTIFICATES

## ISO 9001:2015



# ISO 14001:2015



Scan this QR Code with smartphone to verify the certificate

## CERTIFICATE OF REGISTRATION



This is to certify that:

**HARMONY**  
(ALAA OSAMA MAHMOUD AND HIS PARTNERS)

---

PLOT 230, THIRD INDUSTRIAL ZONE,  
6TH OF OCTOBER, GIZA - EGYPT

Additional Site:  
1, NEW MARWA BUILDING, AHMED TAYSEER STREET,  
NASR CITY, EGYPT

*the management system of the above organisation has been assessed and found to comply with the requirements of the management system standards detailed below*

---

**STANDARD**

### ISO 14001:2015

Environmental Management System

---

**Certification Scope**

Manufacturing of All Steel and Construction and Supports for Pipes and Process Components Products and Sheet Metal Fabrication.  
Design, Supply, Installation, Testing, Commissioning & After Sales Service of All Types of HVAC (Heating, Ventilation and Air-Conditioning) Systems.  
Design, Supply, Installation, Testing & Commissioning of All Types of Fire-Fighting Systems.

---

**Certification Calendar**

<b>Certificate Number</b> IAS2612144669	<b>Date of Registration</b> 26-Dec-2022	<b>Validity</b> Validity of this certificate is subject to successful and timely completion of the annual surveillance audit.
<b>Client ID</b> HA2086	<b>Valid From</b> 26-Dec-2022	<b>Note<sup>1</sup></b> : Certification cycle expiry date of this certificate is - 25-Dec-2025.
<b>Revision No.</b> 00	<b>Valid Until</b> 25-Dec-2023	<b>Note<sup>2</sup></b> : Surveillance 01 will be due in the month of Nov-2023 and Surveillance 02 will be due in the month of Nov-2024.

\*This certificate remains the property of SAGACI and shall have to be returned back when it has ceased to be valid, for whatever reason.  
Information about this certificate can be inquired at the official website of certification ([www.sagaciert.com](http://www.sagaciert.com))



Authorized Signatory





ACCREDITED  
Management System  
Certification Body  
ISO/IEC

**SAGACI CERTIFICATIONS PRIVATE LIMITED**  
[www.sagaciert.com](http://www.sagaciert.com)

This certificate has been issued by Sagar Certifications Pvt. Ltd., B-1, 3, Block 3, Sector 17, Gurgaon, Haryana, India. It is valid only if the client complies with the requirements of the standard. This will be reviewed regularly by SAGACI. The use of ISO accreditation marks indicates accreditation in respect of those activities covered by the accreditation certificate. Further clarification regarding the scope of this certificate and verification of the certificate is available through SAGACI or [www.sagaciert.com](http://www.sagaciert.com).  
Phone: 011-43692111, Email: [info@sagaciert.com](mailto:info@sagaciert.com), Web: [www.sagaciert.com](http://www.sagaciert.com)

# ISO 45001:2018



Scan this QR Code with smartphone to verify the certificate

## CERTIFICATE OF REGISTRATION



This is to certify that:

**HARMONY**  
(ALAA OSAMA MAHMOUD AND HIS PARTNERS)

---

PLOT 230, THIRD INDUSTRIAL ZONE,  
6TH OF OCTOBER, GIZA - EGYPT

Additional Site:  
1, NEW MARWA BUILDING, AHMED TAYSEER STREET,  
NASR CITY, EGYPT

*the management system of the above organisation has been assessed and found to comply with the requirements of the management system standards detailed below*

---

**STANDARD**

### ISO 45001:2018

Occupational Health & Safety Management System

---

**Certification Scope**

Manufacturing of All Steel and Construction and Supports for Pipes and Process Components Products and Sheet Metal Fabrication.  
Design, Supply, Installation, Testing, Commissioning & After Sales Service of All Types of HVAC (Heating, Ventilation and Air-Conditioning) Systems.  
Design, Supply, Installation, Testing & Commissioning of All Types of Fire-Fighting Systems.

---

**Certification Calendar**

<b>Certificate Number</b> IAS2612454470	<b>Date of Registration</b> 26-Dec-2022	<b>Validity</b> Validity of this certificate is subject to successful and timely completion of the annual surveillance audit.
<b>Client ID</b> HA2086	<b>Valid From</b> 26-Dec-2022	<b>Note<sup>1</sup></b> : Certification cycle expiry date of this certificate is - 25-Dec-2025.
<b>Revision No.</b> 00	<b>Valid Until</b> 25-Dec-2023	<b>Note<sup>2</sup></b> : Surveillance 01 will be due in the month of Nov-2023 and Surveillance 02 will be due in the month of Nov-2024.

\*This certificate remains the property of SAGACI and shall have to be returned back when it has ceased to be valid, for whatever reason.  
Information about this certificate can be inquired at the official website of certification ([www.sagaciert.com](http://www.sagaciert.com))



Authorized Signatory





ACCREDITED  
Management System  
Certification Body  
ISO/IEC

**SAGACI CERTIFICATIONS PRIVATE LIMITED**  
[www.sagaciert.com](http://www.sagaciert.com)

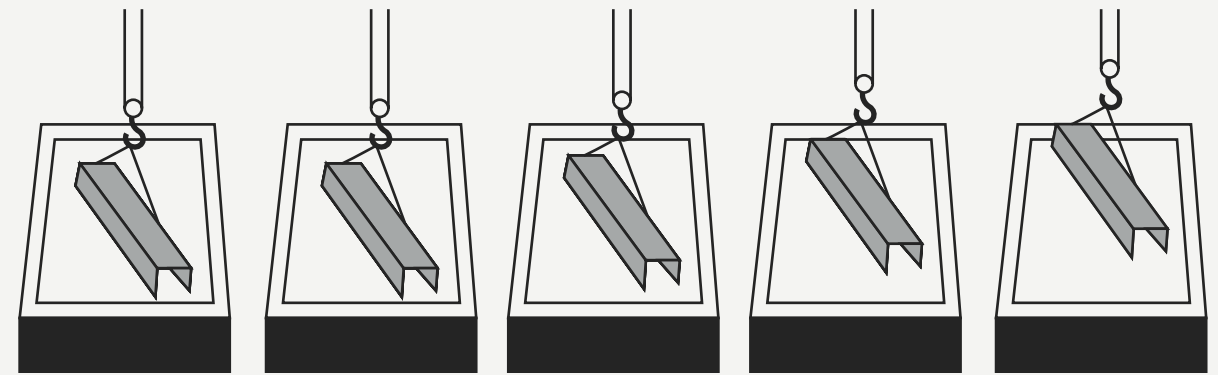
This certificate has been issued by Sagar Certifications Pvt. Ltd., B-1, 3, Block 3, Sector 17, Gurgaon, Haryana, India. It is valid only if the client complies with the requirements of the standard. This will be reviewed regularly by SAGACI. The use of ISO accreditation marks indicates accreditation in respect of those activities covered by the accreditation certificate. Further clarification regarding the scope of this certificate and verification of the certificate is available through SAGACI or [www.sagaciert.com](http://www.sagaciert.com).  
Phone: 011-43692111, Email: [info@sagaciert.com](mailto:info@sagaciert.com), Web: [www.sagaciert.com](http://www.sagaciert.com)

# Galvanization Methodology.

Hot-dip galvanizing is the process of immersing iron or steel in a bath of molten zinc to produce a corrosion resistant, multi-layered coating of zinc-iron alloy and zinc metal. While the steel is immersed in the zinc, a metallurgical reaction occurs between the iron in the steel and the molten zinc. This reaction is a diffusion process, so the coating forms perpendicular to all surfaces creating a uniform thickness throughout the part.

FIRST STEP

## SURFACE PREPARATION



Caustic Cleaning

Rinsing

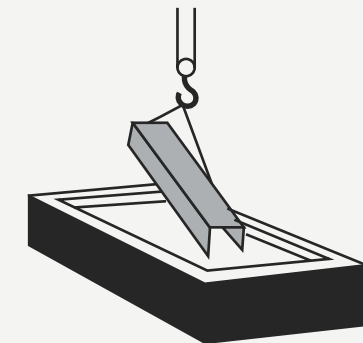
Pickling

Rinsing

Flux Solution

SECOND STEP

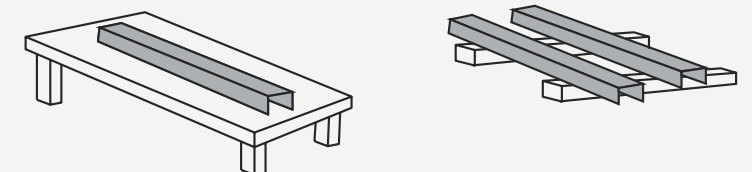
## GALVANIZING Molten Zinc Bath



FINAL STEP

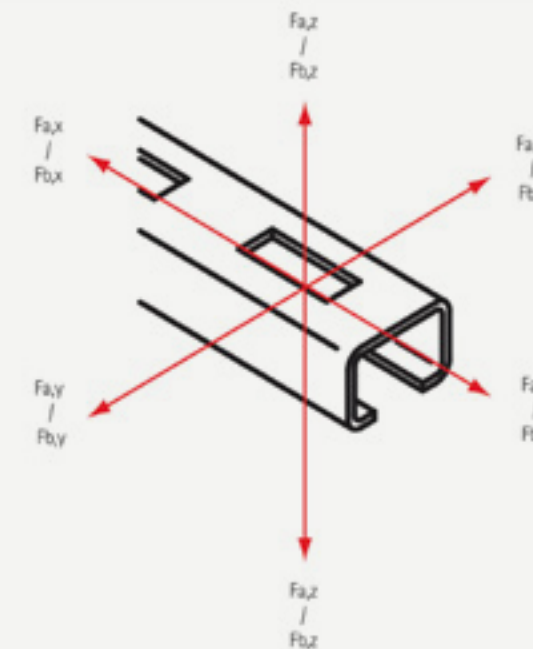
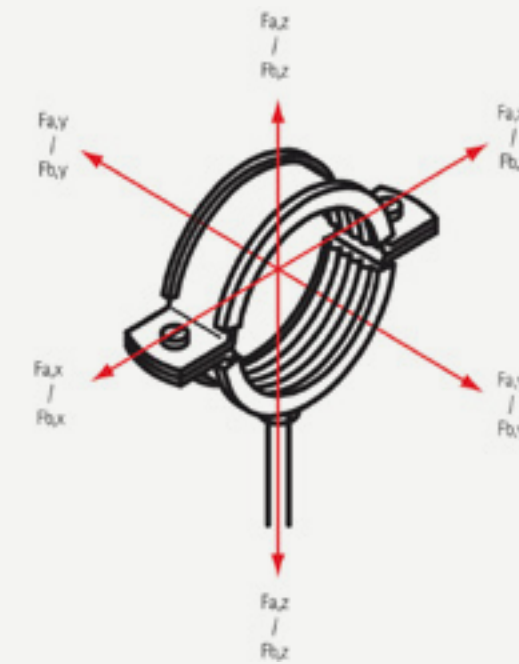
## INSPECTION

Cooling and  
Quality Assurance



# Maximum Allowed Load.

From most of our products a maximum allowed load is included in the article tables. Stand values are determined by the measuring method described in the testing prescriptions RAL-GZ 655, which is set up by the 'Gütegemeinschaft Rohrbefestigung!'. If the product is provided with the 'RAL-Gütezeichen', the test results are checked by an independent testing institute.



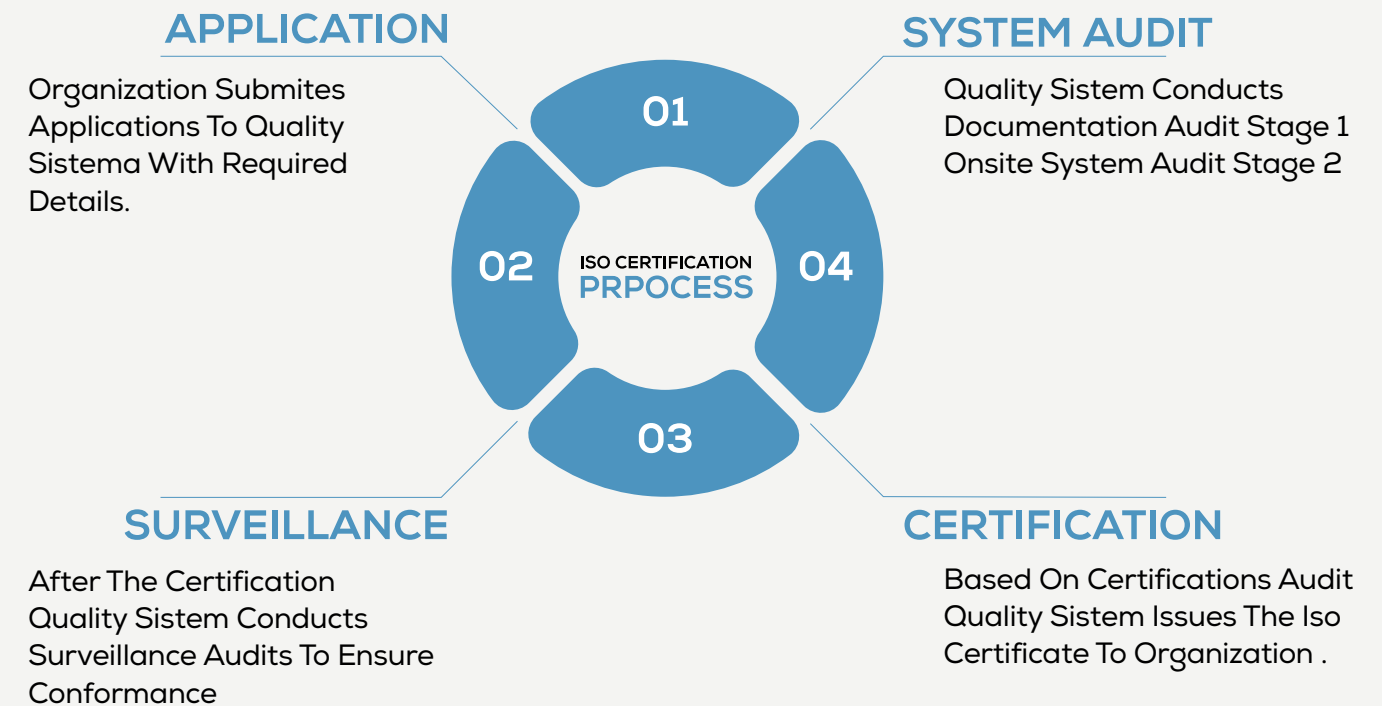
## Force Directions (F) x, y, and z (at 20°C)

Fa = Maximum Allowe Load  
 Fb = Breaking Load  
 For plastic clamps the breaking load is included.

# Commitment To Quality

Our commitment to quality is clearly revealed in the way we do our business; our processes, our close interaction with our clients as well By delivering superior products tailored to the specific construction needs, ambitious solutions, and an outstanding as the strict product inspection procedures.

To achieve this, we have implemented quality systems & processes that are continually being improved to satisfy our customer's needs



# MARBLE & GRANITE FIXATION SYSTEM

## 1.0

## Marble & Granite Fixation System

### 1.1

#### C-Channels

- 1.1.1 B2B Type Channel
- 1.1.2 PT Type Channel
- 1.1.3 ST Type Channel
- 1.1.4 Type Sizes Selection Chart

PAGE 19



### 1.2

#### Corrugated Dowel

- 1.2.1 Corrugated Dowel

PAGE 27



### 1.3

#### Fish-Tail

- 1.3.1 Fish-tail Bracket
- 1.3.2 Fish-tail Bracket with pin

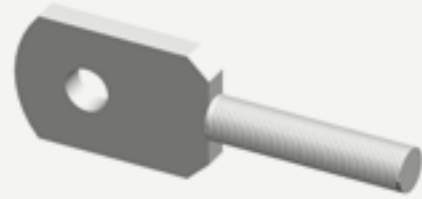
PAGE 29



## 1.4

### Flat-Head Bolt

- 1.4.1 Flat-Head Bolt
- 1.4.2 EPDM Two Bolt Clamp



PAGE 33

## 1.5

### L-Bracket

- 1.5.1 ST500-1100 With Pin
- 1.5.2 ST500-1200 With Up & Down Legs
- 1.5.3 ST500-1300 With Up Legs
- 1.5.4 ST500-1400 With Down Legs
- 1.5.5 ST500-1500 With Double Pins
- 1.5.6 ST500-1600 With Double Up & Down Legs
- 1.5.7 ST500-1700 With Curved Leg



PAGE 35

## 1.6

### Omega Bracket

- 1.6.1 Omega Bracket



PAGE 49

## 1.7

### Z-Bracket

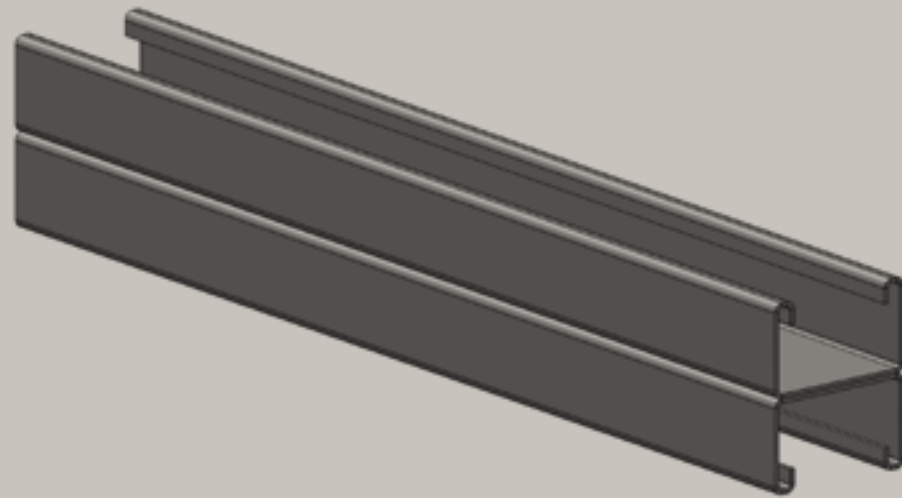
- 1.7.1 Z-Bracket



PAGE 51



# B2B Type Channel

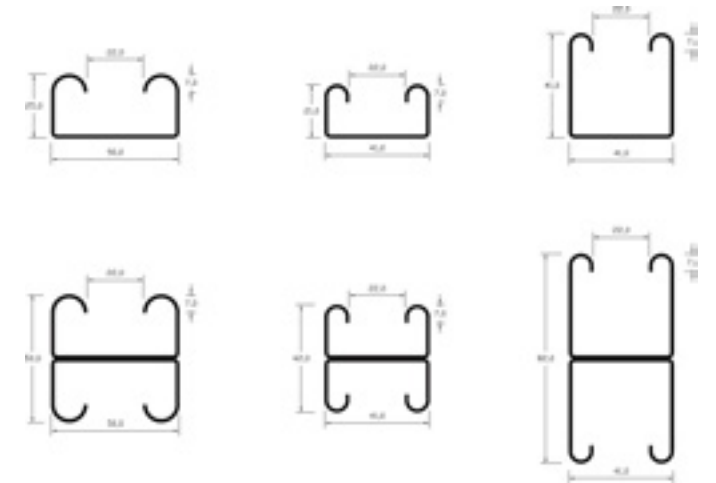


## FEATURES & BENEFITS

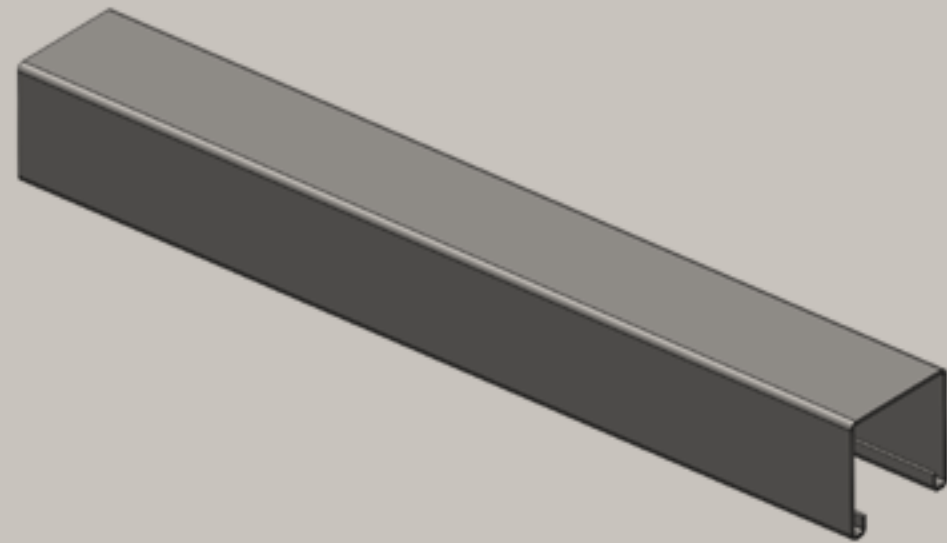
- Lock bolts with combi cross recessed head.
- For horizontal and vertical applications.
- Profiled for extra strength.
- Screws secured with anti-loss washer.
- Temperature resistance from -20 °C to +110 °C.
- Electrogalvanized as per ASTM B 633 Standards (SC3), B5 1706 FE/ZN 12.
- Noise insulating lining, rubber, black.
- Noise reduction up to 18dB (A).
- Material: steel.



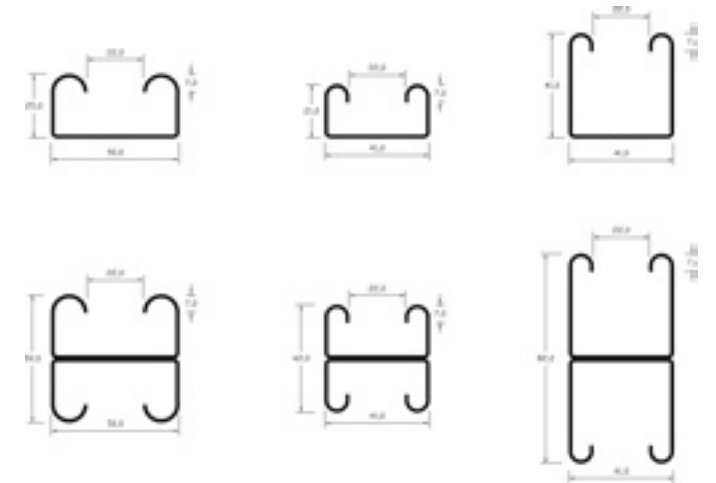
Part NO	Thick. mm.	Height "H"
CCH-221	1.5	42
CCH-242	1.5	82
CCH-262	1.5	50
CCH-322	2	42
CCH-342	2	82
CCH-362	2	50
CCH-422	2.5	42
CCH-442	2.5	82
CCH-462	2.5	50



# PT Type Channel



Part NO	Thick. mm.	Height "H"
CCH-220	1.5	21
CCH-240	1.5	41
CCH-260	1.5	25
CCH-320	2	21
CCH-340	2	41
CCH-360	2	25
CCH-420	2.5	21
CCH-440	2.5	41
CCH-460	2.5	25

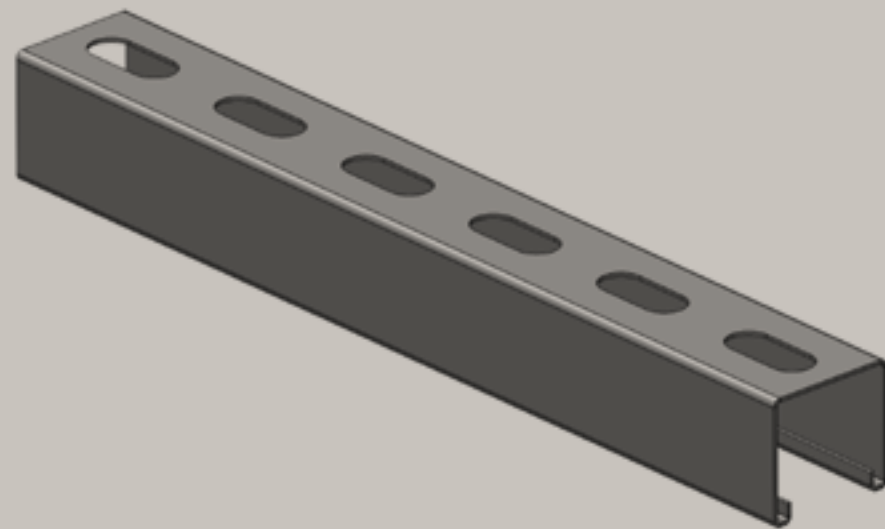


## FEATURES & BENEFITS

- Lock bolts with combi cross recessed head.
- For horizontal and vertical applications.
- Profiled for extra strength.
- Screws secured with anti-loss washer.
- Temperature resistance from -20 °C to +110 °C.
- Electrogalvanized as per ASTM B 633 Standards (SC3), B5 1706 FE/ZN 12.
- Noise insulating lining, rubber, black.
- Noise reduction up to 18dB (A).
- Material: steel.



# ST Type Channel

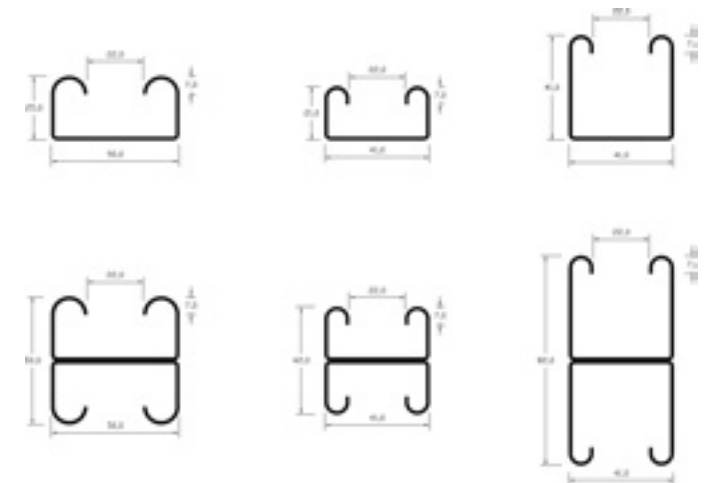


## FEATURES & BENEFITS

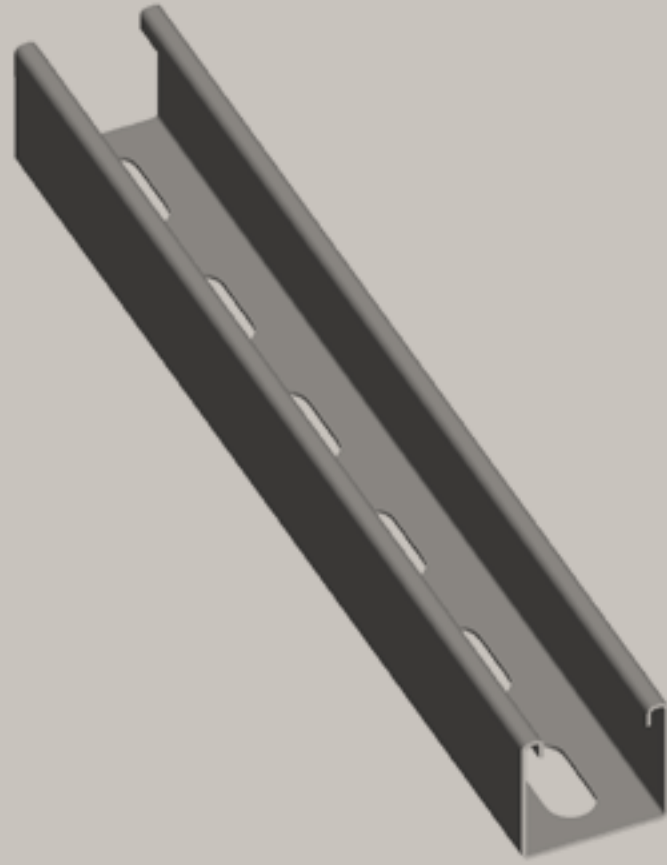
- Lock bolts with combi cross recessed head.
- For horizontal and vertical applications.
- Profiled for extra strength.
- Screws secured with anti-loss washer.
- Temperature resistance from -20 °C to +110 °C.
- Electrogalvanized as per ASTM B 633 Standards (SC3), B5 1706 FE/ZN 12.
- Noise insulating lining, rubber, black.
- Noise reduction up to 18dB (A).
- Material: steel.



Part NO	Thick. mm.	Height "H"
CCH-221	1.5	21
CCH-241	1.5	41
CCH-261	1.5	25
CCH-321	2	21
CCH-341	2	41
CCH-361	2	25
CCH-421	2.5	21
CCH-441	2.5	41
CCH-461	2.5	25



# C-Channels Size Type Selection Chart



## FEATURES & BENEFITS

Lock bolts with combi cross recessed head.

Electrogalvanized as per ASTM B 633

For horizontal and vertical applications.

Standards (SC3), B5 1706 FE/ZN 12.

Profiled for extra strength.

Noise insulating lining, rubber, black.

Screws secured with anti-loss washer.

Noise reduction up to 18dB (A).

Temperature resistance from -20 °C to +110 °C.

Material: steel.



C-Channel:	41 x 41 x 15	Beam Load Data							
		Span (L)		Allowable Load*		Deflection			
b2b		(cm)	q (kN / m)	F (kN)	U (mm)	(L / X)	q (kN / m)	L / 360	L / 180
Area of Shear (Az)	143 cm <sup>2</sup>	50	19.2	4.8	0.44	113	19.2		19.2
Moment of Inertia (Iy)	21.11 cm <sup>4</sup>	60	13.3	4	0.63	950	13.3		13.3
Moment of Inertia (Iz)	11.37 cm <sup>4</sup>	70	9.8	3.4	0.86	810	9.8		9.8
min. Section Modulus (Sy)	5.15 cm <sup>3</sup>	80	7.5	3	1.3	710	7.5		7.5
Warping Constant (IW)	95.85 cm <sup>6</sup>	90	5.9	2.7	1.42	630	5.9		5.9
Torsional Constant (LT)	0.04 cm <sup>4</sup>	100	4.8	2.4	1.76	570	4.8		4.8
Plastic Moment Cap. (Mpl.y)	1.53 kNm	125	3.1	1.9	2.78	450	3.1		3.1
Self Weight (G)	2.88 Kg/m	150	2.1	1.6	3.9	380	2.1		2.1
Chosen Material:	40 B = S 235 JRG2	175	1.6	1.4	5.51	320	1.4		1.6
Allowable Bending Stress	21,82 kN/cm <sup>2</sup>	200	1.1	1.1	6.46	310	0.9		1.1
Allowable Shear Stress	12,60 kN/cm <sup>2</sup>	225	0.8	0.9	7.53	300	0.7		0.8
Modulus of Elasticity	21 kN/cm <sup>2</sup>	250	0.58	0.7	8.32	300	0.5		0.6
		275	0.44	0.6	9.24	300	0.4		0.4
		300	0.34	0.5	10.11	300	0.3		0.3

C-Channel:	41 x 41 x 15	Beam Load Data							
		Span (L)		Allowable Load*		Deflection			
		(cm)	q (kN / m)	F (kN)	U (mm)	(L / X)	q (kN / m)	L / 360	L / 180
Area of Shear (Az)	1.02 cm <sup>2</sup>	50	6.6	1.7	0.83	610	6.6		6.6
Moment of Inertia (Iy)	3.87 cm <sup>4</sup>	60	4.6	1.4	1.19	500	4.6		4.6
Moment of Inertia (Iz)	5.68 cm <sup>4</sup>	70	3.3	1.2	1.59	440	3.3		3.3
min. Section Modulus (Sy)	1.76 cm <sup>3</sup>	80	2.6	1	2.13	380	2.6		2.6
Warping Constant (IW)	114.17 cm <sup>6</sup>	90	2	0.9	2.63	340	1.9		2
Torsional Constant (LT)	0.02 cm <sup>4</sup>	100	1.6	0.8	3.2	310	1.4		1.6
Plastic Moment Cap. (Mpl.y)	0.52 kNm	125	1	0.6	4.89	260	0.7		1
Self Weight (G)	1.44 Kg/m	150	0.73	0.5	7.4	200	0.4		0.7
Chosen Material:	40 B = S 235 JRG2	175	0.53	0.5	9.96	180	0.3		0.5
Allowable Bending Stress	21,82 kN/cm <sup>2</sup>	200	0.41	0.4	13.14	150	0.2		0.3
Allowable Shear Stress	12,60 kN/cm <sup>2</sup>	225	0.32	0.36	16.42	140	x		0.24
Modulus of Elasticity	21 kN/cm <sup>2</sup>	250	0.26	0.33	20.34	120	x		0.18
		275	0.22	0.3	25.2	110	x		x
		300	0.18	0.27	29.2	100	x		x

Part NO	Channel Dimensions			Part NO	Channel Dimensions			Part NO	Channel Dimensions		
	Height "H"	Width "w"	Thickness		Height "H"	Width "w"	Thickness		Height "H"	Width "w"	Thickness
CHH - 220/221	21 mm	41 mm	1.5 mm	CHH - 320/321	21 mm	41 mm	2 mm	CHH - 420/421	21 mm	41 mm	2.5 mm
CHH - 240/241	41 mm	41 mm	1.5 mm	CHH - 340/341	41 mm	41 mm	2 mm	CHH - 440/441/41 mm	41 mm		2.5 mm
CHH - 260/261	25 mm	50 mm	1.5 mm	CHH - 360/361	25 mm	50 mm	2 mm	CHH - 460/461	25 mm	50 mm	2.5 mm

# Corrugated Dowel

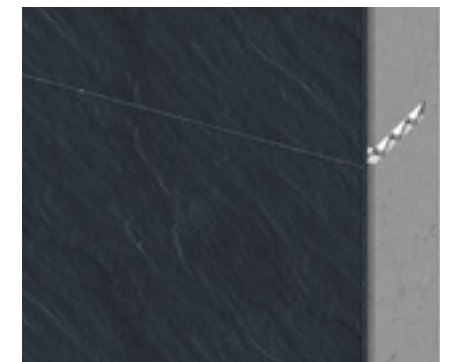
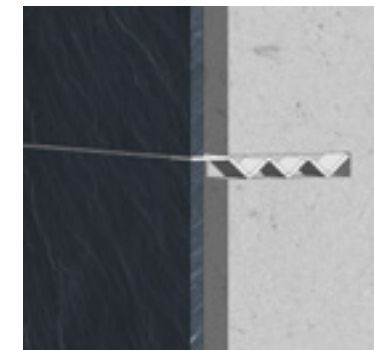
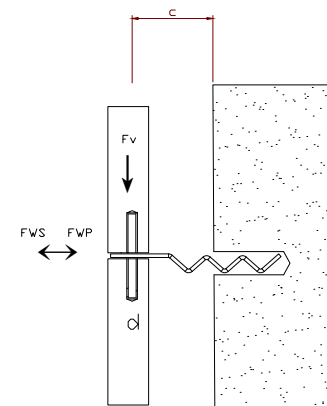


## FEATURES & BENEFITS

- Lock bolts with combi cross recessed head.
- For horizontal and vertical applications.
- Profiled for extra strength.
- Screws secured with anti-loss washer.
- Temperature resistance from -20 °C to +110 °C.
- Electrogalvanized as per ASTM B 633 Standards (SC3), B5 1706 FE/ZN 12.
- Noise insulating lining, rubber, black.
- Noise reduction up to 18dB (A).
- Material: steel.

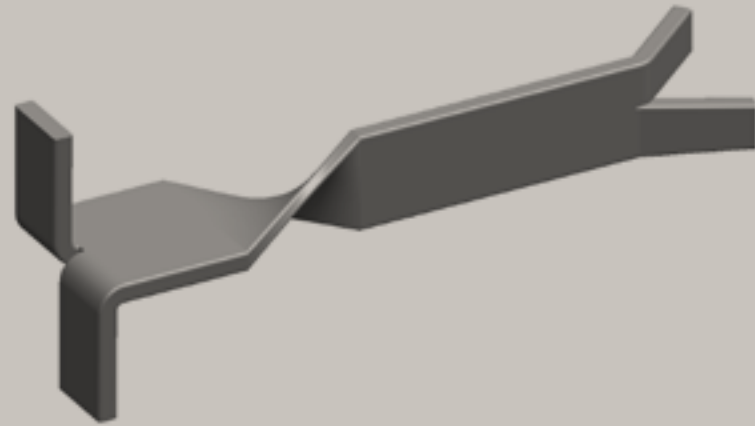


Net anchor	CODE	Stud				Fixable		volume Hole	Resin volume to inject
		0	length	0	0	Hole depth	thickness		
Type	CODE	dv/mm	l/mm	do/mm	dv/mm	ho/mm	tfix/mm	cm3	cm3
BE 12x45	8708955	M6-M8	65	12	10	45	-	5,1	5,1
BE 12x60	8708956	M6-M8	80	12	10	60	-	6,8	6,8
BE 12x80	8708957	M6-M8	110	12	10	70	10	9,1	9,1
BE 15x85	8708952	M8-M10	110-160	15	13	85	30-55	15,0	15,0
BE 15x130	8708953	M8-M10	160	15	13	130	10	23,0	23,0
BE 20x85	8708954	M12	115	20	18	85	10	26,7	26,7
BM 11x1000	8708961	M8	.var	12	9,5	.var	-	-	-
BM 15x1000	8708962	M10	.var	16	13,5	.var	-	-	-
BM 20x1000	8708963	M12	.var	22	19	.var	-	-	-



Hot Dip Galvanized, Stainless Steel, and Electrical Foption available on request.  
 With connection nut M8/M10, M10/M12 available on request.  
 With M6 Side Nuts available on request.

# Fish-Tail Bracket

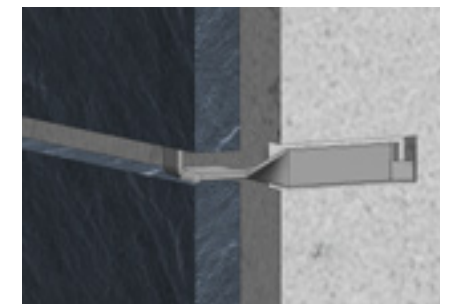
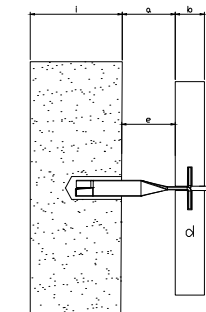
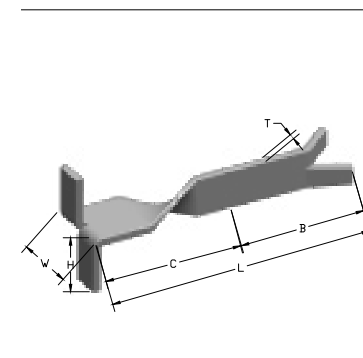


## FEATURES & BENEFITS

- Lock bolts with combi cross recessed head.
- For horizontal and vertical applications.
- Profiled for extra strength.
- Screws secured with anti-loss washer.
- Temperature resistance from -20 °C to +110 °C.
- Electrogalvanized as per ASTM B 633 Standards (SC3), B5 1706 FE/ZN 12.
- Noise insulating lining, rubber, black.
- Noise reduction up to 18dB (A).
- Material: steel.

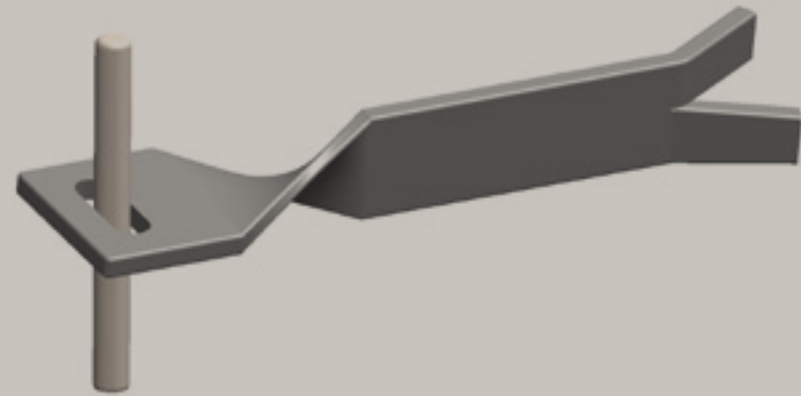


Codes	Width (W)	Thickness (T)	Length (L)	Height (H)
800-1200-25.2.100	25	2	100	15
800-1200-25.2.120	25	2	120	15
800-1200-25.2.140	25	2	140	15
800-1200-25.2.160	25	2	160	15
800-1200-25.3.100	25	3	100	15
800-1200-25.3.120	25	3	120	15
800-1200-25.3.140	25	3	140	15
800-1200-25.3.160	25	3	160	15
800-1200-25.4.100	30	4	100	15
800-1200-25.4.120	30	4	120	15
800-1200-25.4.140	30	4	140	15
800-1200-25.4.160	30	4	160	15



Hot Dip Galvanized, Stainless Steel, and Electrical Option available on request.  
 With connection nut M8/M10, M10/M12 available on request.  
 With M6 Side Nuts available on request.

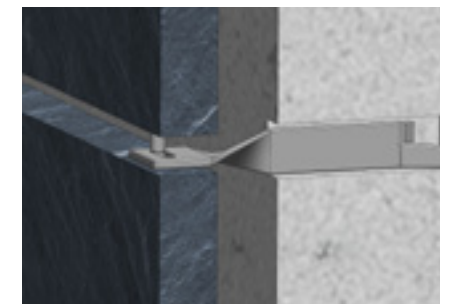
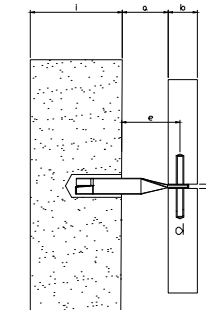
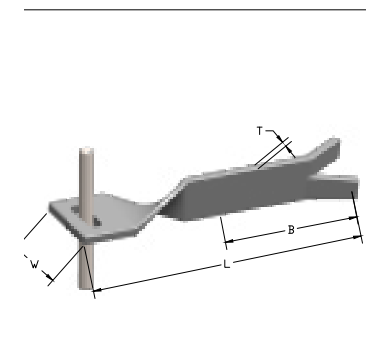
# Fish-Tail Bracket With Pin



Codes	Width (W)	Thickness (T)	Length (L)	SI hole
800-1100-25.2.100	25	2	100	4.1 x 15
800-1100-25.2.120	25	2	120	4.1 x 15
800-1100-25.2.140	25	2	140	4.1 x 15
800-1100-25.2.160	25	2	160	4.1 x 15
800-1100-25.3.100	25	3	100	4.1 x 15
800-1100-25.3.120	25	3	120	4.1 x 15
800-1100-25.3.140	25	3	140	4.1 x 15
800-1100-25.3.160	25	3	160	4.1 x 15
800-1100-25.4.100	30	4	100	5.1 x 15
800-1100-25.4.120	30	4	120	5.1 x 15
800-1100-25.4.140	30	4	140	5.1 x 15
800-1100-25.4.160	30	4	160	5.1 x 15

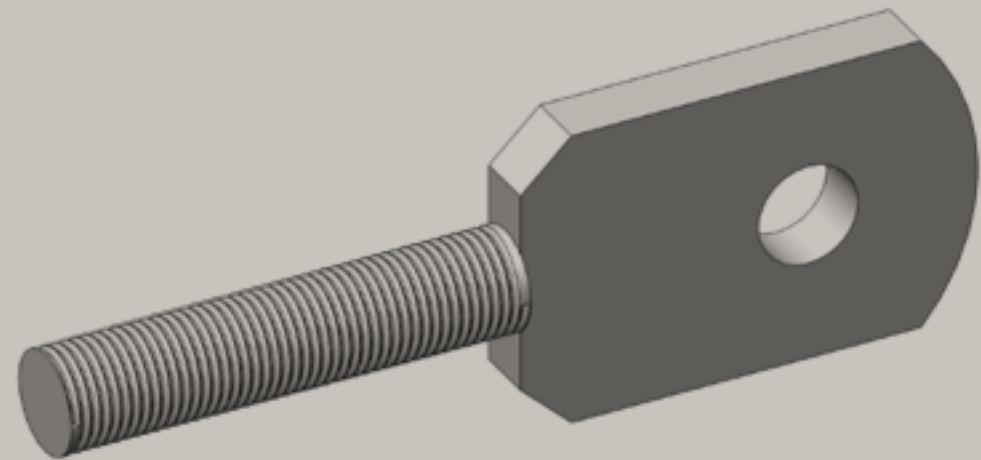
## FEATURES & BENEFITS

- Lock bolts with combi cross recessed head.
- For horizontal and vertical applications.
- Profiled for extra strength.
- Screws secured with anti-loss washer.
- Temperature resistance from -20 °C to +110 °C.
- Electrogalvanized as per ASTM B 633 Standards (SC3), B5 1706 FE/ZN 12.
- Noise insulating lining, rubber, black.
- Noise reduction up to 18dB (A).
- Material: steel.



Hot Dip Galvanized, Stainless Steel, and Electrical Option available on request.  
 With connection nut M8/M10, M10/M12 available on request.  
 With M6 Side Nuts available on request.

# Flat-Head Bolt



Cavity to Pin	Deadload	Winload	FHB	Ø Pin
min - max	max DL	max WL ±	A2-70	mm
mm	kN	kN	A4-70	
20-30	0.08	0.11	M6	4
30-40		M6	4	
40-50		M8	4	
50-60		M8	4	
30-40	0.16	0.22	M8	4
40-50		M8	4	
50-60		M10	4	
60-70		M10	4	
30-40	0.23	0.32	M10	5
40-50		M10	5	
50-60		M10	5	
60-70		M10	5	
30-40	0.45	0.63	M12	6
40-50		M12	6	
50-60		M12	6	
60-70		M12	6	

Flat-Head-Bolt direct in Wall		Flat-Head-Bolt in C-Channel	
a.	Cavity to Back Side Panel	a	Cavity to Back Side Panel
b	Panel Thickness	b	Panel Thickness
T	Bracket Thickness	T	Bracket Thickness
d	Diameter of Pin	d	Diameter of Pin
e	Cavity to Pin	e	Cavity to Pin
f	Flat Head parts	f	Flat Head parts
g	Rounded Parts	g	Rounded Parts
Economic For 10 < a ≤ 60mm		Economic For 10 < a ≤ 60mm	

## FEATURES & BENEFITS

Lock bolts with combi cross recessed head.

Electrogalvanized as per ASTM B 633

For horizontal and vertical applications.

Standards (SC3), B5 1706 FE/ZN 12.

Profiled for extra strength.

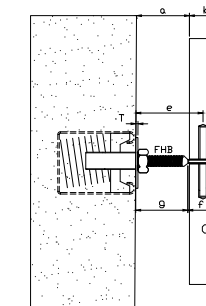
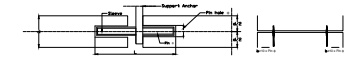
Noise insulating lining, rubber, black.

Screws secured with anti-loss washer.

Noise reduction up to 18dB (A).

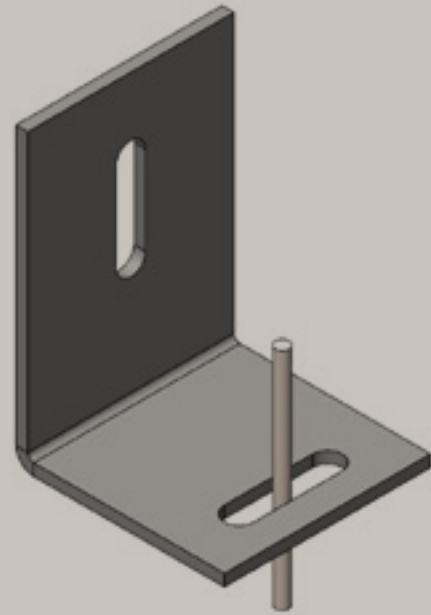
Temperature resistance from -20 °C to +110 °C.

Material: steel.



Hot Dip Galvanized, Stainless Steel, and Electrical Option available on request.  
With connection nut M8/M10, M10/M12 available on request.  
With M6 Side Nuts available on request.

# ST 500-1100 With Pin

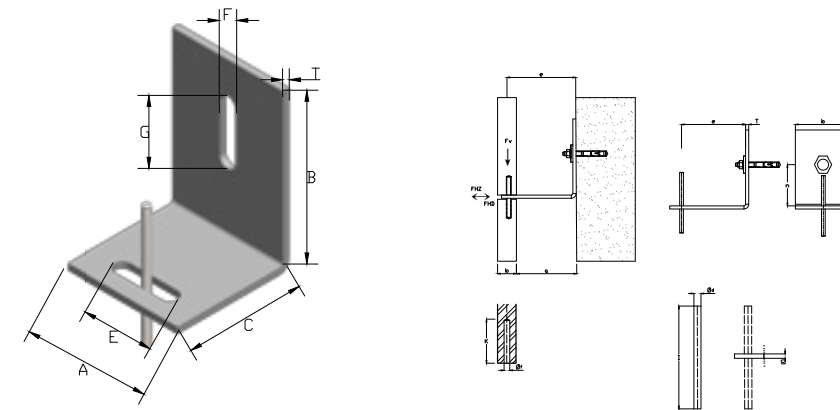


## FEATURES & BENEFITS

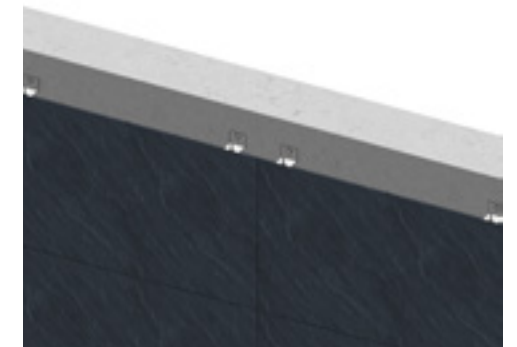
- Lock bolts with combi cross recessed head.      Electrogalvanized as per ASTM B 633
- For horizontal and vertical applications.          Standards (SC3), B5 1706 FE/ZN 12.
- Profiled for extra strength.                          Noise insulating lining, rubber, black.
- Screws secured with anti-loss washer.          Noise reduction up to 18dB (A).
- Temperature resistance from -20 °C to +110 °C.      Material: steel.



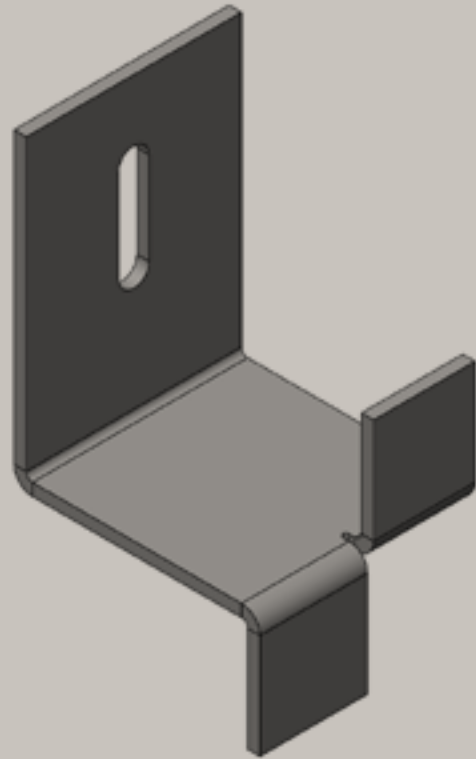
Item No.	T	A	B	C	sl hole
1200-35.45.30.2	2	35	45	30	6,5 x 22
1200-40.45.35.2	2	40	45	35	6,5 x 22
1200-35.45.30.3	3	35	45	30	6,5 x 22
1200-40.45.30.3	3	40	45	30	8,5 x 22
1200-35.45.35.3	3	35	45	35	8,5 x 22
1200-40.45.35.3	3	40	45	35	8,5 x 22
1200-35.45.30.3	3	35	45	40	8,5 x 22
1200-35.45.30.4	4	35	45	30	8,5 x 22
1200-35.45.35.4	4	35	45	35	8,5 x 22
1200-35.45.40.4	4	35	45	40	8,5 x 22
1200-35.50.45.4	4	35	50	45	8,5 x 22
1200-40.50.45.4	4	40	50	45	8,5 x 22



Hot Dip Galvanized, Stainless Steel, and Electrical Option available on request.  
 With connection nut M8/M10, M10/M12 available on request.  
 With M6 Side Nuts available on request.



# ST 500-1200 With Up & Down Legs

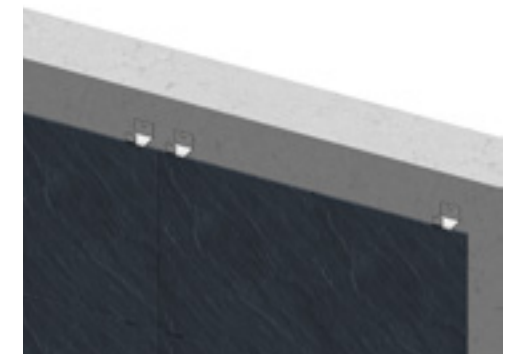
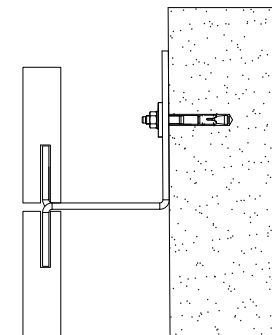
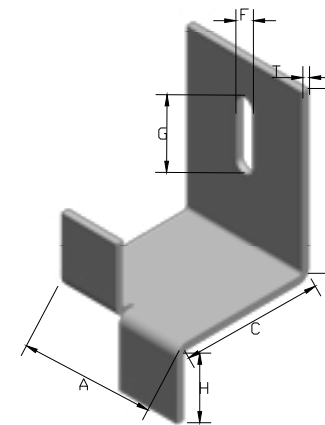


## FEATURES & BENEFITS

- Lock bolts with combi cross recessed head.
- For horizontal and vertical applications.
- Profiled for extra strength.
- Screws secured with anti-loss washer.
- Temperature resistance from -20 °C to +110 °C.
- Electrogalvanized as per ASTM B 633 Standards (SC3), B5 1706 FE/ZN 12.
- Noise insulating lining, rubber, black.
- Noise reduction up to 18dB (A).
- Material: steel.

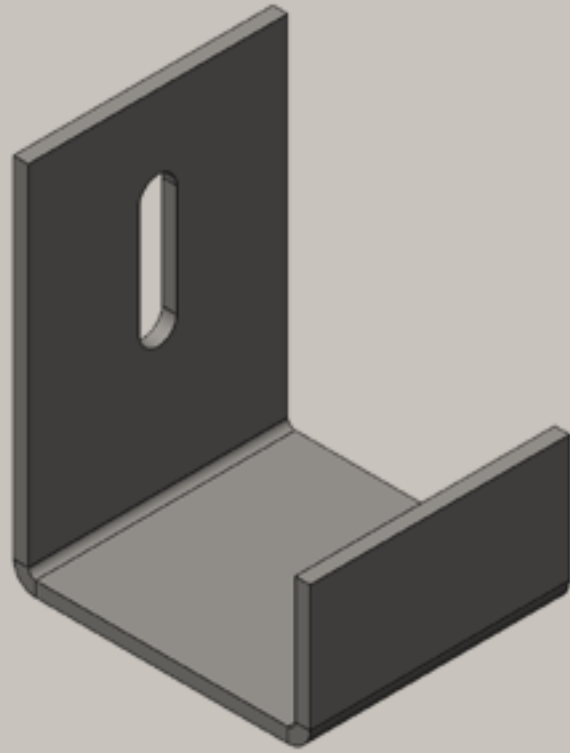


Item No.	T	A	B	C	H	sl hole
1200-35.45.30.2	2	35	45	30	15	6,5 x 22
1200-40.45.35.2	2	40	45	35	15	6,5 x 22
1200-35.45.30.3	3	35	45	30	15	6,5 x 22
1200-40.45.30.3	3	40	45	30	15	8,5 x 22
1200-35.45.35.3	3	35	45	35	15	8,5 x 22
1200-40.45.35.3	3	40	45	35	15	8,5 x 22
1200-35.45.30.3	3	35	45	40	15	8,5 x 22
1200-35.45.30.4	4	35	45	30	15	8,5 x 22
1200-35.45.35.4	4	35	45	35	15	8,5 x 22
1200-35.45.40.4	4	35	45	40	15	8,5 x 22
1200-35.50.45.4	4	35	50	45	15	8,5 x 22
1200-40.50.45.4	4	40	50	45	15	8,5 x 22



Hot Dip Galvanized, Stainless Steel, and Electrical Option available on request.  
 With connection nut M8/M10, M10/M12 available on request.  
 With M6 Side Nuts available on request.

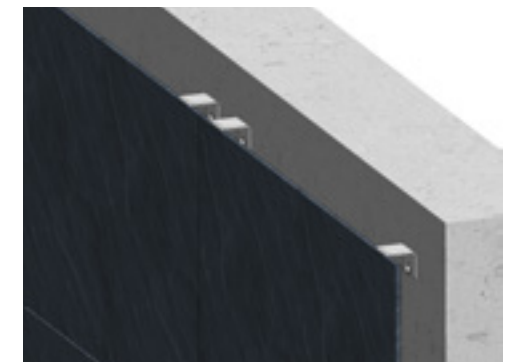
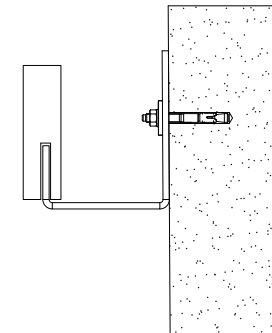
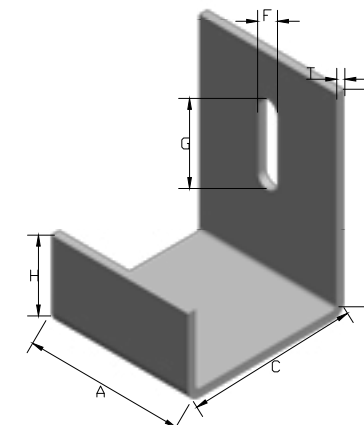
# ST 500-1300 With Up Legs



Item No.	T	A	B	C	H	sl hole
1100-35.45.30.2	2	35	45	30	4	6,5 x 22
1100-40.45.35.2	2	40	45	35	4	6,5 x 22
1100-35.45.30.3	3	35	45	30	4	6,5 x 22
1100-40.45.30.3	3	40	45	30	4	8,5 x 22
1100-35.45.35.3	3	35	45	35	4	8,5 x 22
1100-40.45.35.3	3	40	45	35	4	8,5 x 22
1100-35.45.40.3	3	35	45	40	4	8,5 x 22
1100-35.45.30.4	4	35	45	30	4	8,5 x 22
1100-35.45.35.4	4	35	45	35	4	8,5 x 22
1100-35.45.40.4	4	35	45	40	4	8,5 x 22
1100-35.50.45.4	4	35	50	45	4	8,5 x 22
1100-40.50.45.4	4	40	50	45	4	8,5 x 22

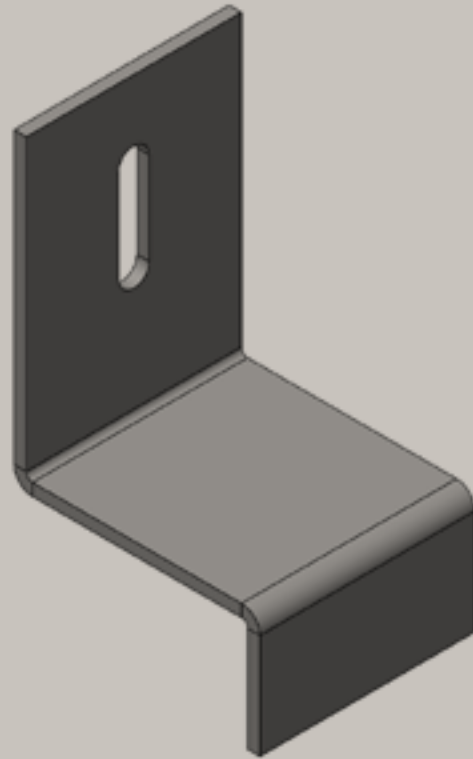
## FEATURES & BENEFITS

- Lock bolts with combi cross recessed head.
- For horizontal and vertical applications.
- Profiled for extra strength.
- Screws secured with anti-loss washer.
- Temperature resistance from -20 °C to +110 °C.
- Electrogalvanized as per ASTM B 633 Standards (SC3), B5 1706 FE/ZN 12.
- Noise insulating lining, rubber, black.
- Noise reduction up to 18dB (A).
- Material: steel.



Hot Dip Galvanized, Stainless Steel, and Electrical Option available on request.  
 With connection nut M8/M10, M10/M12 available on request.  
 With M6 Side Nuts available on request.

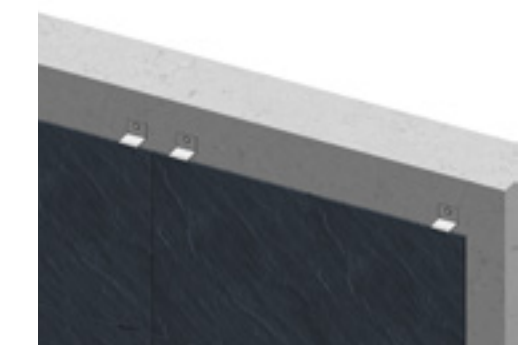
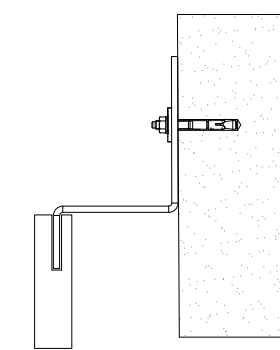
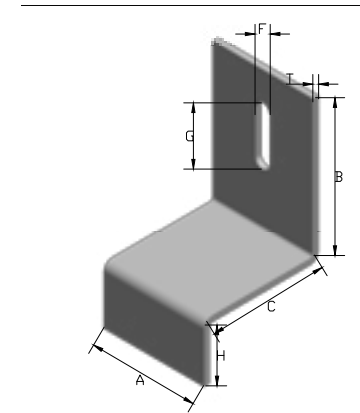
# ST 500-1400 With Down Legs



Item No.	T	A	B	C	H	sl hole
1200-35.45.30.2	2	35	45	30	15	6,5 x 22
1200-40.45.35.2	2	40	45	35	15	6,5 x 22
1200-35.45.30.3	3	35	45	30	15	6,5 x 22
1200-40.45.30.3	3	40	45	30	15	8,5 x 22
1200-35.45.35.3	3	35	45	35	15	8,5 x 22
1200-40.45.35.3	3	40	45	35	15	8,5 x 22
1200-35.45.40.3	3	35	45	40	15	8,5 x 22
1200-35.45.30.4	4	35	45	30	15	8,5 x 22
1200-35.45.35.4	4	35	45	35	15	8,5 x 22
1200-35.45.40.4	4	35	45	40	15	8,5 x 22
1200-35.50.45.4	4	35	50	45	15	8,5 x 22
1200-40.50.45.4	4	40	50	45	15	8,5 x 22

## FEATURES & BENEFITS

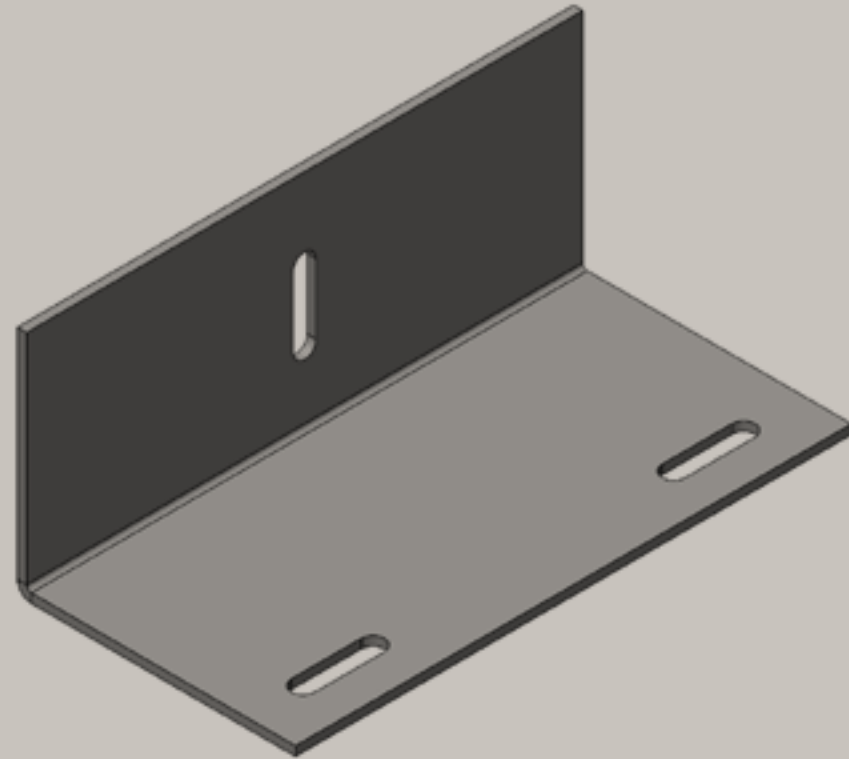
- Lock bolts with combi cross recessed head.
- For horizontal and vertical applications.
- Profiled for extra strength.
- Screws secured with anti-loss washer.
- Temperature resistance from -20 °C to +110 °C.
- Electrogalvanized as per ASTM B 633 Standards (SC3), B5 1706 FE/ZN 12.
- Noise insulating lining, rubber, black.
- Noise reduction up to 18dB (A).
- Material: steel.



Hot Dip Galvanized, Stainless Steel, and Electrical Option available on request.  
 With connection nut M8/M10, M10/M12 available on request.  
 With M6 Side Nuts available on request.



# ST 500-1500 With Double Pins



## FEATURES & BENEFITS

Lock bolts with combi cross recessed head.

For horizontal and vertical applications.

Profiled for extra strength.

Screws secured with anti-loss washer.

Temperature resistance from -20 °C to +110 °C.

Electrogalvanized as per ASTM B 633

Standards (SC3), B5 1706 FE/ZN 12.

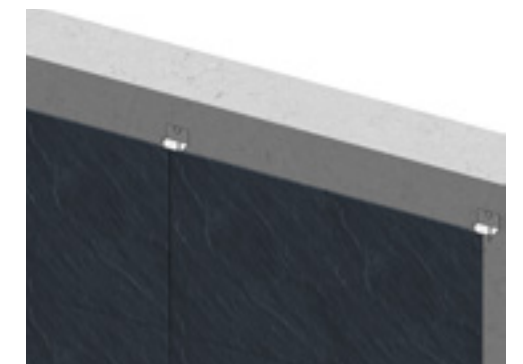
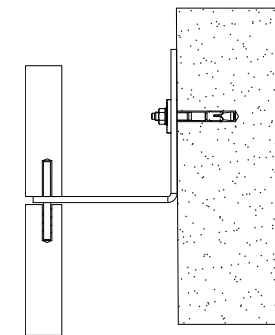
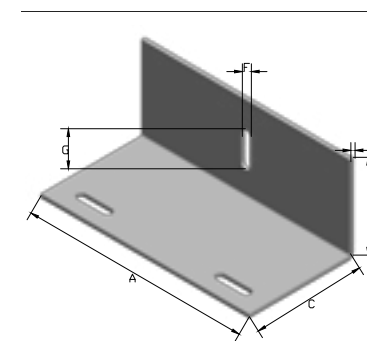
Noise insulating lining, rubber, black.

Noise reduction up to 18dB (A).

Material: steel.

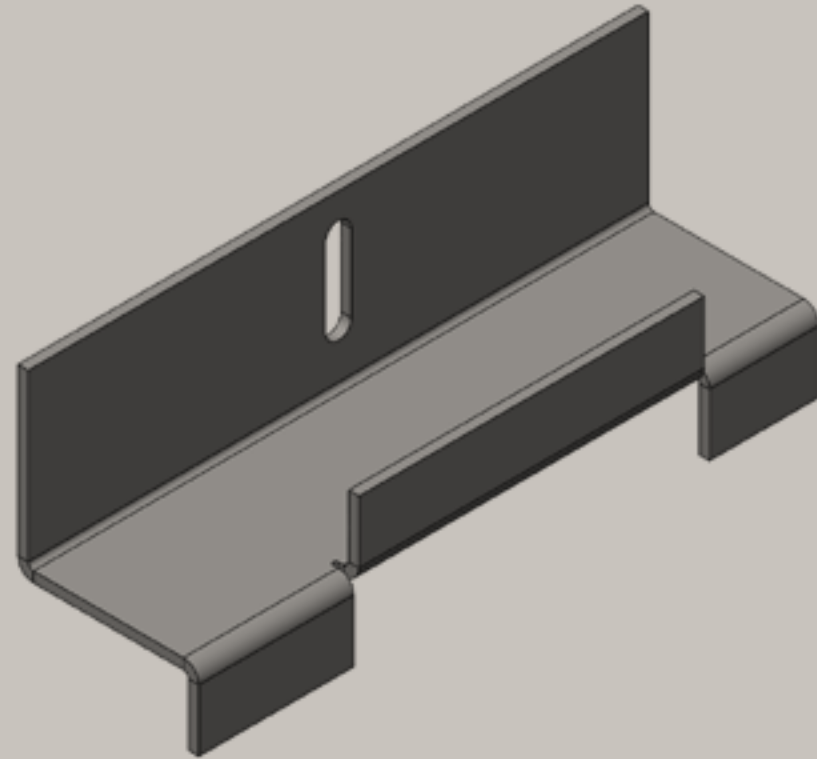
 **HARMONY**  
SUPPLIER

Item No.	T	A	B	C	Pin	sl hole
1500-35.45.30.3	3	120	50	30	2x4	8,5 x 22
1500-40.45.35.3	3	120	50	35	2x4	8,5 x 22
1500-35.45.30.3	3	120	50	40	2x4	8,5 x 22
1500-40.45.30.3	3	140	60	30	2x4	8,5 x 22
1500-35.45.35.3	3	140	50	45	2x4	8,5 x 22
1500-40.45.35.4	4	120	60	30	2x4	8,5 x 22
1500-35.45.40.4	4	120	60	35	2x4	8,5 x 22
1500-35.45.30.4	4	120	50	40	2x4	10,5 x 22
1500-35.45.35.4	4	120	50	45	2x4	10,5 x 22
1500-35.45.40.4	4	120	50	50	2x4	8,5 x 22
1500-35.50.45.4	4	120	60	50	2x4	10,5 x 22
1500-40.50.45.4	4	140	60	50	2x4	10,5 x 22



Hot Dip Galvanized, Stainless Steel, and Electrical Option available on request.  
With connection nut M8/M10, M10/M12 available on request.  
With M6 Side Nuts available on request.

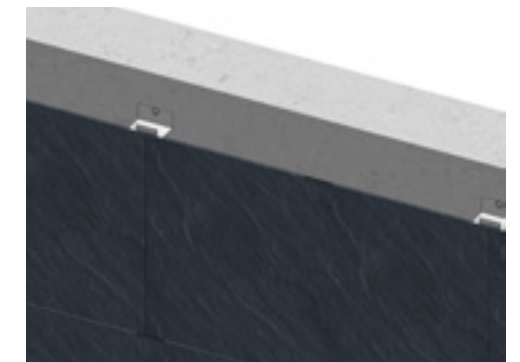
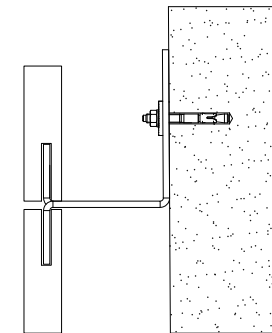
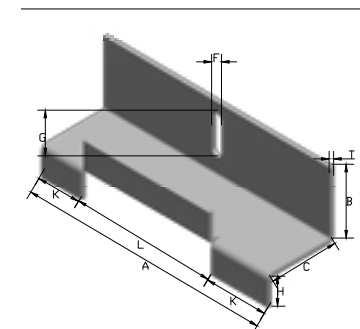
# ST 500-1600 With Double Up & Down Legs



Item No.	T	A	B	C	H	L	K	sl hole
1600-120.50.30.3	3	120	50	30	15	A/2	A/4	8,5 x 22
1600-120.50.35.3	3	120	50	35	15	A/2	A/4	8,5 x 22
1600-120.50.40.3	3	120	50	40	15	A/2	A/4	8,5 x 22
1600-140.60.30.3	3	140	60	30	15	A/2	A/4	8,5 x 22
1600-140.50.45.3	3	140	50	45	15	A/2	A/4	8,5 x 22
1600-120.60.30.4	4	120	60	30	15	A/2	A/4	8,5 x 22
1600-120.60.35.4	4	120	60	35	15	A/2	A/4	8,5 x 22
1600-120.50.40.4	4	120	50	40	15	A/2	A/4	10,5 x 22
1600-120.50.45.4	4	120	50	45	15	A/2	A/4	10,5 x 22
1600-120.50.50.4	4	120	50	50	15	A/2	A/4	8,5 x 22
1600-120.60.50.4	4	120	60	50	15	A/2	A/4	10,5 x 22
1600-140.60.50.4	4	140	60	50	15	A/2	A/4	10,5 x 22

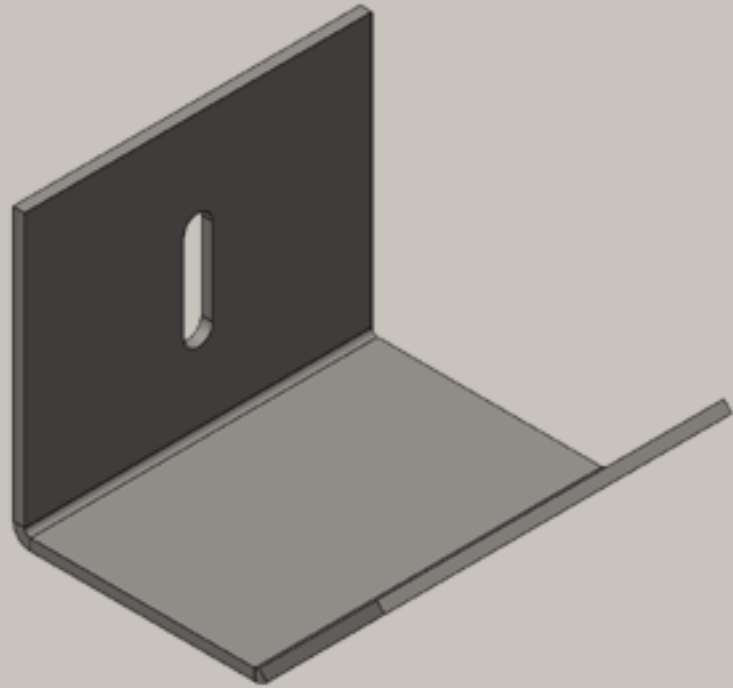
## FEATURES & BENEFITS

- Lock bolts with combi cross recessed head.
- For horizontal and vertical applications.
- Profiled for extra strength.
- Screws secured with anti-loss washer.
- Temperature resistance from -20 °C to +110 °C.
- Electrogalvanized as per ASTM B 633 Standards (SC3), B5 1706 FE/ZN 12.
- Noise insulating lining, rubber, black.
- Noise reduction up to 18dB (A).
- Material: steel.



Hot Dip Galvanized, Stainless Steel, and Electrical Option available on request.  
 With connection nut M8/M10, M10/M12 available on request.  
 With M6 Side Nuts available on request.

# ST 500-1700 With Curved Leg



## FEATURES & BENEFITS

Lock bolts with combi cross recessed head.

Electrogalvanized as per ASTM B 633

For horizontal and vertical applications.

Standards (SC3), B5 1706 FE/ZN 12.

Profiled for extra strength.

Noise insulating lining, rubber, black.

Screws secured with anti-loss washer.

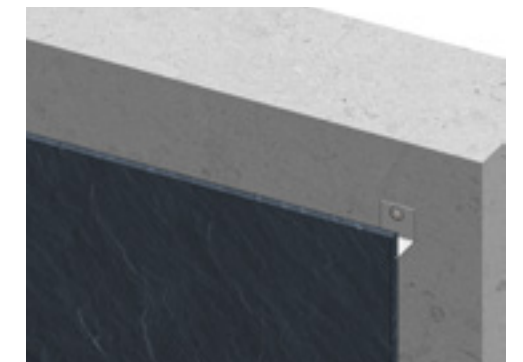
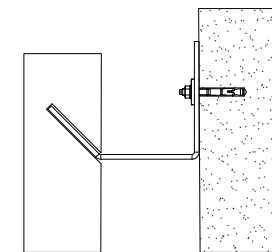
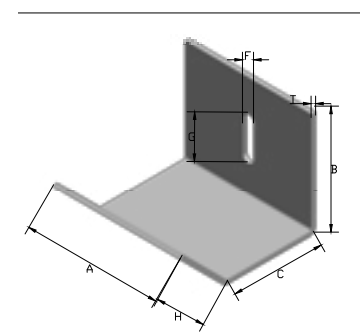
Noise reduction up to 18dB (A).

Temperature resistance from -20 °C to +110 °C.

Material: steel.

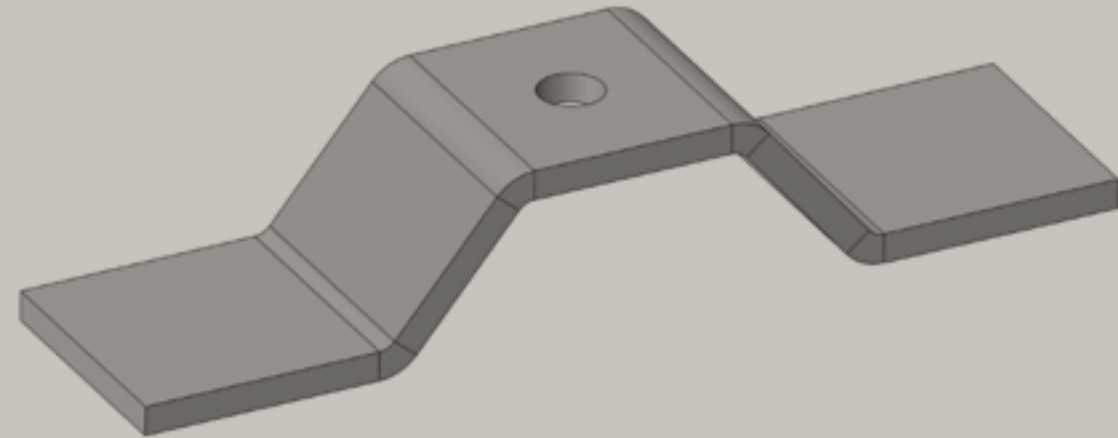
 **HARMONY**  
SUPPLIER

Item No.	T	A	B	C	H	sl hole
1700-35.45.30.2	2	35	45	30	20	6,5 x 22
1700-40.45.35.2	2	40	45	35	20	6,5 x 22
1700-35.45.30.3	3	35	45	30	20	6,5 x 22
1700-40.45.30.3	3	40	45	30	20	8,5 x 22
1700-35.45.35.3	3	35	45	35	20	8,5 x 22
1700-40.45.35.3	3	40	45	35	20	8,5 x 22
1700-35.45.40.3	3	35	45	40	20	8,5 x 22
1700-35.45.30.4	4	35	45	30	20	8,5 x 22
1700-35.45.35.4	4	35	45	35	20	8,5 x 22
1700-35.45.40.4	4	35	45	40	20	8,5 x 22
1700-35.50.45.4	4	35	50	45	20	8,5 x 22
1700-40.50.45.4	4	40	50	45	20	8,5 x 22



Hot Dip Galvanized, Stainless Steel, and Electrical Option available on request.  
With connection nut M8/M10, M10/M12 available on request.  
With M6 Side Nuts available on request.

# Omega Bracket

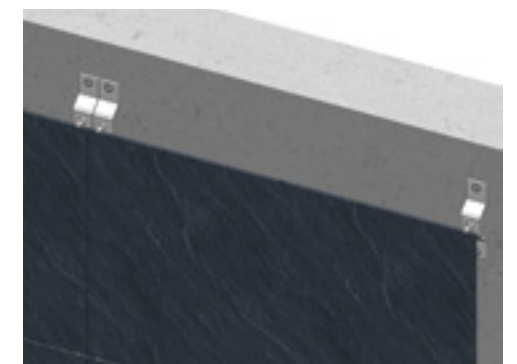
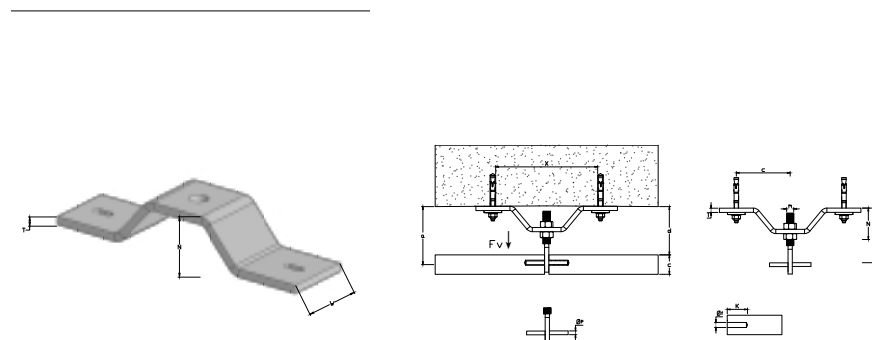


## FEATURES & BENEFITS

- Lock bolts with combi cross recessed head.      Electrogalvanized as per ASTM B 633
- For horizontal and vertical applications.      Standards (SC3), B5 1706 FE/ZN 12.
- Profiled for extra strength.      Noise insulating lining, rubber, black.
- Screws secured with anti-loss washer.      Noise reduction up to 18dB (A).
- Temperature resistance from -20 °C to +110 °C.      Material: steel.

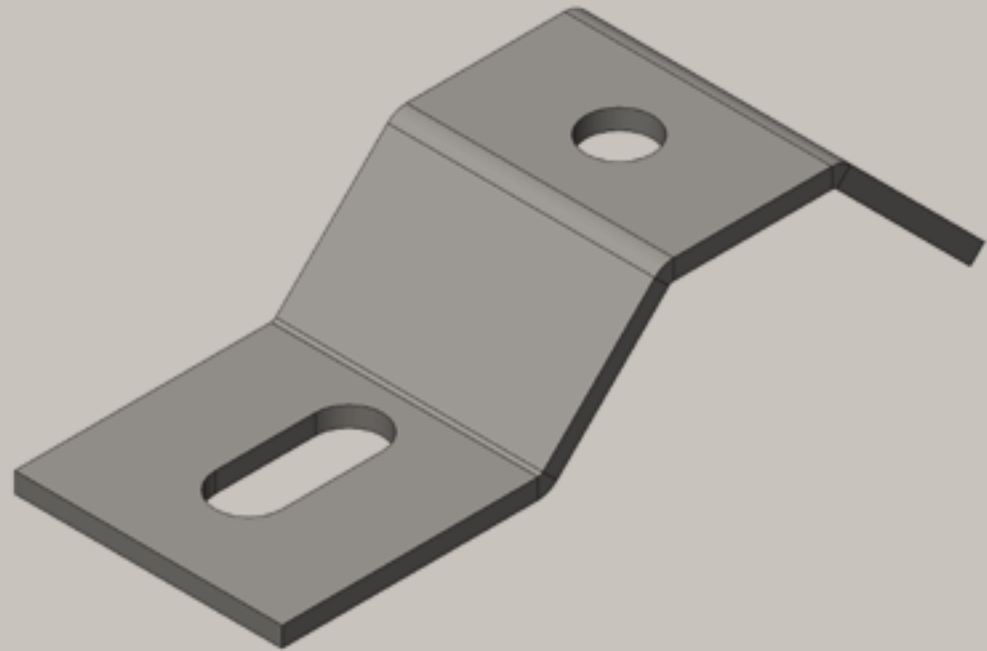


Codes	Width (W)	Bracket (T)	Offset	FHB	Ø Pin	SI hole
	mm	mm	(N)	A2-70	mm	
				A24-70		
700 1100-35.3.70	35	3	70	M8	4	6.5 x 22
700 1100-35.3.80	35	3	80	M8	4	6.5 x 22
700 1100-40.3.110	40	3	10	M8	4	6.5 x 22
700 1100-40.3.120	40	3	20	M8	4	6.5 x 22
700 1100-55.4.110	55	4	10	M10	5	8.5 x 22
700 1100-55.4.120	55	4	20	M10	5	8.5 x 22
700 1100-55.5.90	55	5	90	M12	6	10.5 x 22
700 1100-55.5.100	55	5	0	M12	6	10.5 x 22
700 1100-60.5.110	60	5	10	M12	6	10.5 x 22
700 1100-60.5.120	60	5	20	M12	6	10.5 x 22



Hot Dip Galvanized, Stainless Steel, and Electrical Option available on request.  
 With connection nut M8/M10, M10/M12 available on request.  
 With M6 Side Nuts available on request.

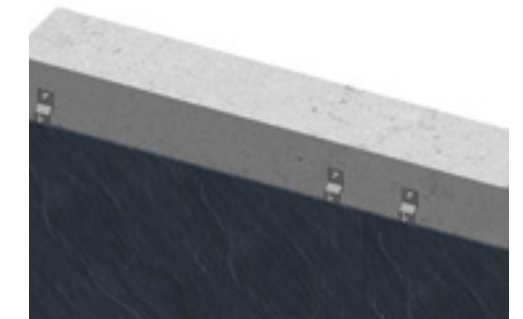
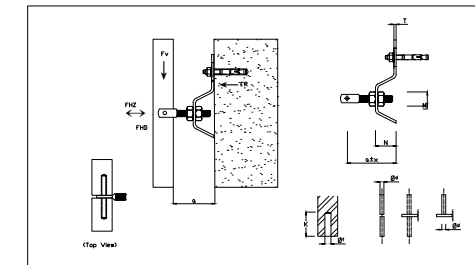
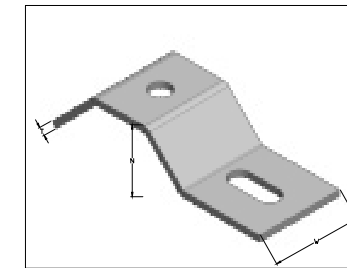
# Z-Bracket



Item No.	Width (W)	Thickness (T)	Offset (N)	FHB	ø PIN	SI hole
600-1100 -35.3.20	35	3	20	M8	4	6,5 x 22
600-1100 -40.3.30	40	3	30	M8	4	6,5 x 22
600-1100 -45.3.40	45	3	40	M8	4	6,5 x 22
600-1100 -50.3.50	50	3	50	M8	4	6,5 x 22
600-1100 -40.4.20	40	4	20	M10	5	8,5 x 22
600-1100 -40.4.30	40	4	30	M10	5	8,5 x 22
600-1100 -45.4.40	45	4	40	M10	5	8,5 x 22
600-1100 -50.4.50	50	4	50	M10	5	8,5 x 22
600-1100 -40.5.20	40	5	20	M12	6	8,5 x 22
600-1100 -45.5.30	45	5	30	M12	6	8,5 x 22
600-1100 -45.5.40	45	5	40	M12	6	8,5 x 22
600-1100 -50.5.50	50	5	50	M12	6	8,5 x 22

## FEATURES & BENEFITS

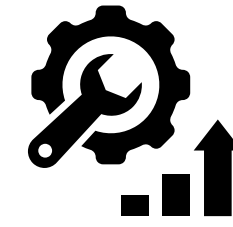
- Lock bolts with combi cross recessed head.
- For horizontal and vertical applications.
- Profiled for extra strength.
- Screws secured with anti-loss washer.
- Temperature resistance from -20 °C to +110 °C.
- Electrogalvanized as per ASTM B 633 Standards (SC3), B5 1706 FE/ZN 12.
- Noise insulating lining, rubber, black.
- Noise reduction up to 18dB (A).
- Material: steel.



Hot Dip Galvanized, Stainless Steel, and Electrical Option available on request.  
 With connection nut M8/M10, M10/M12 available on request.  
 With M6 Side Nuts available on request.

# OUR PRODUCTION ARM

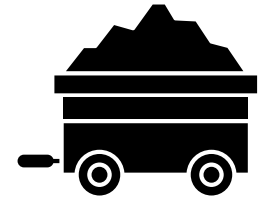
---



**Leading**  
Manufacturer And  
Fabricator



**Region**  
Exposure



**100%**  
Raw Material

# 0.5

---

Harmony Manufacturing is a leading manufacturer and fabricator of light steel construction products in the region, servicing the construction sector.

Products of Harmony Manufacturing are manufactured from quality raw material according to the relevant international standards to meet all kinds of construction projects requirements.



# Health And Safty

The Factory Management regard the health and safety of the employees, clients and all others that may be affected by their operations to be of a major importance.

In support of this, the management promotes health and safety throughout the factory's operations and endeavor to engender a positive attitude in all employees towards the prevention of accidents and maintenance of healthy working arrangements.



The Factory satisfies the requirements of the Health, Safety and related legislation by setting out the responsibilities of all levels of staff and the arrangements for carrying out those responsibilities and in particular do what is reasonably practicable to:

1. Maintains safe & healthy working conditions.
2. Ensures that all facilities and equipment are safe and properly maintained.
3. Provides products that can be applied and used safely and without risk to health.
4. Provides and maintain working procedures, that are safe and without risk to health, throughout the its operations in respect of: The use, handling, storage, transports and disposal of materials and substances, The use of factory equipment , Potential emergency situations, including first aid & fire and escape of substances.
5. Ensure the competence of employees by keeping trained and up tp date with the latest in the industry both technically and in terms of safety.

# Social Responsibility

Being socially responsible is a part of who we are and how we do our business. We aim to provide useful products and services, to provide jobs and development opportunities for our communities, and satisfaction through meaningful work.

We make a difference by acting on the values and principles of our societies and we inspire others to do at Harmony, we anticipate and reduce threats caused by environmental changes or natural disasters, and we are well adapted to significant social changes. We contribute to a more sustainable society by means of value and support to our consumers & our supply chains.



**WE ARE KEEN TO IDENTIFY WAYS THEY CAN IMPROVE OUR IMPACTS ON THE PEOPLE AND PLACES WE WORK.**

- Organizational governance: We promote accountability and transparency at all levels.
- Human care: We treat individuals with respect; and make efforts to help members of vulnerable groups.
- Labor practices: We provide just, safe and favorable conditions to workers
- Environment: At Harmony, we identify and improve environmental impacts of our operations, including the resource use of natural resources and waste disposal.

At Harmony, we are committed to continuous improvement ongoing learning, process review and innovative thinking that foster new initiatives; and better practices.

Our environmental programs evolve to meet today's changing needs while protecting resources for future generations.

## CONTACT INFORMATION

[www.harmony-egy.com](http://www.harmony-egy.com)  
[info@harmony-egy.com](mailto:info@harmony-egy.com)

Plot 230, Third Industrial Zone, 6th of October, Giza, Egypt  
المنطقة الصناعية الثالثة، القطعة ٢٣٠، مدينة 6 أكتوبر، الجيزة، مصر

+2 0111 521 3111  
+2 0121 0 11 2633