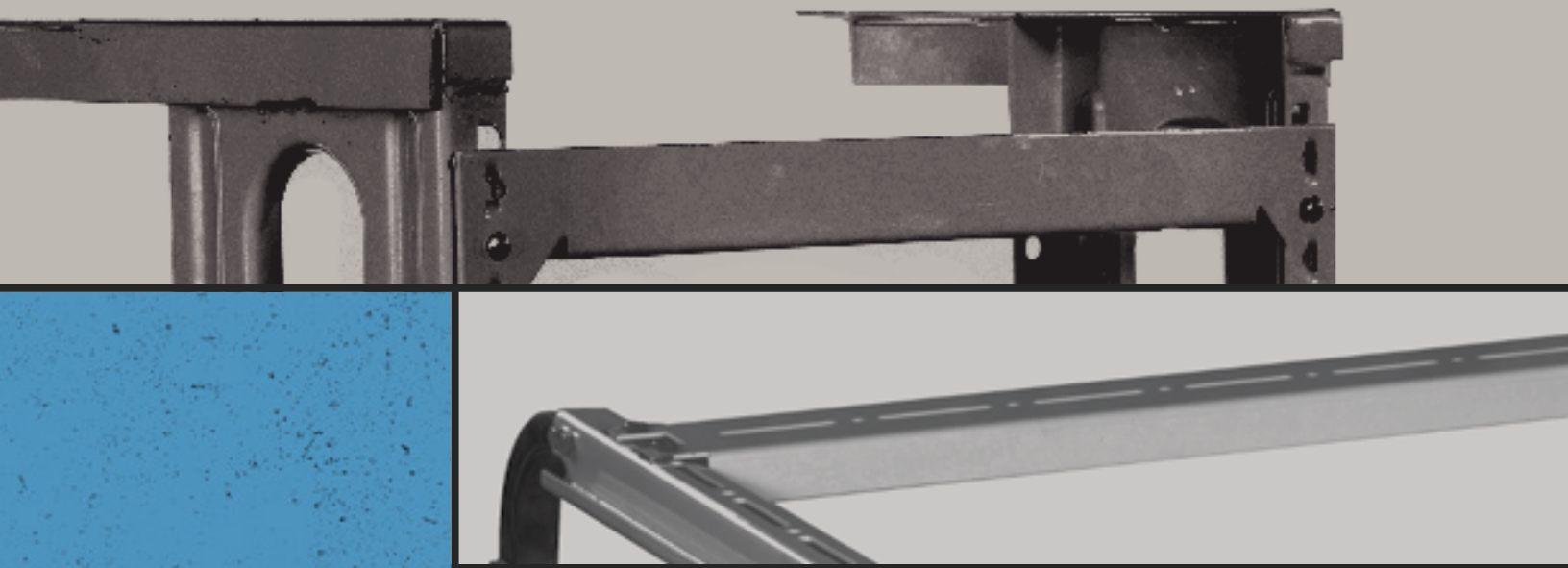


Products Catalogue



**PLUMBING
FIXATION
SYSTEM**



HARMONY[®]
SUPPLIER

QUALITY
EMPOWERS
YOU.

ABOUT HARMONY

0.1

Harmony Group is the national market leader in several sheet metal products and successfully develops new types of applications for sheet metal that can be used in various fields. The privately owned company based in Giza, Egypt, develops and manufactures high specialized products for different home appliances products.

The Factory is located in the 3rd industrial zone, 6th of October, Giza, Egypt. Harmony's facility covers a manufacturing area of 2000 m² where more than 250 hard working employee get the work done. Combining decades of technical experience with modern management. Harmony is constantly expanding its business.

CERTIFICATION

CERTIFICATES

ISO 9001:2015



ISO 14001:2015



Scan this QR Code with smartphone to verify the certificate

CERTIFICATE OF REGISTRATION



This is to certify that:

HARMONY
(ALAA OSAMA MAHMOUD AND HIS PARTNERS)

PLOT 230, THIRD INDUSTRIAL ZONE,
6TH OF OCTOBER, GIZA - EGYPT

Additional Site:
1, NEW MARWA BUILDING, AHMED TAYSEER STREET,
NASR CITY, EGYPT

the management system of the above organisation has been assessed and found to comply with the requirements of the management system standards detailed below

STANDARD

ISO 14001:2015

Environmental Management System

Certification Scope

Manufacturing of All Steel and Construction and Supports for Pipes and Process Components Products and Sheet Metal Fabrication.
Design, Supply, Installation, Testing, Commissioning & After Sales Service of All Types of HVAC (Heating, Ventilation and Air-Conditioning) Systems.
Design, Supply, Installation, Testing & Commissioning of All Types of Fire-Fighting Systems.

Certification Calendar

Certificate Number IAS2612144669	Date of Registration 26-Dec-2022	Validity **Validity of this certificate is subject to successful and timely completion of the annual surveillance audit.
Client ID HA2086	Valid From 26-Dec-2022	Note¹ : Certification cycle expiry date of this certificate is - 25-Dec-2025.
Revision No. 00	Valid Until 25-Dec-2023	Note² : Surveillance 01 will be due in the month of Nov-2023 and Surveillance 02 will be due in the month of Nov-2024.

**This certificate remains the property of SAGACI and shall have to be returned back when it has ceased to be valid, for whatsoever reason.
*Information about this certificate can be inquired at the official website of certification (www.sagaciert.com)



Authorized Signatory





ACCREDITED
Management System
Certification Body
19011

SAGACI CERTIFICATIONS PRIVATE LIMITED
www.sagaciert.com

This certificate has been issued by Sagar Certifications Pvt. Ltd., B-1, 3, Block 3, Sector 14, Gurgaon, Haryana, India. It is valid only for the scope of certification as stated in the certificate. This will be renewed regularly by SAGACI. The use of ISO accreditation mark indicates accreditation in respect of those activities covered by the accreditation certificate. Further clarification regarding the scope of this certificate and verification of the certificate is available through SAGACI or www.sagaciert.com.
Phone: 011-43692111, Email: info@sagaciert.com, Web: www.sagaciert.com

ISO 45001:2018



Scan this QR Code with smartphone to verify the certificate

CERTIFICATE OF REGISTRATION



This is to certify that:

HARMONY
(ALAA OSAMA MAHMOUD AND HIS PARTNERS)

PLOT 230, THIRD INDUSTRIAL ZONE,
6TH OF OCTOBER, GIZA - EGYPT

Additional Site:
1, NEW MARWA BUILDING, AHMED TAYSEER STREET,
NASR CITY, EGYPT

the management system of the above organisation has been assessed and found to comply with the requirements of the management system standards detailed below

STANDARD

ISO 45001:2018

Occupational Health & Safety Management System

Certification Scope

Manufacturing of All Steel and Construction and Supports for Pipes and Process Components Products and Sheet Metal Fabrication.
Design, Supply, Installation, Testing, Commissioning & After Sales Service of All Types of HVAC (Heating, Ventilation and Air-Conditioning) Systems.
Design, Supply, Installation, Testing & Commissioning of All Types of Fire-Fighting Systems.

Certification Calendar

Certificate Number IAS2612454470	Date of Registration 26-Dec-2022	Validity **Validity of this certificate is subject to successful and timely completion of the annual surveillance audit.
Client ID HA2086	Valid From 26-Dec-2022	Note¹ : Certification cycle expiry date of this certificate is - 25-Dec-2025.
Revision No. 00	Valid Until 25-Dec-2023	Note² : Surveillance 01 will be due in the month of Nov-2023 and Surveillance 02 will be due in the month of Nov-2024.

**This certificate remains the property of SAGACI and shall have to be returned back when it has ceased to be valid, for whatsoever reason.
*Information about this certificate can be inquired at the official website of certification (www.sagaciert.com)



Authorized Signatory





ACCREDITED
Management System
Certification Body
19011

SAGACI CERTIFICATIONS PRIVATE LIMITED
www.sagaciert.com

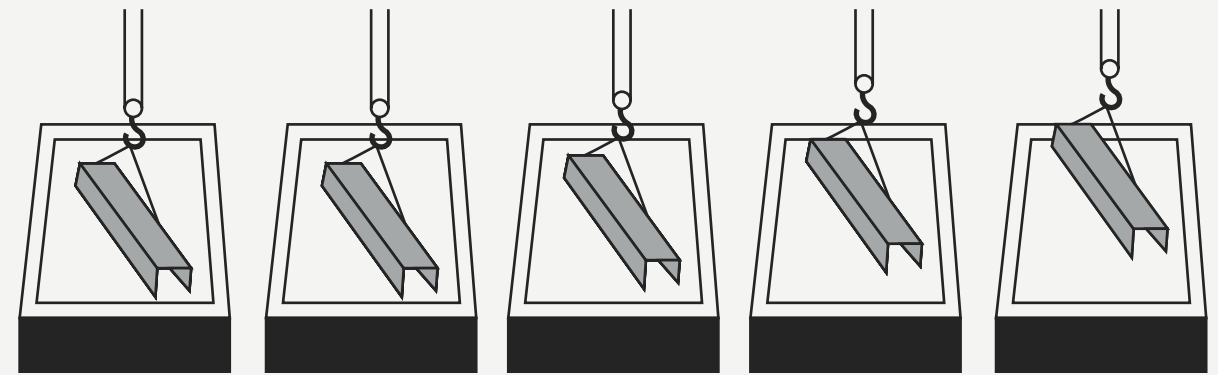
This certificate has been issued by Sagar Certifications Pvt. Ltd., B-1, 3, Block 3, Sector 14, Gurgaon, Haryana, India. It is valid only for the scope of certification as stated in the certificate. This will be renewed regularly by SAGACI. The use of ISO accreditation mark indicates accreditation in respect of those activities covered by the accreditation certificate. Further clarification regarding the scope of this certificate and verification of the certificate is available through SAGACI or www.sagaciert.com.
Phone: 011-43692111, Email: info@sagaciert.com, Web: www.sagaciert.com

Galvanization Methodology.

Hot-dip galvanizing is the process of immersing iron or steel in a bath of molten zinc to produce a corrosion resistant, multi-layered coating of zinc-iron alloy and zinc metal. While the steel is immersed in the zinc, a metallurgical reaction occurs between the iron in the steel and the molten zinc. This reaction is a diffusion process, so the coating forms perpendicular to all surfaces creating a uniform thickness throughout the part.

FIRST STEP

SURFACE PREPARATION



Caustic Cleaning

Rinsing

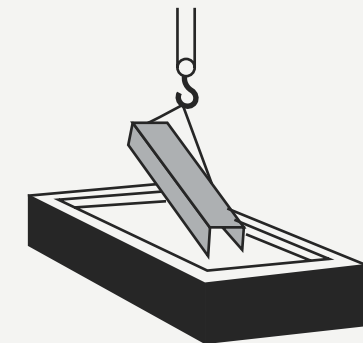
Pickling

Rinsing

Flux Solution

SECOND STEP

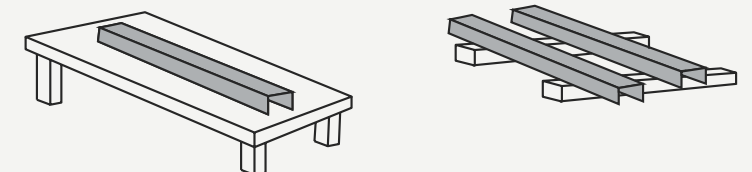
GALVANIZING Molten Zinc Bath



FINAL STEP

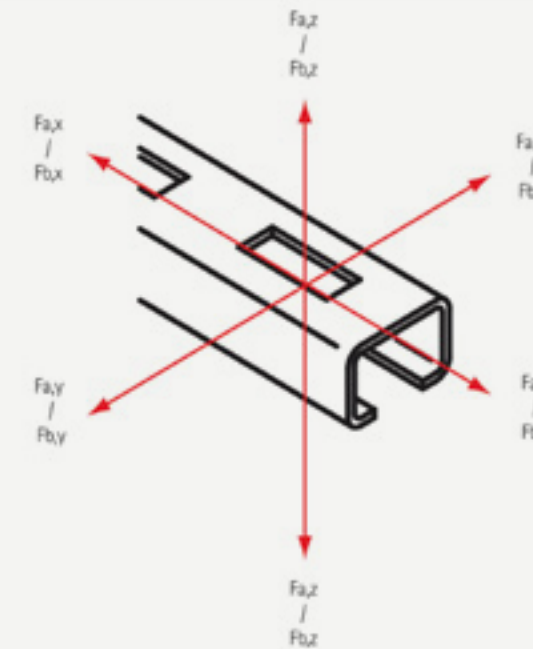
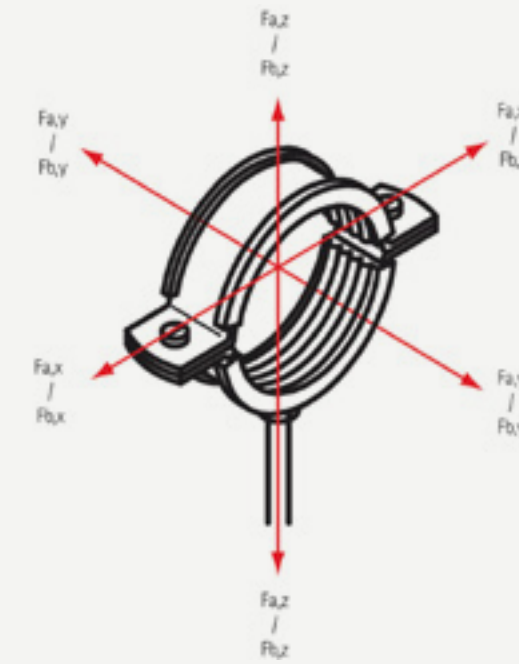
INSPECTION

Cooling and
Quality Assurance



Maximum Allowed Load.

From most of our products a maximum allowed load is included in the article tables. Stand values are determined by the measuring method described in the testing prescriptions RAL-GZ 655, which is set up by the 'Gütegemeinschaft Rohrbefestigung!'. If the product is provided with the 'RAL-Gütezeichen', the test results are checked by an independent testing institute.



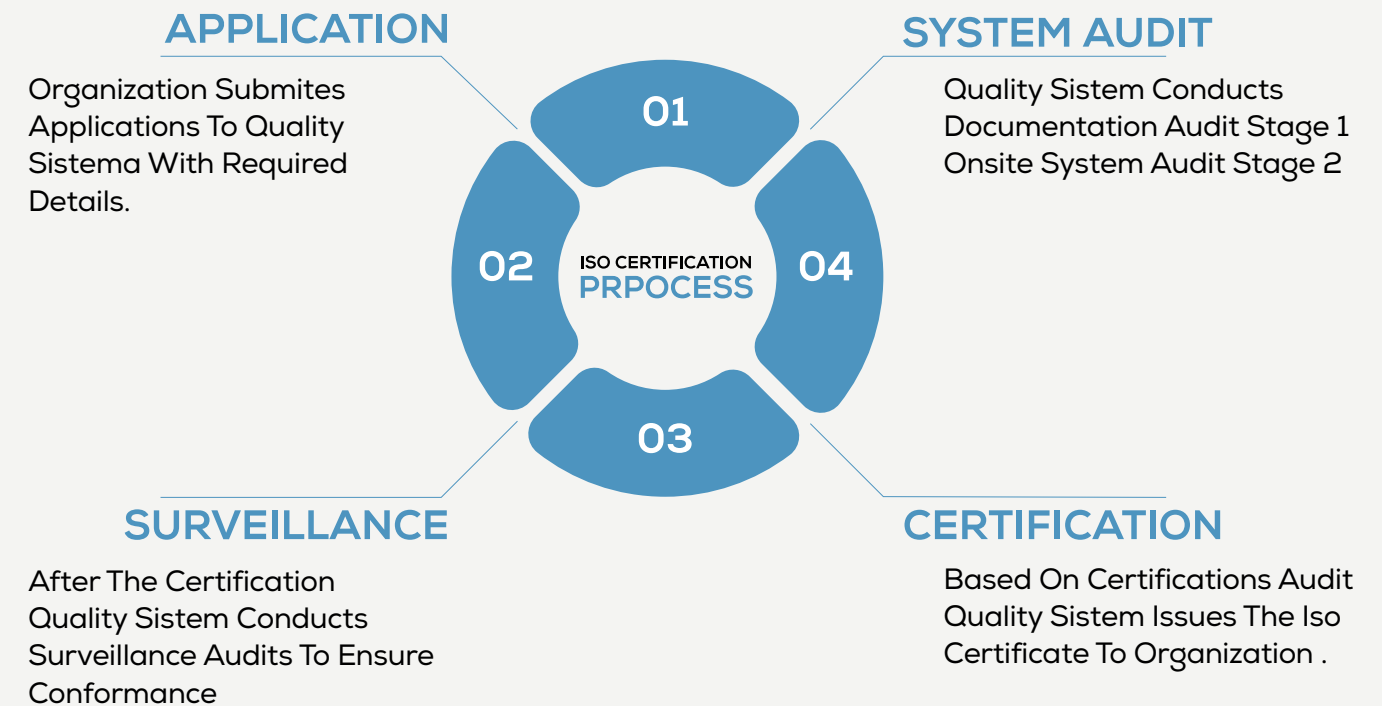
Force Directions (F) x, y, and z (at 20°C)

Fa = Maximum Allowe Load
 Fb = Breaking Load
 For plastic clamps the breaking load is included.

Commitment To Quality

Our commitment to quality is clearly revealed in the way we do our business; our processes, our close interaction with our clients as well By delivering superior products tailored to the specific construction needs, ambitious solutions, and an outstanding as the strict product inspection procedures.

To achieve this, we have implemented quality systems & processes that are continually being improved to satisfy our customer's needs



PLUMBING FIXATION SYSTEM

1.0

PLUMBING FIXATION SYSTEM

1.1

BIS CLAMPS

- 1.1.1 EPDM Lined Split Clamp

PAGE 19

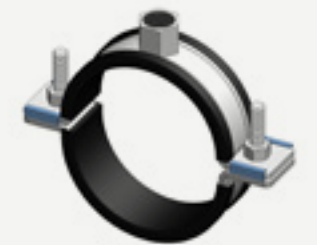


1.2

BIS INDUSTRIAL CLAMPS

- 1.2.1 BIS Heavy Duty Clamp HD1501 (M8/10, M10/12) (BUP1000)
- 1.2.2 BIS Heavy Duty Clamp HD1501 (M16) (BUP1000)

PAGE 21



1.3

BIS Sprinkler Clamp

- 1.3.1 Sprinkles Clamp

PAGE 25



1.0 PLUMBING FIXATION SYSTEM

1.4

U Bolt Clamps

- 1.4.1 EPDM Lined U Bolt
- 1.4.2 EPDM Two Bolt Clamp



PAGE 27

1.5

BIS Industrial Saddle

- 1.5.1 EPDM Lined Riser Clamp



PAGE 31

1.6

U-STRAP CLAMP

- 1.6.1 EPM Lined U-Strap Clamp (M12-M18)
- 1.6.2 EPM Lined U-Strap Clamp (M12-M18)



PAGE 33

1.0 PLUMBING FIXATION SYSTEM

1.7

Clevis Hangers

- 1.7.1 EPDM Lined Clevis Hanger

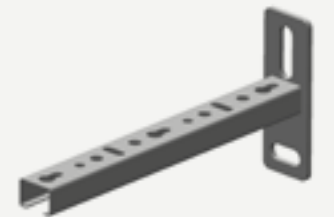


PAGE 37

1.8

Wall Cantilivers

- 1.7.1 BIS RapidRail Cantiliver Arms(BUP1000)
- 1.7.2 BIS RapidRail Wall Plates



PAGE 39

1.9

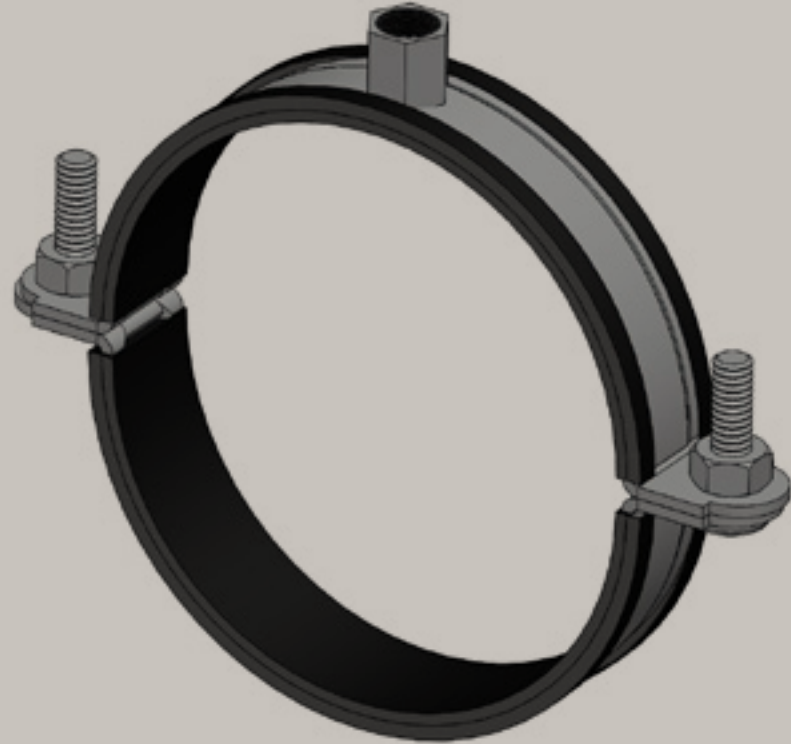
Strut Clamps

- 1.9.1 BIS Strut Clamps With Lining
- 1.9.2 BIS Strut Clamps



PAGE 43

EPDM LINED SPLIT CLAMP



FEATURES & BENEFITS

Lock bolts with combi cross recessed head.

Electrogalvanized as per ASTM B 633

For horizontal and vertical applications.

Standards (SC3), B5 1706 FE/ZN 12.

Profiled for extra strength.

Noise insulating lining, rubber, black.

Screws secured with anti-loss washer.

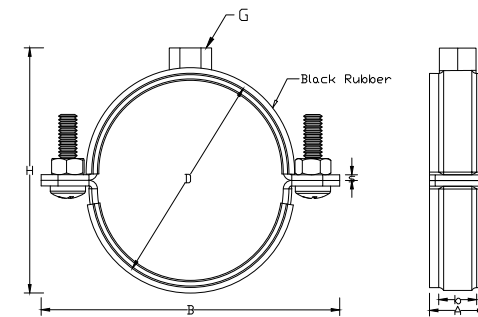
Noise reduction up to 18dB (A).

Temperature resistance from -20 °C to +110 °C.

Material: steel.

 **HARMONY**
SUPPLIER

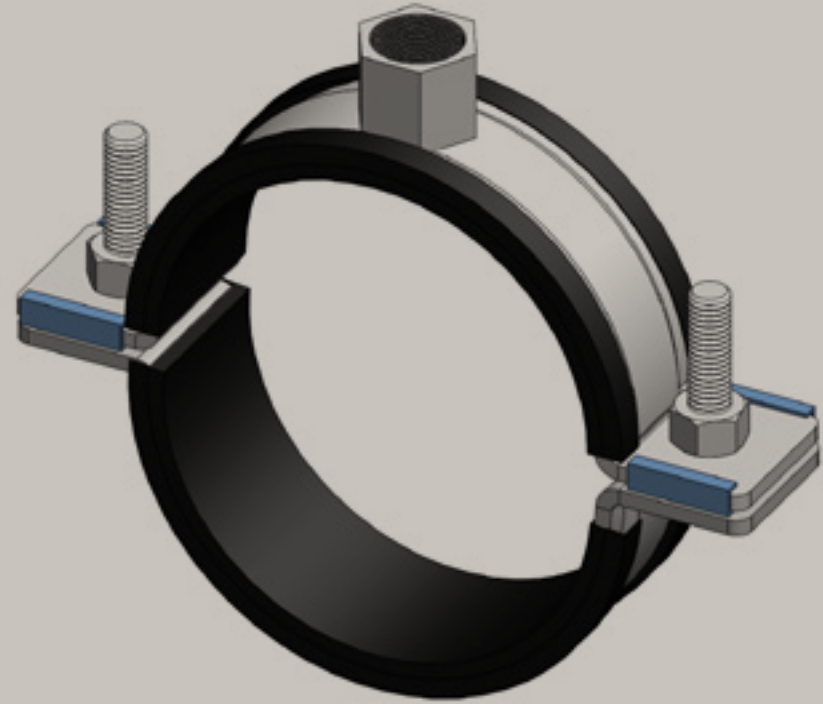
Part No.	D (mm)	D (")	Dia (mm)	G	B (mm)	H (mm)	h (mm)	b x S (mm)	Fa,z (N)	Pack1
DM C21 5 018	15-19	3/8	15	M8	60	36	26	19 x 1.2	1500	450
DM C21 5 022	20-25	1/2	22	M8	65	43	29	19 x 1.2	1500	400
DM C21 5 028	26-30	3/4	28	M8	70	50	32	19 x 1.2	1500	350
DM C21 5 035	32-36	1	35	M8	85	56	36	19 x 1.2	1500	300
DM C21 5 040	38-43	1 1/4	42	M8	92	63	39	19 x 1.2	1500	250
DM C21 5 048	47-51	1 1/2	48	M8	98	72	42	19 x 1.2	1500	200
DM C21 5 054	53-58		54	M8	104	75	45	19 x 1.2	1500	200
DM C21 5 060	60-64	2	60	M8	110	81	48	19 x 1.2	1500	125
DM C21 5 063	63-66		63	M8	115	88	51	19 x 1.2	1500	125
DM C21 5 070	68-72		70	M8	120	91	53	19 x 1.2	1500	125
DM C21 5 075	74-80	2 1/2	75	M8/M10	125	96	56	19 x 1.2	2,000	100
DM C21 5 083	81-86		83	M8/M10	139	108	60	19 x 1.2	2,000	100
DM C21 5 090	92-97	3	90	M8/M10	146	111	63	19 x 1.2	2,000	100
DM C21 5 100	99-105	3 1/2	100	M8/M10	156	121	68	19 x 1.2	2,000	75
DM C21 5 110	107-112		110	M8/M10	166	131	73	19 x 1.2	2,000	75
DM C21 5 115	113-118	4	115	M8/M10	171	136	76	19 x 1.2	2,000	70
DM C21 5 125	125-130		125	M8/M10	181	146	81	19 x 1.2	2,000	70
DM C21 5 133	131-137		133	M8/M10	184	154	85	19 x 1.2	2,000	50
DM C21 5 140	137-142	5	140	M8/M10	196	161	88	19 x 1.2	2,000	50
DM C21 5 150	148-153		150	M8/M10	206	171	93	19 x 1.2	2,000	50
DM C21 5 160	159-166		160	M8/M10	216	181	98	19 x 1.2	2,000	50
DM C21 5 168	168-172	6	168	M8/M10	224	189	102	19 x 1.2	2,000	50
DM C21 5 200	200-212		200	M8/M10	256	221	118	19 x 1.2	3,000	50
DM C21 5 220	215-220	8	220	M8/M10	276	241	128	19 x 1.2	3,000	40
DM C21 5 250	248-252		250	M8/M10	306	271	143	19 x 1.2	3,000	40
DM C21 5 315	313-318		315	M8/M10	371	336	176	19 x 1.2	3,000	25



Hot Dip Galvanized, Stainless Steel, and Electrical Foption available on request.
With connection nut M8/M10, M10/M12 available on request.
With M6 Side Nuts available on request.



BIS Heavy Duty Clamp HD1501 (M8-12) (BUP1000)



FEATURES & BENEFITS

Two-Part clamp with two locking bolts

Bolts secured with anti-loss washer

With CO₂ welded connection nut

Noise insulating lining, EPDM rubber, black

Part of the BIS UltraProtect® 1000 system

Sound insulating lining according DIN 4109

Heavy design & tested for fire safety

Also available: noise insulating lining of

silicone rubber (reddish brown), heat

resistant up to +200 °C (A 35 15)

age resistant lining

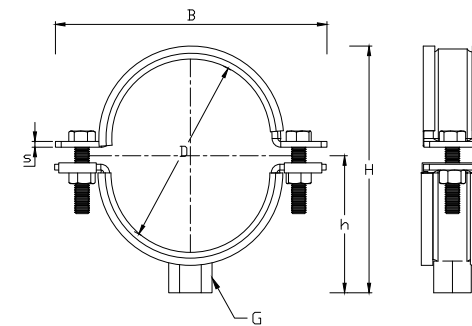
suitable for in-andoutdoor applications

stands min. 1,000 hours salt spray test

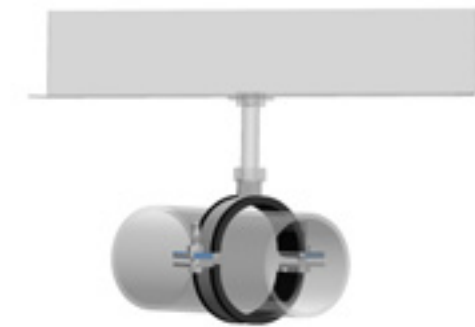
(max. 5% red rust) according to ISO 9227

 **HARMONY**
SUPPLIER

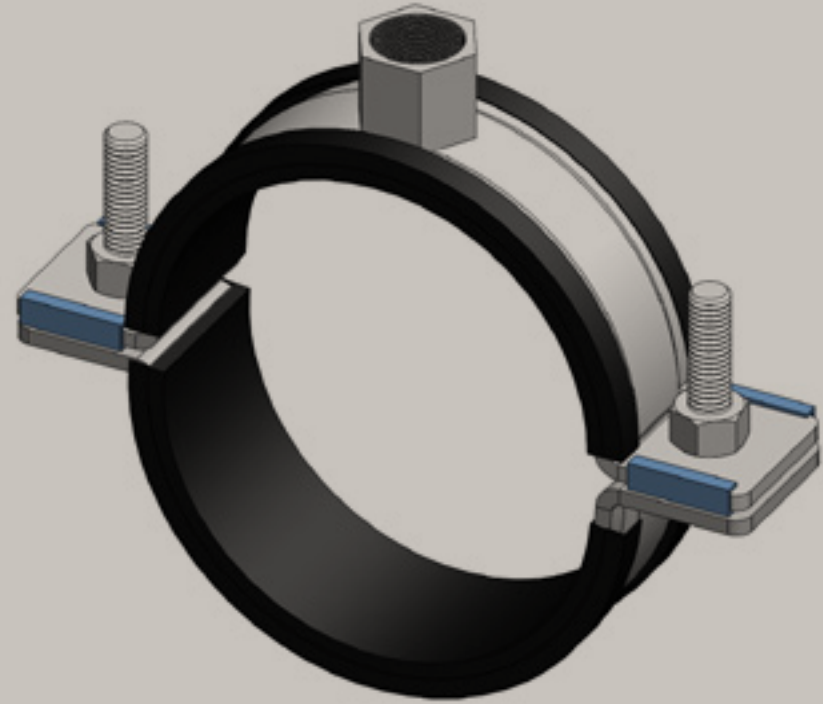
Part No.	D (mm)	D (")	DN (mm)	G	B (mm)	H (mm)	h (mm)	b x s (mm)	Fa,z (N)	Pack1
3303 8 019	15-19	3/8	10	M8/M10	75	46	32	30x2.5	2,100 RAL2	25
3303 8 023	19-23	1/2	15	M8/M10	78	50	34	30x2.5	2,100 RAL2	25
3303 8 030	25-30	3/4	20	M8/M10	84	57	38	30x2.5	2,100 RAL2	25
3303 8 036	31-36	1	25	M8/M10	91	63	41	30x2.5	2,100 RAL2	25
3303 8 042	37-42			M8/M10	98	69	44	30x2.5	2,100 RAL2	25
3303 8 045	40-45	1 1/4	32	M8/M10	101	72	45	30x2.5	2,100 RAL2	25
3303 8 052	47-52	1 1/2	40	M8/M10	109	79	49	30x2.5	2,100 RAL2	25
3303 8 058	53-58			M8/M10	115	85	52	30x2.5	2,100 RAL2	25
3303 8 065	59-65	2	50	M8/M10	122	92	55	30x2.5	2,100 RAL2	25
3303 8 071	66-71			M8/M10	129	98	58	30x2.5	2,100 RAL2	25
3303 8 078	72-78	2 1/2	65	M10/M12	136	115	70	30x3	4,000 RAL2	25
3303 8 085	79-85			M10/M12	144	122	75	30x3	4,000 RAL2	25
3303 8 092	86-92	3	80	M10/M12	152	129	78	30x3	4,000 RAL2	25
3303 8 106	98-106			M10/M12	165	143	85	30x3	4,000 RAL2	25
3303 8 116	108-116	4	100	M10/M12	175	153	90	30x3	4,000 RAL2	25
3303 8 123	116-123			M10/M12	182	160	94	30x3	4,000 RAL2	25
3303 8 133	125-133			M10/M12	193	170	99	30x3	4,000 RAL2	25
3303 8 140	132-140	5	125	M10/M12	200	177	102	30x3	4,000 RAL2	25
3303 8 154	148-154			M10/M12	215	191	109	30x3	4,000 RAL2	15
3303 8 169	159-169	6	150	M10/M12	240	207	117	38x4	8,200 RAL2	15
3303 8 183	173-183			M10/M12	254	221	124	38x4	8,200 RAL2	15
3303 8 202	192-202			M10/M12	274	240	133	38x4	8,200 RAL2	15
3303 8 219	208-219			M10/M12	290	256	141	38x4	8,200 RAL2	15
3303 8 227	217-227	8	200	M10/M12	299	265	146	38x4	8,200 RAL2	2



Hot Dip Galvanized, Stainless Steel, and Electrical Option available on request.
With connection nut M8/M10, M10/M12 available on request.
With M6 Side Nuts available on request.



BIS Heavy Duty Clamp HD1501 (M16) (BUP1000)



FEATURES & BENEFITS

Two-Part clamp with two locking bolts

Bolts secured with anti-loss washer

With CO₂ welded connection nut

Noise insulating lining, EPDM rubber, black

Part of the BIS UltraProtect® 1000 system

Sound insulating lining according DIN 4109

Heavy design & tested for fire safety

Also available: noise insulating lining of

silicone rubber (reddish brown), heat

resistant up to +200 °C (A 35 15)

age resistant lining

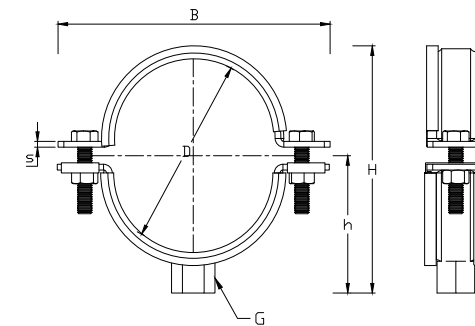
suitable for in-andoutdoor applications

stands min. 1,000 hours salt spray test

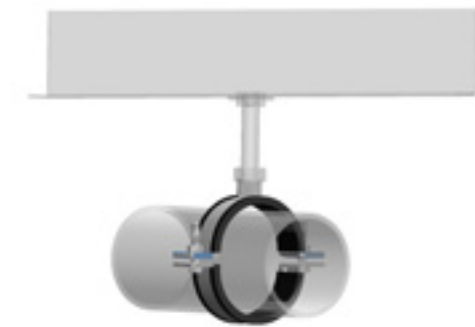
(max. 5% red rust) according to ISO 9227

 **HARMONY**
SUPPLIER

Part No.	D (mm)	D (")	DN (mm)	G	B (mm)	H (mm)	h (mm)	b x s (mm)	Fa,z (N)	Pack1
3316 8 169	159-169	6	150	M16	254	220	120	38 x 4	3.800 RAL2	15
3316 8 188	178-188			M16	274	239	130	38 x 4	3.800 RAL2	15
3316 8 204	194-204			M16	290	255	138	38 x 4	3.800 RAL2	15
3316 8 213	203-213			M16	299	264	143	38 x 4	3.800 RAL2	15
3316 8 227	217-227	8	200	M16	322	278	150	38 x 4	3.800 RAL2	2
3316 8 250	240-250			M16	345	302	163	38 x 4	3.800 RAL1	2
3316 8 275	265-275	10	250	M16	367	327	175	48 x 5	9.200 RAL1	2
3316 8 325	315-325	12	300	M16	414	374	198	48 x 5	9.200 RAL1	2
3316 8 364	354-364	14	350	M16	453	412	217	48 x 5	9.200 RAL1	2
3316 8 408	398-408	16	400	M16	497	456	239	48 x 5	9.200 RAL1	2
3316 8 458	448-458	18	450	M16	548	506	264	48 x 5	9.200 RAL1	2
3316 8 509	499-509	20	500	M16	599	557	289	48 x 5	9.200 RAL1	2



Hot Dip Galvanized, Stainless Steel, and Electrical Option available on request.
With connection nut M8/M10, M10/M12 available on request.
With M6 Side Nuts available on request.



BIS Sprinkler Clamps- EPDM Lined Sprinkler Clamp



FEATURES & BENEFITS

Firefighting and sprinkler installations

Easy to install and adjust, without tools

High load capacity due to one-piece design and side notches.

Noise reduction up to 18dB (A)

Noise insulating lining, EPDM, black

Knurled swivel nut allows vertical pipe alignment during and after installation

Material: steel

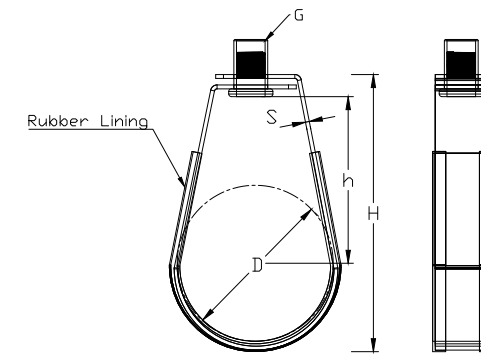
Pre-galvanized ASTM A 653 G90

Designed to meet MSS standard SP-

58 type10 and SP-69



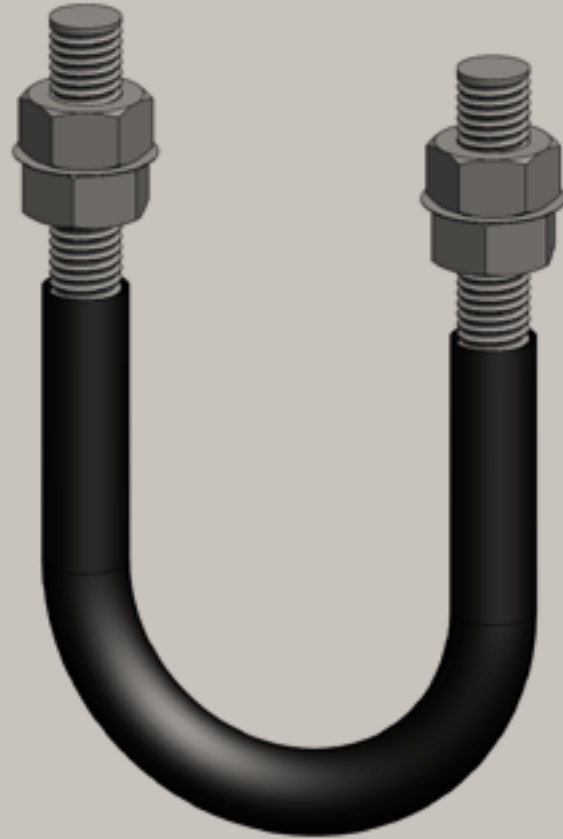
Part No.	D (mm)	D (")	G	h (mm)	b x s (mm)	Fa,z Appr. (N)	Pack1
DM C21 7 028	28	3/4	M10	61	20 X 15	3,000 FM , UL	400
DM C21 7 035	35	1	M10	68	20 X 15	3,000 FM , UL	300
DM C21 7 040	42	1 1/4	M10	61	20 X 15	3,000 FM , UL	250
DM C21 7 048	48	1 1/2	M10	81	20 X 15	3,000 FM , UL	200
DM C21 7 060	60	2	M10	100	20 X 15	3,000 FM , UL	180
DM C21 7 075	73	2 1/2	M10	120	32 X 2	4,500 FM , UL	75
DM C21 7 090	89	3	M10	135	32 X 2	4,500 FM , UL	60
DM C21 7 100	105	3 1/2	M10	150	32 X 2	4,500 FM , UL	40
DM C21 7 115	115	4	M10	165	32 X 2.5	5,500 FM , UL	40
DM C21 7 140	140	5	M12	195	40 X 2.5	6,500 FM , UL	25
DM C21 7 168	168	6	M12	320	40 X 3	7,500 FM , UL	20
DM C21 7 219	219	8	M12	290	50 X 3	9,000 FM , UL	10
DM C21 7 273	273	10	M12	315	50 X 3	9,000 FM , UL	8



Hot Dip Galvanized, Stainless Steel, and Electrical Foption available on request.



EPDM Lined U-Bolt Clamps



FEATURES & BENEFITS

High load capacity due to one-piece design

Supplied with two or four nuts & two washes

Material: steel

Electro galvanized as per ASTM B 633

Standards (SC3), BS 1706 FE/ZN 12

Noise insulating lining, EPDM, black

Designed to meet MSS Standard SP-

58, type 24 and SP-69

Special U bolts with longer tangents

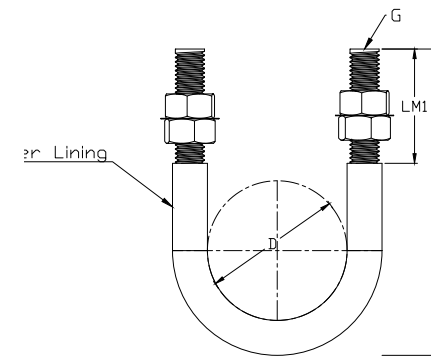
and threads available on request

Temperature resistance from -20oC

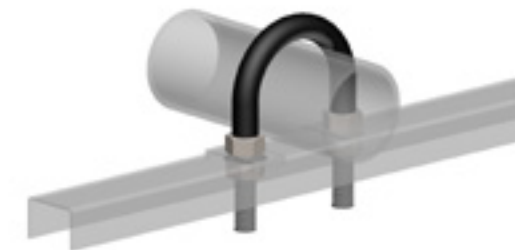
temp to +110oC

 **HARMONY**
SUPPLIER

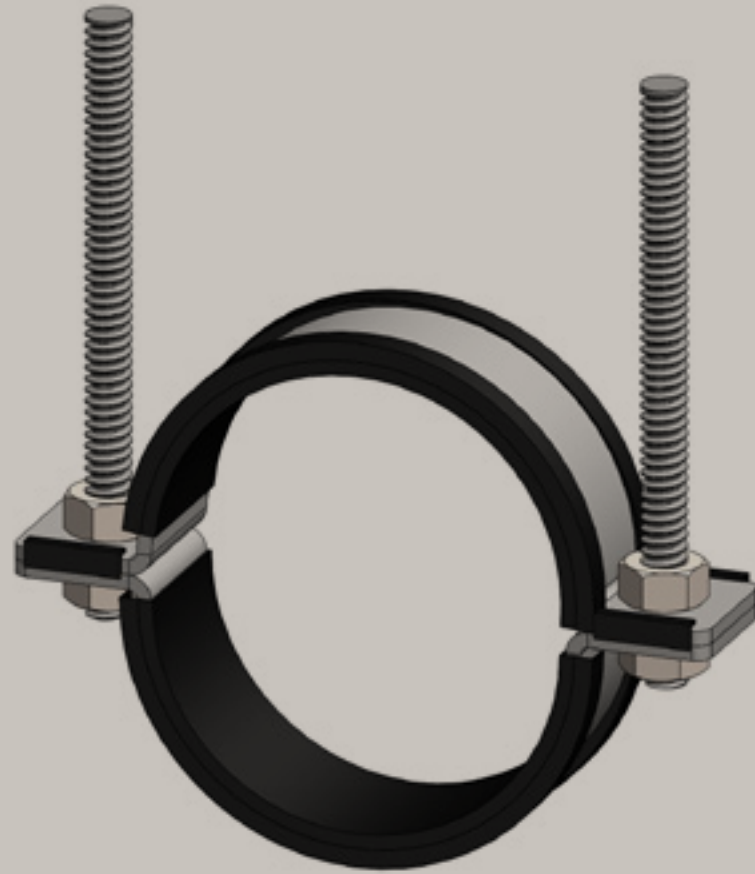
Part No.	D (mm)	D (")	G	H (mm)	LM1 (mm)	Faz (N)	Pack1
DM C24 4 022	21	1/2	M10	65	50	6,000	250
DM C24 4 028	27	3/4	M10	77	50	6,000	200
DM C24 4 035	34	1	M10	85	50	6,000	200
DM C24 4 042	43	1 1/2	M10	93	50	6,000	175
DM C24 4 048	48	1 1/2	M10	100	50	6,000	150
DM C24 4 060	60	2	M10	110	50	6,000	150
DM C24 4 075	76	2 1/2	M12	127	50	10,000	100
DM C24 4 090	89	3	M12	140	50	10,000	75
DM C24 4 115	115	4	M12	165	50	10,000	75
DM C24 4 140	140	5	M12	190	50	10,000	70
DM C24 4 168	168	6	M12	220	50	10,000	50
DM C24 4 219	219	8	M16	295	75	20,000	20
DM C24 4 273	273	10	M20	370	100	32,000	10
DM C24 4 324	324	12	M20	420	100	32,000	10
DM C24 4 356	356	14	M20	455	100	32,000	10
DM C24 4 406	406	16	M20	505	100	32,000	10
DM C24 4 457	457	18	M24	555	100	45,000	5
DM C24 4 508	508	20	M24	605	100	45,000	5
DM C24 4 610	610	24	M24	710	100	45,000	5



Hot Dip Galvanized, Stainless Steel, and Electrical Option available on request.
With connection nut M8/M10, M10/M12 available on request.
With M6 Side Nuts available on request.



EPDM Lined Two Bolt Clamp

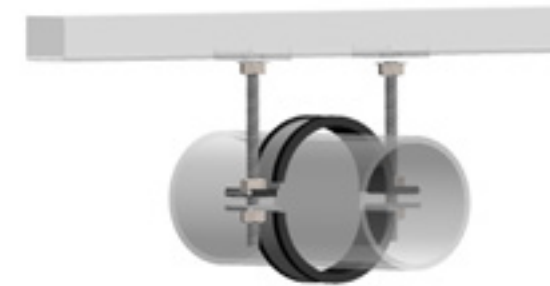
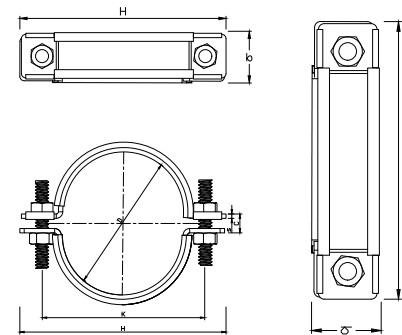


FEATURES & BENEFITS

- Act as a horizontal support for heavier pipes
- Material: steel
- 2 bolt arrangement equals sturdier support
- Noise insulating lining, EPDM, black
- Electro galvanized as per ASTM B 633
- Noise reduction up to 18dB (A)
- Standards (SC3), BS 1706 FE/ZN 12
- Designed to meet MSS Standard SP-58-2002, type 4 and SP-69
- temperature resistance from -20 °C to +110 °C

 **HARMONY**
SUPPLIER

Part No.	D (")	Bolt	bxh (mm)	K (mm)	H (mm)	C (mm)	Fa.z (N)	Pack1
DMC212 022	1/2"	M10	25x5	68	97	12	1,700	60
DMC212 028	3/4"	M10	25x5	76	105	12	1,700	60
DMC212 035	1"	M10	25x5	84	113	12	1,700	50
DMC212 040	1 1/4"	M10	25x5	92	121	12	1,700	50
DMC212 048	1 1/2"	M10	25x5	98	127	12	1,700	40
DMC212 060	2"	M10	25x5	116	156	16	1,700	35
DMC212 075	2 1/2"	M12	25x6	142	182	16	4,000	35
DMC212 090	3"	M12	25x6	156	196	16	4,000	30
DMC212 100	3 1/2"	M12	25x6	168	208	16	4,000	30
DMC212 115	4"	M12	25x6	180	220	19	4,000	25
DMC212 140	5"	M16	40x6	214	252	19	6,000	20
DMC212 168	6"	M16	40x6	242	290	22	6,000	15
DMC212 220	8"	M16	40x9	152	352	25	11,000	10
DMC212 273	10"	M16	50x9	358	406	25	12,000	5
DMC212 323	12"	M20	50x12	430	490	25	15,000	4
DMC212 355	14"	M20	50x12	480	546	28	15,000	4
DMC212 406	16"	M20	60x16	532	597	28	22,000	2
DMC212 457	18"	M20	60x16	610	686	32	22,000	2
DMC212 508	20"	M20	60x16	680	776	35	22,000	1
DMC212 610	24"	M20	60x16	780	876	42	22,000	1



Hot Dip Galvanized, Stainless Steel, and Electrical Option available on request.
With connection nut M8/M10, M10/M12 available on request.
With M6 Side Nuts available on request.

EPDM Lined Riser Clamp



FEATURES & BENEFITS

Designed to act as a rigid support or guide for vertical pipes

Suitable for use with all types of pipes

Material: steel

Electrogalvanized as per ASTM B 633

Noise insulating lining, EPDM, black

Standards (SC3), BS 1706 FE/ZN 12

Temperature resistance from -20 °C

to +110 °C

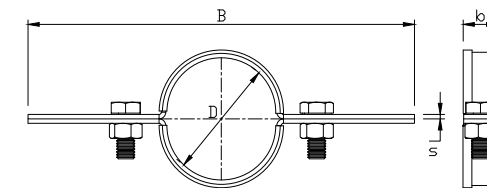
Noise reduction up to 18dB (A)

Designed to meet MSS Standard SP-

58-2002, type 8 and SP-69

 **HARMONY**
SUPPLIER

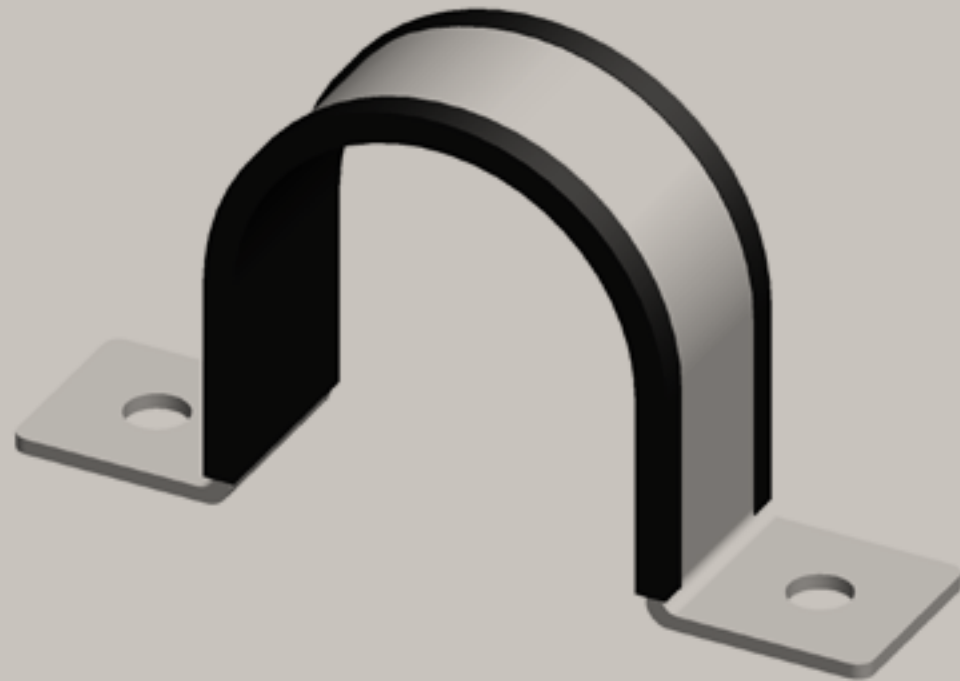
Part No.	D	Bolt	B	b x s	Fa,z	Pack1
	(")		(mm)	(mm)	(N)	
DM C11 2 022	1/2	M10	205	25 x 5	1,700	60
DM C11 2 028	3/4	M10	215	25 x 5	1,700	60
DM C11 2 035	1	M10	235	25 x 5	1,700	50
DM C11 2 040	1 1/4	M10	265	25 x 5	1,700	50
DM C11 2 048	1 1/2	M10	265	25 x 5	1,700	40
DM C11 2 060	2	M10	265	25 x 5	1,700	35
DM C11 2 075	2 1/2	M12	295	25 x 6	4,000	35
DM C11 2 090	3	M12	295	25 x 6	4,000	30
DM C11 2 100	3 1/2	M12	335	25 x 6	4,000	30
DM C11 2 115	4	M12	335	25 x 6	4,000	25
DM C11 2 140	5	M16	335	40 x 6	6,000	20
DM C11 2 168	6	M16	385	40 x 6	6,000	15
DM C11 2 220	8	M16	475	40 x 10	11,000	10
DM C11 2 273	10	M16	525	50 x 10	12,000	5
DM C11 2 323	12	M20	585	50 x 12	15,000	4
DM C11 2 355	14	M20	615	50 x 12	15,000	4
DM C11 2 406	16	M20	665	60 x 16	22,000	2
DM C11 2 457	18	M20	715	60 x 16	22,000	2
DM C11 2 508	20	M20	765	60 x 16	22,000	1
DM C11 2 610	24	M20	885	60 x 16	22,000	1



Hot Dip Galvanized, Stainless Steel, and Electrical Option available on request.



EPDM Lined U-Strap Clamp (M8-M10)



FEATURES & BENEFITS

For mounting plain or insulated pipes

Slotted holes on both sides for installation

Material: steel

Electro galvanized as per ASTM B 633

Standards (SC3), BS 1706 FE/ZN 12

temperature resistance from -20 °C

to +110 °C

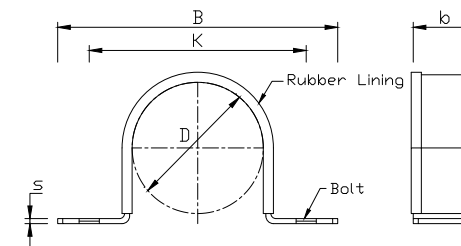
noise insulating lining, EPDM, black

noise reduction up to 18dB (A)

designed to meet MSS Standard SP-58, type 26 and SP-69

 **HARMONY**
SUPPLIER

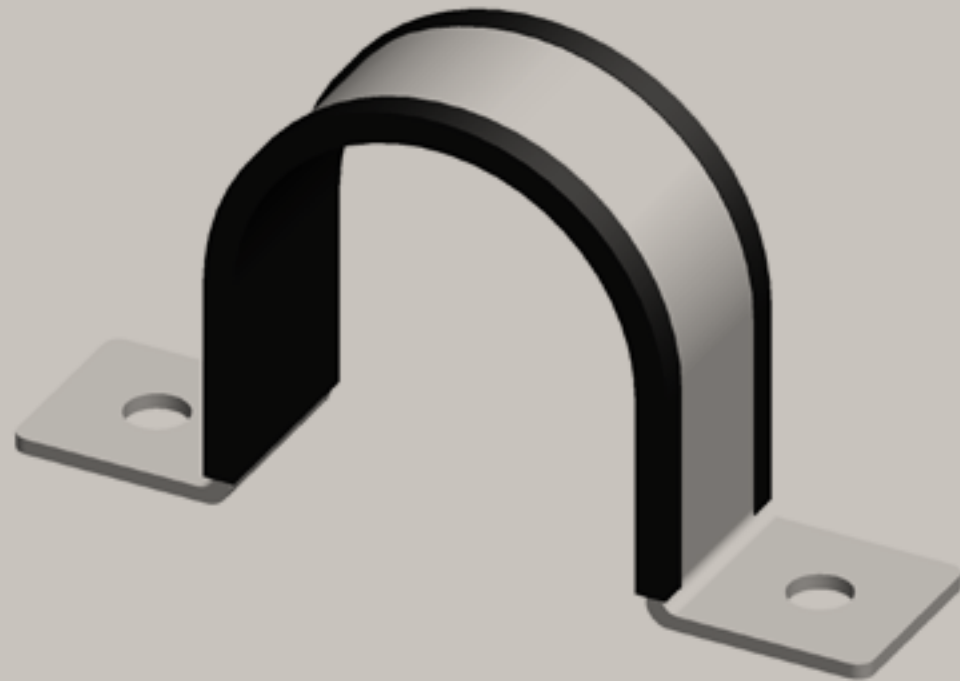
Part No.	D (mm)	D (")	Bolt	B (mm)	b x s (mm)	K (mm)	Fa,z (N)	Pack1
DM C18 8 022	22	1/2	M8	79	25 x 2	54	5,500	500
DM C18 8 028	28	3/4	M8	85	25 x 2	60	5,500	400
DM C18 8 035	35	1	M8	92	25 x 2	67	5,500	400
DM C18 8 040	42	1 1/4	M8	99	25 x 2	74	5,500	300
DM C18 8 048	48	1 1/2	M8	105	25 x 2	80	5,500	350
DM C18 8 054	54		M8	111	25 x 2	86	5,500	250
DM C18 8 060	60	2	M8	117	25 x 2	92	5,500	200
DM C18 8 067	67		M8	124	25 x 2	99	5,500	200
DM C18 8 075	75	2 1/2	M8	148	25 x 3	116	6,500	150
DM C18 8 082	82		M8	155	25 x 3	123	6,500	150
DM C18 8 090	90	3	M8	163	25 x 3	131	6,500	150
DM C18 8 100	100	3 1/2	M8	173	25 x 3	141	6,500	150
DM C18 8 108	108		M8	181	25 x 3	149	6,500	125
DM C18 8 115	115	4	M8	188	25 x 3	156	6,500	125
DM C18 8 126	126		M10	199	25 x 3	167	6,500	125
DM C18 8 140	140	5	M10	213	25 x 3	181	6,500	100
DM C18 8 148	148		M10	221	25 x 3	189	6,500	100
DM C18 8 155	155		M10	228	25 x 3	196	6,500	100
DM C18 8 168	168	6	M10	240	25 x 3	208	6,500	100
DM C18 8 179	179		M10	252	25 x 3	220	6,500	100
DM C18 8 190	190		M10	263	38 x 3	231	9,000	50
DM C18 8 205	205		M10	278	38 x 3	246	9,000	50
DM C18 8 219	219	8	M10	292	38 x 3	260	9,000	50
DM C18 8 230	230		M10	303	38 x 3	271	9,000	30



Hot Dip Galvanized, Stainless Steel, and Electrical Option available on request.



EPDM Lined U-Strap Clamp (M12-M18)



FEATURES & BENEFITS

For mounting plain or insulated pipes

Slotted holes on both sides for installation

Material: steel

Electro galvanized as per ASTM B 633

Standards (SC3), BS 1706 FE/ZN 12

temperature resistance from -20 °C

to +110 °C

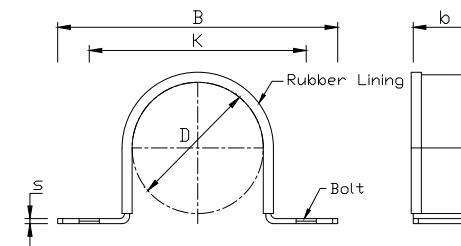
noise insulating lining, EPDM, black

noise reduction up to 18dB (A)

designed to meet MSS Standard SP-58, type 26 and SP-69

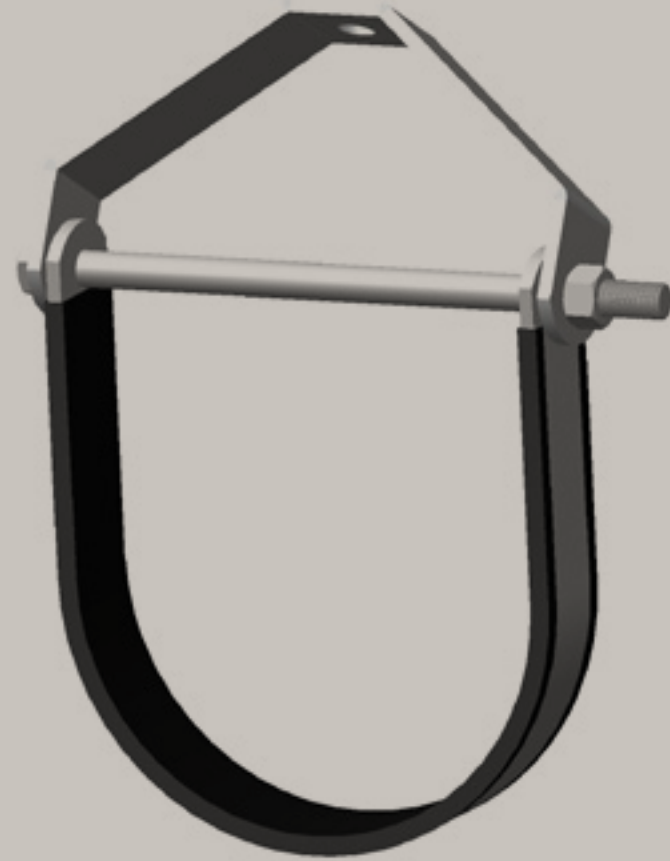
 **HARMONY**
SUPPLIER

Part No.	D (mm)	D (")	Bolt	B (mm)	b x s (mm)	K (mm)	Fa,z (N)	Pack1
DM C18 8 241	241		M12	335	38 x 4	294	13,500	35
DM C18 8 263	263		M12	357	38 x 4	316	13,500	35
DM C18 8 273	273	10	M18	367	38 x 4	326	13,500	35
DM C18 8 295	295		M18	389	38 x 4	348	13,500	30
DM C18 8 323	323	12	M18	417	38 x 4	376	13,500	30
DM C18 8 356	356	14	M18	450	50 x 4	409	19,000	10
DM C18 8 374	374		M18	468	50 x 4	427	19,000	15
DM C18 8 406	406	16	M18	500	50 x 4	459	19,000	15
DM C18 8 432	432		M18	526	50 x 4	485	19,000	15
DM C18 8 456	456	18	M18	550	50 x 4	509	19,000	10
DM C18 8 482	482		M18	576	50 x 4	535	19,000	10
DM C18 8 508	508	20	M18	602	50 x 4	561	19,000	10
DM C18 8 533	533		M18	627	50 x 4	586	19,000	10
DM C18 8 559	559		M18	653	50 x 4	612	19,000	10
DM C18 8 583	583		M18	677	50 x 4	636	19,000	10
DM C18 8 610	610	24	M18	704	60 x 4	663	19,000	10
DM C18 8 658	658		M18	769	50 x 6	721	24,000	5
DM C18 8 690	690		M18	801	50 x 6	753	24,000	5
DM C18 8 760	760		M18	870	50 x 6	823	24,000	5
DM C18 8 863	863		M18	947	50 x 6	926	24,000	5
DM C18 8 918	918		M18	1,029	50 x 6	981	24,000	5



Hot Dip Galvanized, Stainless Steel, and Electrical Option available on request.
With connection nut M8/M10, M10/M12 available on request.
With M6 Side Nuts available on request.

EPDM Lined Clevis Hanger



FEATURES & BENEFITS

Electrogalvanized as per ASTM B 633

Standards (SC3), BS 1706 FE/ZN 12

Temperature resistance from -20 °C to +110 °C

Noise insulating lining, EPDM, black

Noise reduction up to 18dB (A)

Designed to meet MSS Standard SP-58, type

1 and SP-69

Material: steel

Designed for chilled water pipe work &

firefighting systems

Design permits vertical adjustment of pipe

after installation

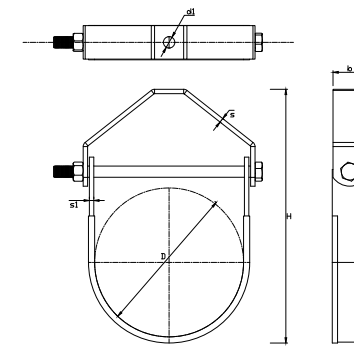
Hanger load nut above clevis must be

tightened securely to ensure proper hanger

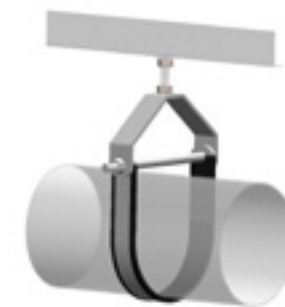
performance



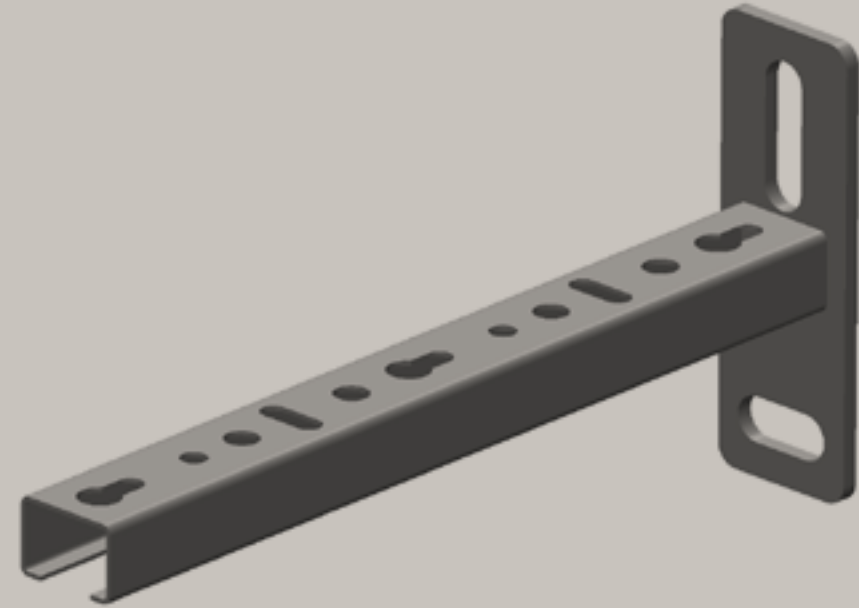
Part No.	D (mm)	D (")	G	H (mm)	b (mm)	s (mm)	s1 (mm)	d1 (mm)	Faz Appr. (N)	Pack1
DM C22 2 022	22	1/2	M8 x 60mm	73	25	3	3	10	4,000 FM, UL	125 *
DM C22 2 028	28	3/4	M8 x 68mm	79	25	3	3	10	4,000 FM, UL	125 *
DM C22 2 035	35	1	M8 x 78mm	85	25	3	3	10	4,000 FM, UL	125 *
DM C22 2 040	42	1 1/4	M8 x 82mm	95	25	3	3	10	4,000 FM, UL	125 *
DM C22 2 048	48	1 1/2	M8 x 88mm	103	25	3	3	10	4,000 FM, UL	100 *
DM C22 2 060	60	2	M10 x 110mm	120	25	3	3	10	4,000 FM, UL	75 *
DM C22 2 075	73	2 1/2	M10 x 125mm	149	25	4	4	10	6,5000 FM, UL	60 *
DM C22 2 090	89	3	M10 x 140mm	176	25	4	4	10	6,5000 FM, UL	50 *
DM C22 2 100	105	3 1/2	M10 x 155mm	176	25	4	4	10	6,5000 FM, UL	40 *
DM C22 2 115	115	4	M10 x 170mm	201	32	6	6	10	8,000 FM, UL	20 *
DM C22 2 140	140	5	M12 x 195mm	235	32	6	6	12	8,000 FM, UL	15 *
DM C22 2 168	168	6	M12 x 225mm	269	40	6	5	12	11,000 FM, UL	10 *
DM C22 2 219	219	8	M12 x 275mm	341	40	6	5	12	11,000 FM, UL	15 *
DM C22 2 273	273	10	M16 x 360mm	422	40	6	6	16	11,000 FM, UL	10
DM C22 2 323	323	12	M20 x 420mm	493	50	9	6	20	15,000 FM, UL	6
DM C22 2 355	355	14	M20 x 455mm	559	50	9	6	20	15,000 FM, UL	6
DM C22 2 406	613	16	M24 x 510mm	613	65	12	6	24	17,000 FM, UL	3
DM C22 2 457	457	18	M24 x 555mm	678	65	12	6	24	17,000 FM, UL	3
DM C22 2 508	508	20	M24 x 610mm	718	75	12	9	30	22,000 FM, UL	2
DM C22 2 610	610	24	M24 x 710mm	853	75	16	9	30	27,000 FM, UL	2
DM C22 2 755	755	30	M24 x 890mm	998	75	19	9	30	30,000 FM, UL	1



Hot Dip Galvanized Steel and Stainless-Steel option Available on Request.
Custom made Clevis Hanger are available on request.



BIS RapidRail Cantiliver Arms(BUP1000)



FEATURES & BENEFITS

Wall plate with welded C-profile

Perfectly suitable for hanging to the ceiling

Slots at 90° to each other to simplify fixing

CO2 welded - Material: steel

Unique perforation on rail WM15, WM30 and rail WM35 allows for hanging on both sides

Allowed load (Fa, z) check loading tables

A continuous graduated centimeter scale on one side

Product is part of the BIS Ultra Protect® 1000 system

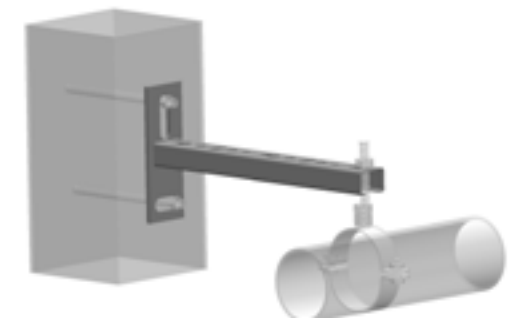
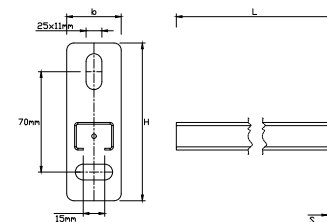
Suitable for in- and outdoor applications

Stands min. 1.000 hours salt spray test

(max. 5% red rust) according to ISO 9227

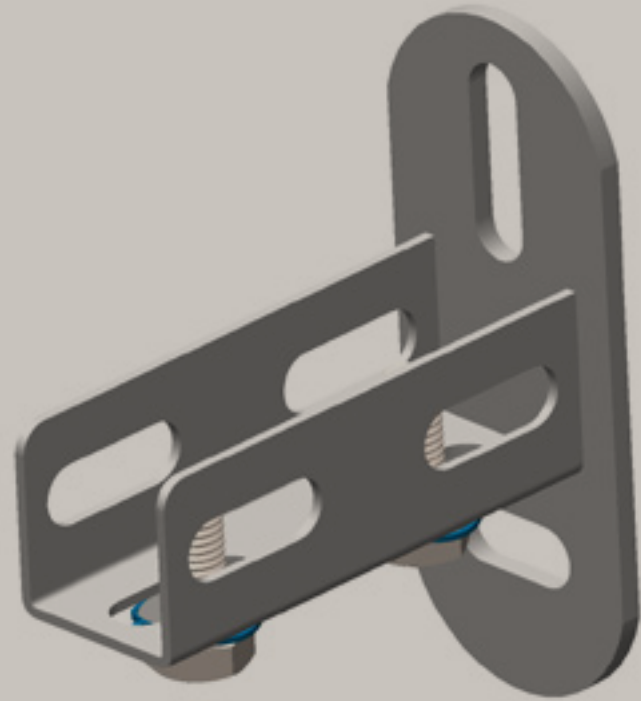


Part No.	L (mm)	H	From Rail b x s (mm)	Pack 1
660 3 015 150 mm	110	WMO-27 x 18	38 x 4	20
660 3 019 200 mm	110	WMO-27 x 18	38 x 4	60



Hot Dip Galvanized, Stainless Steel, and Electrical Option available on request.
With connection nut M8/M10, M10/M12 available on request.
With M6 Side Nuts available on request.

BIS RapidRail Wall Plates



FEATURES & BENEFITS

U-profile welded on wall plate

For wall fixing of rail

Rail can be fixed with slot downwards or sideways

Part No. 661 3 200: for WM0, 1, 15, 2, 30

Part No. 661 3 235: suitable for WM35

Zinc plated - CO2 welded

Slots at 90° to to simplify fixing

pre-assembled BIS RapidRail® Sliding

nut(s) for a quick fixing, & retains assembly in place before final tightening

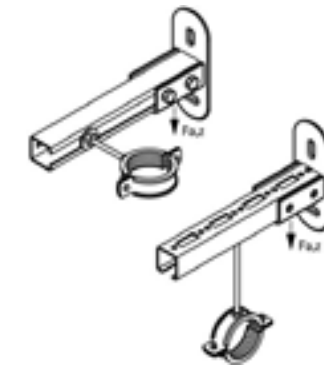
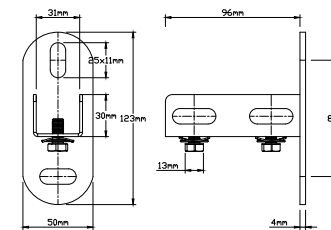
Material: metal parts made of steel

1.0332; spring(s) made of POM

(polyoxymethylene), green



Part No.	From Rail (mm)	T	Pack 1
661 3 200	WMO-30	15	25
661 3 235	WMO-35	15	25



Hot Dip Galvanized, Stainless Steel, and Electrical Option available on request.
With connection nut M8/M10, M10/M12 available on request.
With M6 Side Nuts available on request.

BIS Strut Clamps With Lining

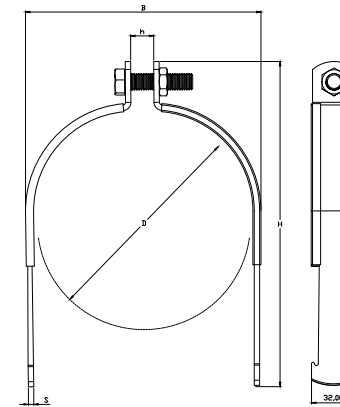


FEATURES & BENEFITS

- Two-part clamp
- For direct fixing of pipes to Strut Rail
- Both ends suitable for locating into Strut Rail
- Sound insulating lining according DIN 4109
- Material: steel 1.0226
- Pre-galvanized
- Noise insulating lining, EPDM rubber,
- black

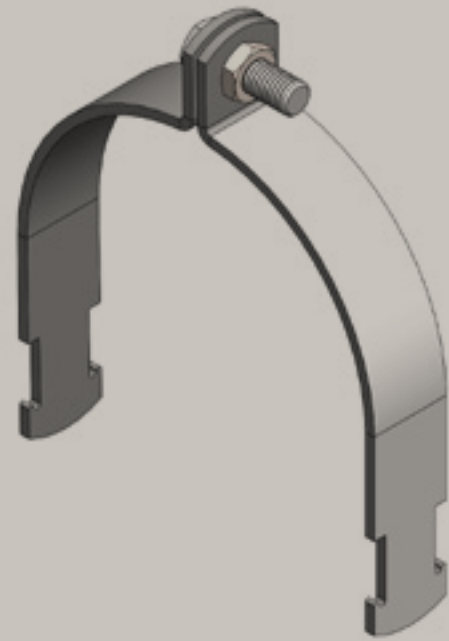


Part No.	D (mm)	D (")	DN (mm)	B (mm)	H (mm)	h (mm)	s (mm)	SW1 (mm)	Pack 1
210 5 090	85-90	3	80	98	134	12	2,0	13	50
210 5 110	105-110	-	-	117	159	17	2,5	17	50
210 5 140	130-140	5	125	147	189	17	2,5	17	25
210 5 160	150-160	-	-	165	210	17	3,0	17	25
210 5 200	190-200	-	-	208	244	17	3,0	17	25
210 5 225	215-225	8	200	233	276	17	3,0	17	25
210 5 250	240-250	-	-	258	301	17	3,0	17	25
210 5 315	315			323	366	17	3,0	17	25



Hot Dip Galvanized, Stainless Steel, and Electrical Option available on request.
With connection nut M8/M10, M10/M12 available on request.
With M6 Side Nuts available on request.

BIS Strut Clamps



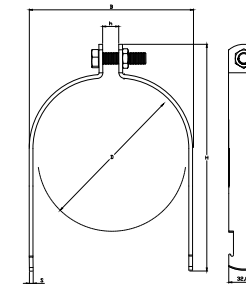
FEATURES & BENEFITS

- Two-part clamp
- For direct fixing of pipes to Strut Rail
- Pre-galvanized
- Both ends suitable for locating into Strut Rail
- Material: steel 1.0226

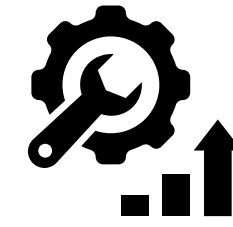


Part No.	D (mm)	D (")	DN (mm)	B (mm)	H (mm)	h (mm)	s (mm)	SW1 (mm)	Pack1
200 5 010	9_10	-	-	13	47	5,0	1,5	10	100
200 5 012	10_12	1\8	6	15	49	5,0	1,5	10	100
200 5 014	12_14	1\4	8	17	51	5,0	1,5	10	100
200 5 016	14_16	-	-	19	53	5,0	1,5	10	100
200 5 018	16_18	3\8	10	21	55	7,5	1,5	10	100
200 5 022	20_22	1\2	15	25	58	10,0	1,5	10	100
200 5 026	22_26	-	-	29	62	10,0	1,5	10	100
200 5 030	26_30	3\4	20	33	67	10,0	1,5	10	100
200 5 035	30_35	1	25	38	72	10,0	1,5	10	100
200 5 040	35_40	-	-	43	77	10,0	1,5	10	100
200 5 045	40_45	1\4	32	48	82	10,0	1,5	10	100
200 5 050	45_50	1\2	40	54	88	10,0	2,0	13	100
200 5 055	50_55	-	-	59	93	10,0	2,0	13	100
200 5 060	55_60	-	-	64	98	10,0	2,0	13	100
200 5 065	60_65	2	50	69	103	10,0	2,0	13	100
200 5 070	65_70	-	-	74	108	10,0	2,0	13	100
200 5 075	70_75	-	-	79	113	10,0	2,0	13	50
200 5 080	75_80	2\1\2	65	84	118	10,0	2,0	13	50
200 5 085	80_85	-	-	89	123	10,0	2,0	13	50
200 5 090	85_90	3	80	94	128	10,0	2,0	13	50
200 5 095	90_95	-	-	99	133	10,0	2,0	13	50
200 5 100	95_100	-	-	104	138	10,0	2,0	13	50
200 5 105	100_105	-	-	110	148	15,0	2,5	17	50
200 5 110	105_110	-	-	115	153	15,0	2,5	17	50
200 5 120	110_120	4	100	125	163	15,0	2,5	17	50
200 5 130	120_130	-	-	135	173	15,0	2,5	17	25
200 5 140	130_140	5	125	145	183	15,0	2,5	17	25
200 5 150	140_150	-	-	155	193	15,0	2,5	17	25
200 5 160	150_160	-	-	166	204	15,0	3,0	17	25
200 5 170	160_170	6	150	176	214	15,0	3,0	17	25
200 5 200	190_200	-	-	206	244	15,0	3,0	17	25
200 5 225	215_225	0	8	200	231	269	15,0	3,0	17/25
200 5 250	240_250	-	-	256	294	15,0	3,0	17	25

Hot Dip Galvanized, Stainless Steel, and Electrical Option available on request.
 With connection nut M8/M10, M10/M12 available on request.
 With M6 Side Nuts available on request.



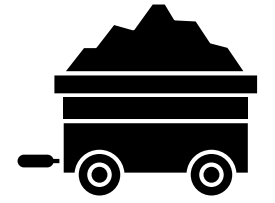
OUR PRODUCTION ARM



Leading
Manufacturer And
Fabricator



Region
Exposure



100%
Raw Material

0.5

Harmony Manufacturing is a leading manufacturer and fabricator of light steel construction products in the region, servicing the construction sector.

Products of Harmony Manufacturing are manufactured from quality raw material according to the relevant international standards to meet all kinds of construction projects requirements.



Health And Safty

The Factory Management regard the health and safety of the employees, clients and all others that may be affected by their operations to be of a major importance.

In support of this, the management promotes health and safety throughout the factory's operations and endeavor to engender a positive attitude in all employees towards the prevention of accidents and maintenance of healthy working arrangements.



The Factory satisfies the requirements of the Health, Safety and related legislation by setting out the responsibilities of all levels of staff and the arrangements for carrying out those responsibilities and in particular do what is reasonably practicable to:

1. Maintains safe & healthy working conditions.
2. Ensures that all facilities and equipment are safe and properly maintained.
3. Provides products that can be applied and used safely and without risk to health.
4. Provides and maintain working procedures, that are safe and without risk to health, throughout the its operations in respect of: The use, handling, storage, transports and disposal of materials and substances, The use of factory equipment , Potential emergency situations, including first aid & fire and escape of substances.
5. Ensure the competence of employees by keeping trained and up tp date with the latest in the industry both technically and in terms of safety.

Social Responsibility

Being socially responsible is a part of who we are and how we do our business. We aim to provide useful products and services, to provide jobs and development opportunities for our communities, and satisfaction through meaningful work.

We make a difference by acting on the values and principles of our societies and we inspire others to do at Harmony, we anticipate and reduce threats caused by environmental changes or natural disasters, and we are well adapted to significant social changes. We contribute to a more sustainable society by means of value and support to our consumers & our supply chains.



WE ARE KEEN TO IDENTIFY WAYS THEY CAN IMPROVE OUR IMPACTS ON THE PEOPLE AND PLACES WE WORK.

- Organizational governance: We promote accountability and transparency at all levels.
- Human care: We treat individuals with respect; and make efforts to help members of vulnerable groups.
- Labor practices: We provide just, safe and favorable conditions to workers
- Environment: At Harmony, we identify and improve environmental impacts of our operations, including the resource use of natural resources and waste disposal.

At Harmony, we are committed to continuous improvement ongoing learning, process review and innovative thinking that foster new initiatives; and better practices.

Our environmental programs evolve to meet today's changing needs while protecting resources for future generations.

CONTACT INFORMATION

www.harmony-egy.com
info@harmony-egy.com

Plot 230, Third Industrial Zone, 6th of October, Giza, Egypt
المنطقة الصناعية الثالثة، القطعة ٢٣٠، مدينة 6 أكتوبر، الجيزة، مصر

+2 0111 521 3111
+2 0121 0 11 2633